



INDUSTRIAL PROCESS AND
COMMERCIAL VENTILATION SYSTEMS



LABORATORY & FUME EXHAUST SYSTEMS
MIXED FLOW & CENTRIFUGAL FANS



WWW.TCF.COM



Fume Hood Exhaust

Standard Features (all models):

- 125 mph wind-load rating (without the need for guy wires)
- Stainless steel hardware
- 2.0 SF on all belt drive fans
- High velocity nozzles
- Efficient design
- Quality construction

Common Accessories (all models):

- Heavy gauge single wall mixing plenum boxes with modular construction
- Double wall, insulated mixing plenum boxes with modular construction
- Heavy duty dampers
- Actuators
- Jib cranes
- Special coatings
- Special materials
- Acoustic attenuated windbands
- Heavy gauge roof curbs
- AMCA spark resistant construction



**AMCA 260
TESTED**

TVIFE
**Mixed Flow,
Induced Flow**
(Patent Pending)

The TVIFE is an arrangement 4, direct drive, induced flow fan that utilizes a mixed flow wheel. The TVIFE housing uses an innovative Turbo-Vane™ design that integrates the internal nozzle and straightening vanes into one. Turbo-Vanes™ induce air within the fan housing as well as the windband, giving the best entrainment and efficiency in the industry. The design also allows for uniform motor cooling, while keeping the motor out of the airstream. Sizes are available from 12.5" up to 66" and capable of handling over 80,000 cfm. Twin City Fan & Blower model TVIFE is tested and certified in accordance with AMCA 260 (induced flow) for air and sound.



**AMCA 260
TESTED**

BAIFE / BCIFE
**Centrifugal
Induced Flow**

The BAIFE utilizes a highly efficient airfoil bladed centrifugal wheel and is tested and certified in accordance with AMCA 260 (induced flow) for air and sound. Available in arrangements 1, 4, 8, 9 and 10.

The BCIFE utilizes a backward inclined centrifugal wheel and is intended for high moisture and high temperature applications. The BCIFE is tested in accordance with AMCA 260 (induced flow) for air and sound. Available in arrangements 1, 4, 8, 9 and 10.



**AMCA 260
TESTED**

QIFE Mixed Flow, Induced Flow

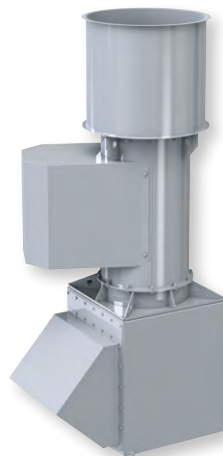


The model QIFE is an arrangement 9 belt driven induced flow fan utilizing a mixed flow wheel. Sizes are available from 12.5" up to 66" and capable of handling over 75,000 CFM.

The nozzle on the QIFE has a built-in drain pan to reduce potential rain entry into the building when the fan is not running. Twin City Fan & Blower model QIFE is tested and certified in accordance with AMCA 260 (induced flow) for air and sound.



QFE / TFE Mixed & Inline Centrifugal



The TFE is an arrangement 9 belt driven inline centrifugal fan that utilizes a high velocity discharge nozzle to achieve a high plume height. The TFE offers a gravity damper at the fan outlet for full positive shut-off when the fan is not in use, which prevents rain from entering the building.

The QFE is similar in design, but incorporates a high efficiency mixed flow wheel design.



Common Uses (Fume Exhaust Fans)

- **Universities**
- **Schools**
- **Hospitals**
- **Research Facilities**
- **Laboratories**
- **Restaurants**
- **Waste Water Treatment Plants**

Twin City Fan & Blower can also offer fume exhaust fans for special and industrial applications using specialized versions of the following models as well:

- RBO - Radial Bladed Fans**
- RBA - Radial Bladed Fans**
- RBR - Radial Bladed Fans**
- JRW - Radial Bladed Fans**
- CIW - Pressure Blowers**
- TPB - Pressure Blowers**
- TPD - Pressure Blowers**





INDUSTRIAL PROCESS AND COMMERCIAL VENTILATION SYSTEMS

CENTRIFUGAL FANS | UTILITY SETS | PLENUM & PLUG FANS | INLINE CENTRIFUGAL FANS
MIXED FLOW FANS | TUBEAXIAL & VANEAXIAL FANS | PROPELLER WALL FANS | PROPELLER ROOF VENTILATORS
CENTRIFUGAL ROOF & WALL EXHAUSTERS | CEILING VENTILATORS | GRAVITY VENTILATORS | DUCT BLOWERS
RADIAL BLADED FANS | RADIAL TIP FANS | HIGH EFFICIENCY INDUSTRIAL FANS | PRESSURE BLOWERS
LABORATORY EXHAUST FANS | FILTERED SUPPLY FANS | MANCOOLERS | FIBERGLASS FANS | CUSTOM FANS



TWIN CITY FAN & BLOWER
WWW.TCF.COM

5959 TRENTON LANE N. | MINNEAPOLIS, MN 55442 | PHONE: 763-551-7600 | FAX: 763-551-7601

©2018 Twin City Fan Companies, Ltd., Minneapolis, MN. All rights reserved. Catalog illustrations cover the general appearance of Twin City Fan & Blower products at the time of publication and we reserve the right to make changes in design and construction at any time without notice.