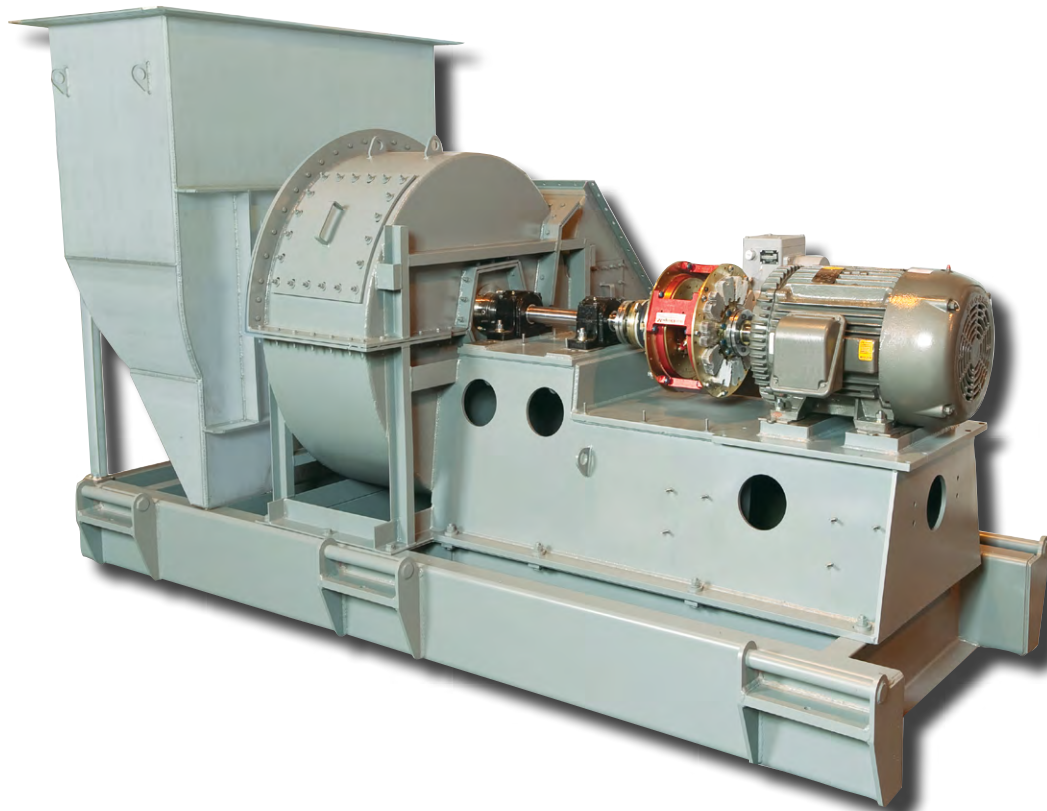




INDUSTRIAL PROCESS AND  
COMMERCIAL VENTILATION SYSTEMS

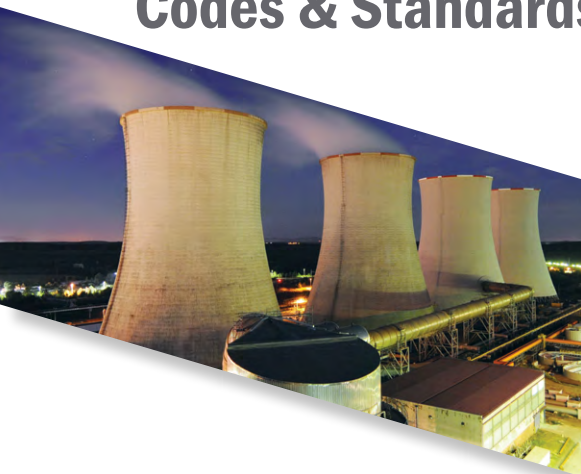


**NUCLEAR FACILITIES**  
NQA-1 COMPLIANT AIR MOVING EQUIPMENT



[WWW.TCF.COM](http://WWW.TCF.COM)

## Applicable Nuclear Codes & Standards



### **ASME NQA-1**

Quality Assurance Requirements for Nuclear Facility Applications

### **ASME AG-1**

Code on Nuclear Air & Gas Treatment

### **ASME BPVC**

Section IX Boiler & Pressure Vessel Code

### **API 673**

Centrifugal Fans for Petroleum, Chemical & Gas Industry

### **AMCA 201**

Fans and Systems

### **AMCA 210**

Laboratory Methods of Testing Fans for Rating

### **AMCA 300**

Reverberant Room Method for Fan Sound Testing

### **AWS D1.1/D1.M/1.3/1.6/14.6**

Structural Welding Code

### **AWS D9.1M**

Sheet Metal Welding Code

### **NEMA MG1**

Motors

### **10 CFR PART 50 APPENDIX B**

Quality Assurance for Nuclear Power & Fuel Processing Plants

### **10 CFR PART 21**

Reporting of Defects & Noncompliance

### **ASNT-TC-1A**

Inspection

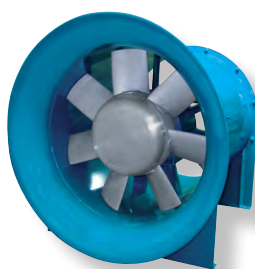
## Nuclear Market Fan Applications

The nuclear industry utilizes fans in many different areas. Each application requires a customized fan that is specifically designed to optimize durability, dependability, safety and ease of maintenance. Some of these applications include:

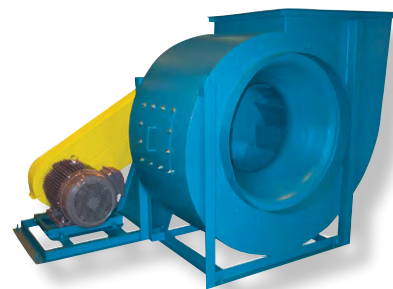
- Motor/Turbine Cooling
- Nuclear Processing/Refining Facilities
- Reactor Cooling
- Hot Cell Pressurization
- Battery Room Ventilation (ATEX)
- Exhaust & Supply
- HVAC (General Ventilation & Air Handling Units)
- Various Safety Systems

## Validation & Testing

Every fan that we manufacture for the nuclear market undergoes a rigorous testing and validation process to meet the industry requirements for vibration, air and sound performance. In addition, Twin City Fan & Blower tests all fans for structural and mechanical integrity. Our capabilities allow us to perform our testing in our AMCA 210 certified laboratory as well as our nuclear fan manufacturing facility.



**Model TCVX**  
Adjustable Blade Vaneaxial Fan



**Model BCS**  
Backward Curved High Volume/Pressure Fan

## Special Requirements for Nuclear Applications

Twin City Fan & Blower has been supplying air moving equipment for nuclear applications for over 30 years. Our dedicated nuclear staff has the knowledge and expertise to ensure compliance with the most stringent industry requirements. We take great pride in offering our customers special customization and construction features required to meet industry standards.

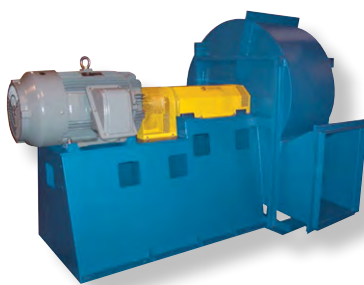
- **Stainless steel materials**
- **Fabricating per ASME AG1 construction requirements**
- **Welding per AWS and ASME IX requirements**
- **Custom machining**

## Quality Assurance

We pay special attention to the implementation and verification of our procedures to fully support the nuclear application requirements. This process allows us to record and verify each step of the manufacturing process and provide our customers with the highest quality products.

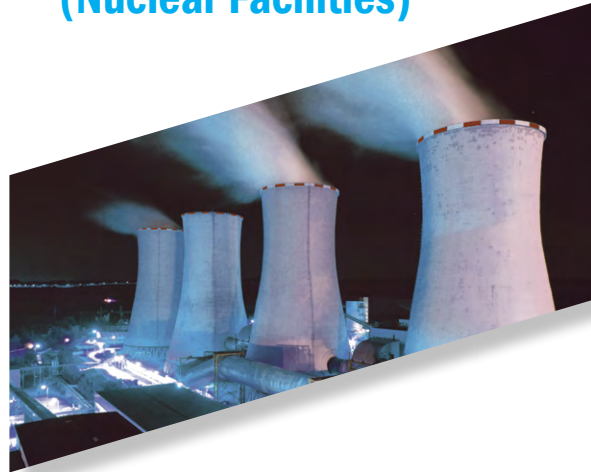


**Model RBA**  
Industrial Radial Bladed Fan



**Model HIB**  
High Efficiency Industrial Backward Curved Fan

## Common Products (Nuclear Facilities)



**BC** - Flat-Blade Backward Inclined Centrifugal Fan

**BAE** - Airfoil Centrifugal Fan

**BCS** - Backward Curved High Volume/ Pressure Centrifugal Fan

**RBA** - Industrial Radial Blade Fan

**TBNA** - Turbo Pressure Blower

**HIB** - High Efficiency Industrial Backward Curved Fan

**MBO** - Heavy Duty Pressure Blower

**MBR** - Heavy Duty Pressure Blower, High Pressure Air Handling

**BCN** - Backward Curved Pressure Blowers

**TCVX** - Adjustable Blade Vaneaxial Fans

**DCRU** - Upblast Roof Exhausters







# INDUSTRIAL PROCESS AND COMMERCIAL VENTILATION SYSTEMS

CENTRIFUGAL FANS | UTILITY SETS | PLENUM & PLUG FANS | INLINE CENTRIFUGAL FANS  
MIXED FLOW FANS | TUBEAXIAL & VANEAXIAL FANS | PROPELLER WALL FANS | PROPELLER ROOF VENTILATORS  
CENTRIFUGAL ROOF & WALL EXHAUSTERS | CEILING VENTILATORS | GRAVITY VENTILATORS | DUCT BLOWERS  
RADIAL BLADED FANS | RADIAL TIP FANS | HIGH EFFICIENCY INDUSTRIAL FANS | PRESSURE BLOWERS  
LABORATORY EXHAUST FANS | FILTERED SUPPLY FANS | MANCOOLERS | FIBERGLASS FANS | CUSTOM FANS



**TWIN CITY FAN & BLOWER**  
**[WWW.TCF.COM](http://WWW.TCF.COM)**

5959 TRENTON LANE N | MINNEAPOLIS, MN 55442 | PHONE: 763-551-7600 | FAX: 763-551-7601

©2018 Twin City Fan Companies, Ltd., Minneapolis, MN. All rights reserved. Catalog illustrations cover the general appearance of Twin City Fan & Blower products at the time of publication and we reserve the right to make changes in design and construction at any time without notice.