



INDUSTRIAL PROCESS AND
COMMERCIAL VENTILATION SYSTEMS

PROPELLER ROOF VENTILATORS LOW PROFILE UPBLAST

LUD/LUB | LUBMO | LUBSH

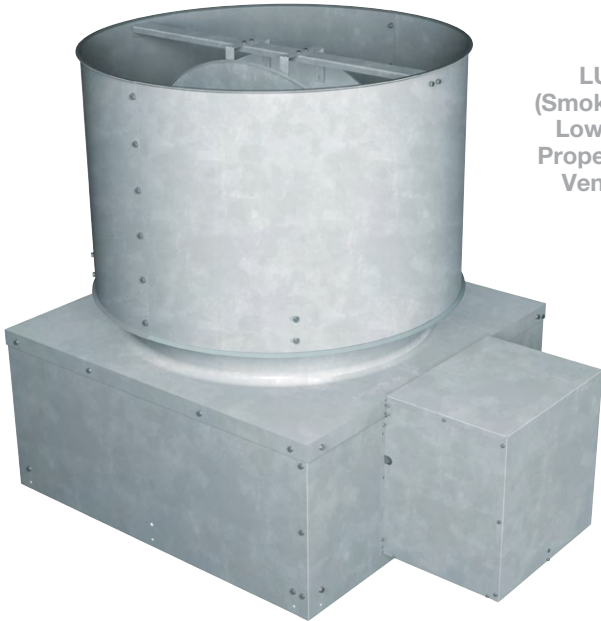


PROPELLER ROOF VENTILATORS



Overview

LUD | LUB | LUBMO | LUBSH



LUBSH
(Smoke & Heat
Low Profile
Propeller Roof
Ventilator)

Twin City Fan & Blower's line of Low Profile Upblast Propeller Roof Ventilators provide general exhaust of commercial and light industrial buildings while offering a pleasing low profile design that minimizes extension above the roof line. The upblast design discharges air and contaminants up and away from the building. These ventilators exhaust large volumes of air at low to medium static pressures. Typical applications for upblast propeller roof ventilators include warehouses, shopping centers and manufacturing facilities.

A wide array of fixed pitch, fabricated steel or adjustable pitch, cast aluminum propellers are available to meet specific performances and application requirements. The cost effective design is available in both belt and direct drive configurations. Application flexibility, cost competitiveness and robust design all combine to make Twin City Fan & Blower's LU Series of Low Profile Upblast Propeller Roof Ventilators an industry leader.

Typical Industries Include

Warehouse Ventilation, Office Ventilation, General HVAC, Gymnasium Ventilation, Factory Ventilation, Greenhouse Ventilation, Attic Exhaust, Hospital Exhaust, Agriculture, Manufacturing Exhaust, Paper Mills, Foundry, Textile, Commercial Plan & Spec, Office Ventilation

Configurations

Upblast

Propeller Types

"L1" and "L2" Fabricated Steel Propellers; "B" and "E" Die Cast Aluminum Propellers; "C" Cast Aluminum Propellers; "Z" Fabricated Steel Propellers

Standard Construction

Heavy-Gauge Galvanized Steel

Optional Construction

Special Coatings, Aluminum Construction, UL 705, UL 762, UL Smoke & Heat

Certifications

UL 705 Listed for Electrical, UL Listed for Smoke Control Systems



For complete product performance, drawings and available accessories, download our Fan Selector program at tcf.com.



Models LUD, LUB & LUBMO are UL/cUL 705 listed, for electrical, File No. E158680. Model LUBSH is UL/cUL listed for Smoke Control Systems as standard, File No. MH29313, 500°F for 4 hours and 1000°F for 1 hour.

PROPELLER ROOF VENTILATORS

Overview

LUD | LUB | LUBMO | LUBSH

Upblast

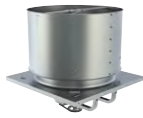
LUD (Direct Drive)

14" to 48" wheel diameters
Airflow to 34,500 CFM
Static pressure to 1" w.g.



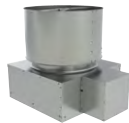
LUB (Belt Driven)

21" to 60" wheel diameters
Airflow to 60,800 CFM
Static pressure to 1" w.g.



LUBMO (Belt Driven)

21" to 60" wheel diameters
Airflow to 59,800 CFM
Static pressure to 1" w.g.



Smoke & Heat Removal

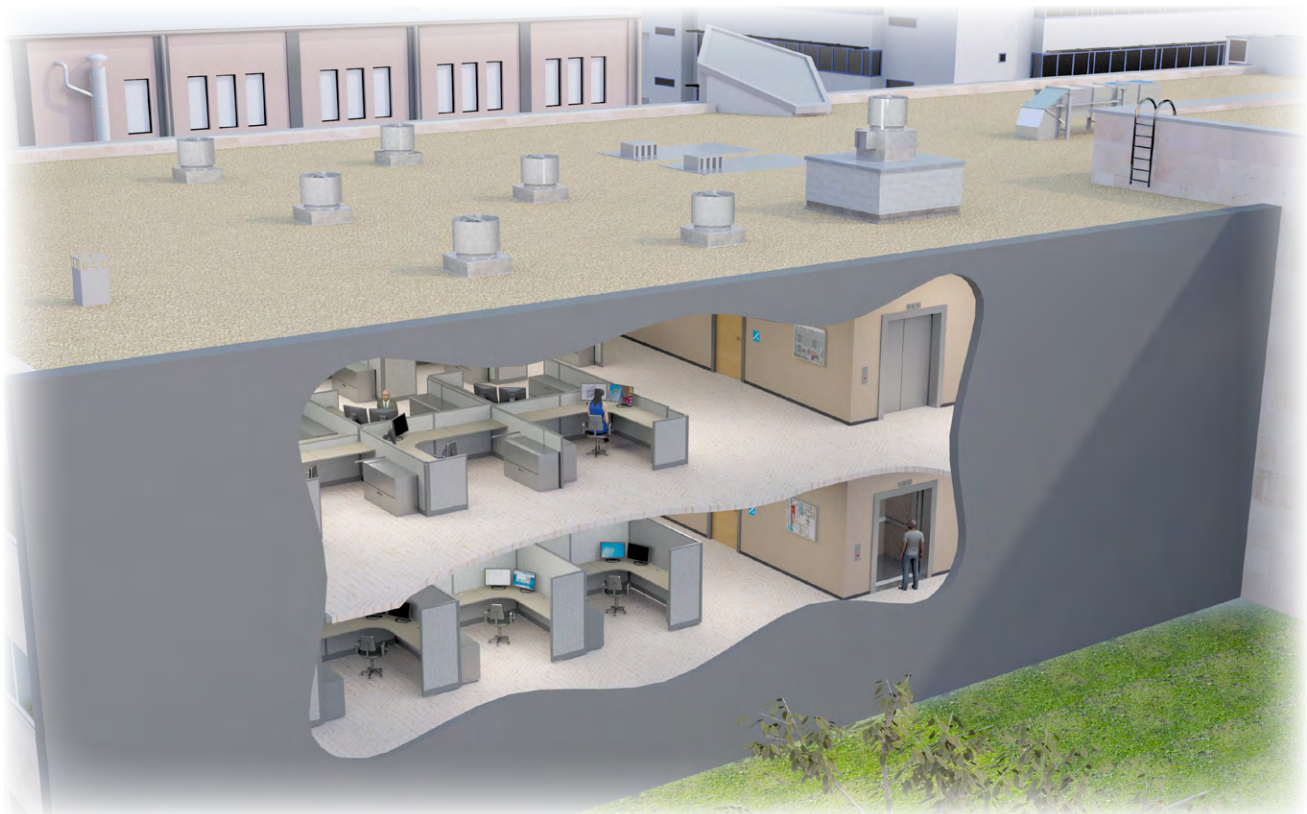
LUBSH (Belt Driven)

21" to 60" wheel diameters
Airflow to 59,800 CFM
Static pressure to 1" w.g.



Temperature Rating

500°F for 4 Hours
1000°F for 1 Hour



General HVAC (Supply and Exhaust)
Emergency Smoke Control (Elevator Shaft Exhaust)



Models

LUD | LUB | LUBMO | LUBSH



Model LUD

LUD

Upblast direct drive model LUD is available for general-purpose exhaust. Direct drive fans are an ideal choice for installations where service and maintenance are made difficult due to limited access. The LUD can save on service costs incurred through sheave, belt and bearing maintenance.

LUB

Standard duty upblast belt driven model LUB is available for use in clean air applications requiring the adjustable performance of a belt drive fan. Motor and drives are located below the fan, inside the roof curb for access from inside the building.

LUBMO

The belt driven LUBMO offers the same performance flexibility as the LUB, but with the motor located out of the airstream for easy inspection and service from the roof. The motor cover is easily removable making the motor and drive components accessible without moving the fan.

LUBSH

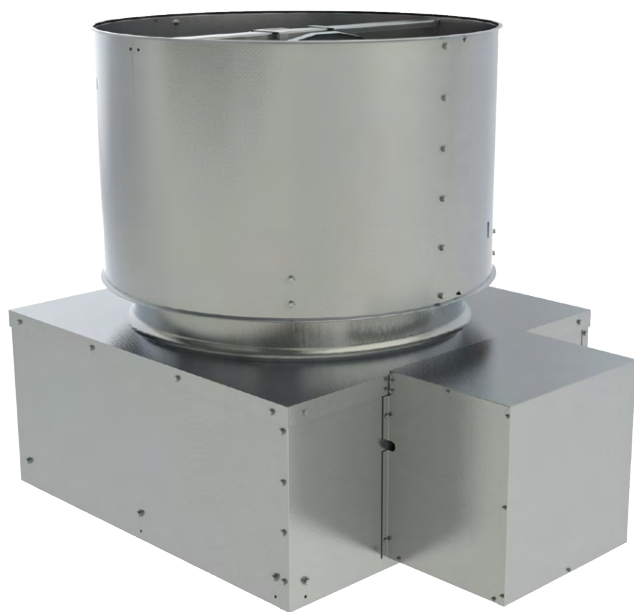
The LUBSH is specifically designed for smoke control applications. It is belt driven with the motor located remotely out of the airstream and the bearings and drive components protected from the elevated temperatures of the airstream. It is certified to carry the UL/cUL listing for smoke control systems and was tested for 500°F for 4 hours or 1000°F for 1 hour.

Sizes (wheel diameters)

14 to 60 inches (355 mm to 1,524 mm)

Performance

Airflow to 60,800 CFM (103,299 m³/hour)
Static pressure to 1 inch w.g. (248 Pa)






Model LUBSH








Models

LUD | LUB | LUBMO | LUBSH

Direct Drive

PROPELLERS	LEVEL	PROPELLER CONSTRUCTION	MODEL	SIZE RANGE	PERFORMANCE RANGE	PERFORMANCE DATA LOCTION
	3	Die cast aluminum blades and hubs. Blades angles are factory set, but can be field adjusted.	LUD	14"-48"	1,900 to 34,600 CFM, Static pressure up to 0.75" w.g.	Pages 13-15
	3	Die cast aluminum blades and hubs. Blades angles are factory set, but can be field adjusted.	LUD	14"-48"	1,600 to 27,800 CFM, Static pressure up to 1.00" w.g.	Pages 13-15
	3	Fixed pitch steel blades welded to a steel hub.	LUD	24"-48"	4,400 to 31,400 CFM, Static pressure up to 1.00" w.g.	Pages 14-15

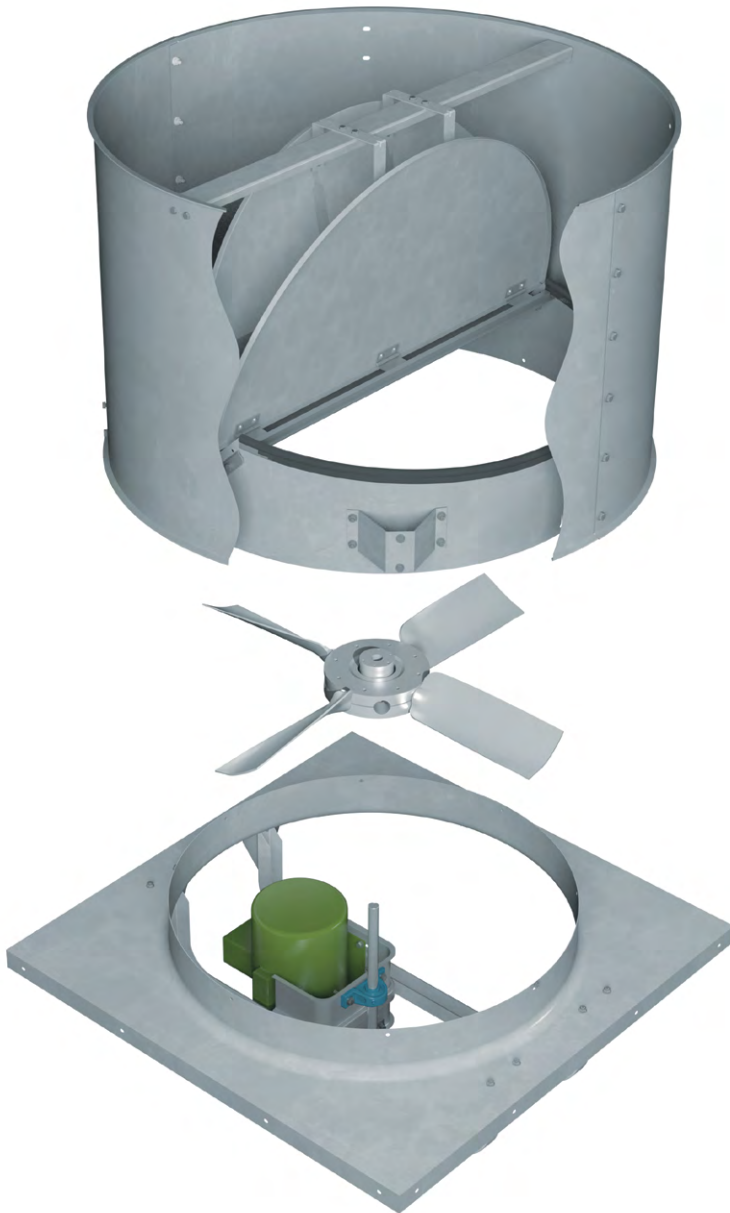
Belt Driven

PROPELLERS	LEVEL	PROPELLER CONSTRUCTION	MODELS	SIZE RANGE	PERFORMANCE RANGE	PERFORMANCE DATA LOCTION
	1	Fixed pitch galvanized steel blades riveted to galvanized hubs.	LUB/ LUBMO/ LUBSH	21"-60"	4,100 to 35,000 CFM, Static pressure up to 0.375" w.g.	Pages 16-26 (LUB) Pages 27-37 (LUBSH/LUBMO)
	2	Reinforced fixed pitch galvanized steel blades riveted to galvanized hubs.	LUB/ LUBMO/ LUBSH	21"-60"	5,100 to 47,700 CFM, Static pressure up to 0.75" w.g.	Pages 16-26 (LUB) Pages 27-37 (LUBSH/LUBMO)
	3	Die cast aluminum blades and hubs. Blades angles are factory set, but can be field adjusted.	LUB/ LUBMO	21"-60"	3,900 to 54,500 CFM, Static pressure up to 1.00" w.g.	Pages 16-26 (LUB) Pages 27-37 (LUBMO only)
	3	Die cast aluminum blades and hubs. Blades angles are factory set, but can be field adjusted.	LUB/ LUBMO	21"-60"	4,100 to 55,000 CFM, Static pressure up to 1.00" w.g.	Pages 16-26 (LUB) Pages 27-37 (LUBMO only)
	3	Fixed pitch steel blades welded to a steel hub.	LUB/ LUBMO/ LUBSH	24"-60"	5,100 to 60,800 CFM, Static pressure up to 1.00" w.g.	Pages 17-26 (LUB) Pages 28-37 (LUBSH/LUBMO)



Exploded View

LUD | LUB



Windband

Constructed of heavy gauge galvanized steel with bolted seams. Reinforcing flange provides rigidity, strength and safe handling. The windband is removable with four bolts, allowing access to the fan through the damper blades.

Butterfly Dampers

Blades constructed of steel as standard, unless the outlet velocity of the fan is below the minimum required to open steel damper blades, then aluminum blades shall be provided. Damper blades on all sizes of model LUBSH are galvanized steel. Butterfly dampers provide weather protection when the fan is not in operation. A rain channel provides for run off of precipitation.

Propellers

Fabricated steel or cast aluminum blades and hubs. Propellers on belt driven units shall be welded to the fan shaft or secured to the fan shaft with a taperlock bushing. Propellers on direct drive units shall be mounted directly on the motor shaft with a taperlock bushing.

Curb Base

Heavy gauge galvanized or finish painted steel curb bases are provided with prepunched mounting holes. Curb base includes venturi inlet for efficient airflow.

Motor and Drive Frame

Support assemblies are constructed of heavy gauge galvanized or finish painted steel.

Bearings (LUB, LUBMO and LUBSH only)

Cast iron pillow block bearings selected for L-50 average life of 200,000 hours at maximum cataloged operating speeds.

Shaft (LUB, LUBMO and LUBSH only)

Shaft diameters are sized to have a first critical speed of at least 125% of the fan's maximum operating speed.

Motors

ODP, TEFC and Explosion proof, single and three phase motors are carefully matched to the fan load.

Exploded View

LUBMO | LUBSH

Drives (LUB, LUBMO and LUBSH only)

Drive sheaves shall be of cast iron and supplied as variable pitch as standard. Drives and belts shall be rated for 150% of the required motor HP on all belt driven models. V-belt drives shall be provided with a minimum of two belts on model LUBSH.

Motor Cover (LUBMO and LUBSH only)

An easily removable galvanized steel motor cover is a standard feature of models LUBMO and LUBSH. Allows for easy inspection and service of motor and drives from the roof. Motor cover bottom is enclosed with galvanized steel birdscreen.

Access Panel (LUBMO and LUBSH only)

An access panel for service and inspection is located on the housing side opposite the motor on models LUBMO and LUBSH.

Bearing Cover (LUBSH only)

An insulated bearing cover is standard on model LUBSH to protect the bearings from elevated airstream temperatures in smoke and heat/life safety applications.

Shaft Cooler (LUBSH only)

Model LUBSH is supplied with a shaft cooler as standard to draw ambient air in through the motor cover and cool the motor, drives and bearings.

Lifting Lugs

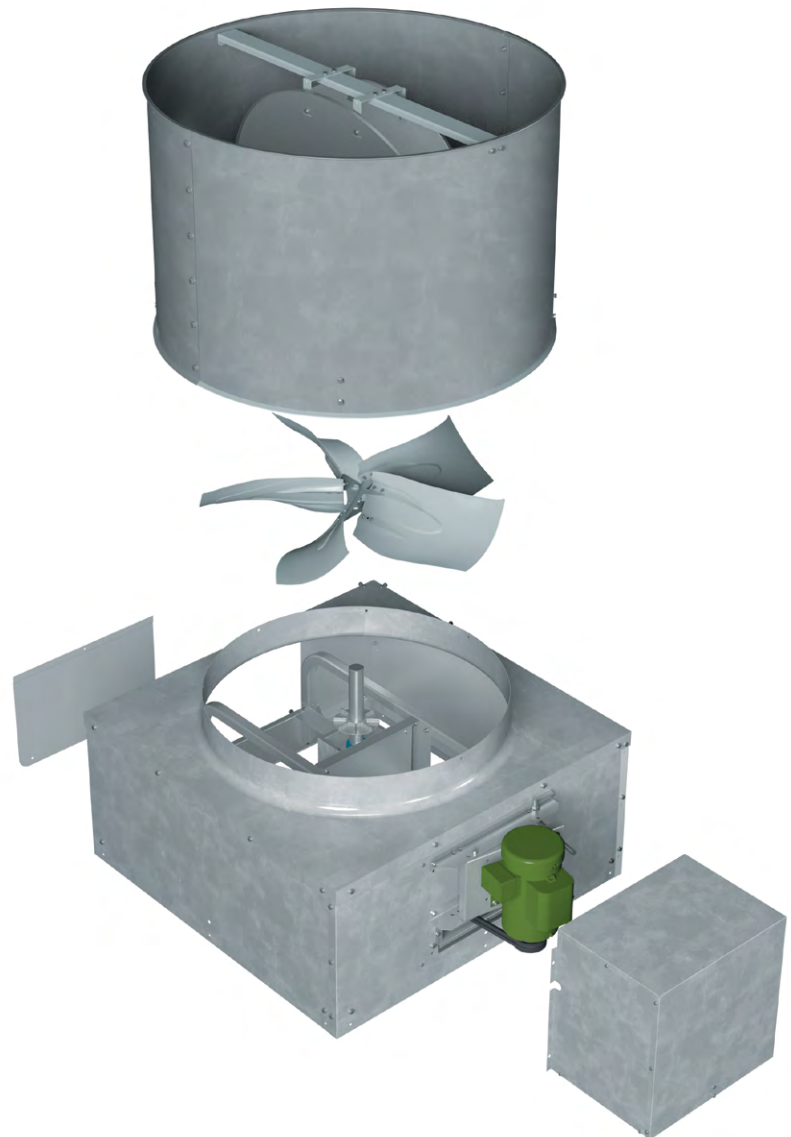
The windband brackets also double as lifting points for the unit.

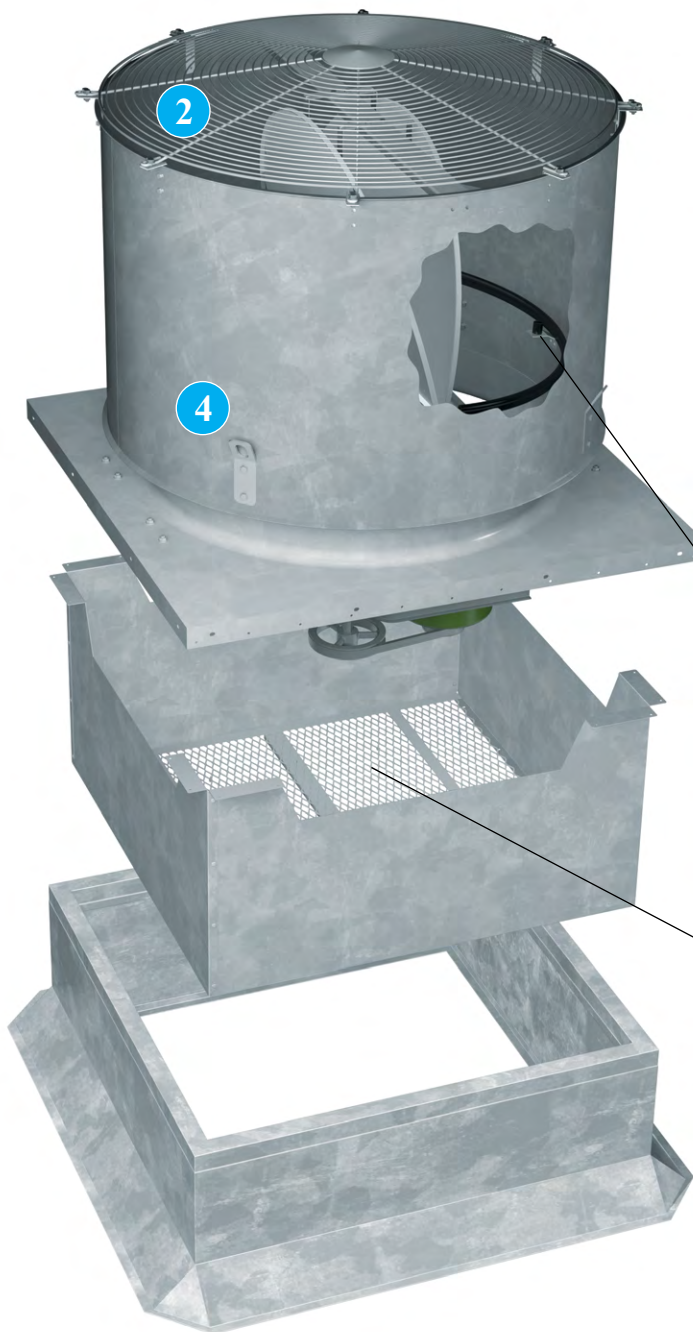
UL/cUL Listing

Models LUD, LUB and LUBMO are provided as standard with UL/cUL listing for electrical when supplied with specific motors. Model LUBSH is provided with UL/cUL listing for Smoke Control Systems as standard with specific motors. The LUBSH has been rated and tested for 500°F for 4 hours and 1000°F for 1 hour.

Mechanical Run Test & Final Vibration Check

All fans are assembled for a mechanical run test and final balance prior to shipment. Vibration readings are taken on both fan bearings in the axial, horizontal and vertical directions at the specified speed. Fans are balanced to 0.15 in./sec. peak or less.



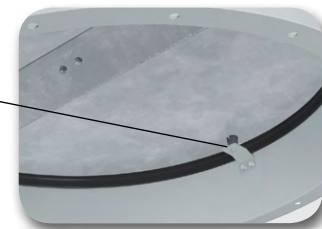


1 Basket Type Inlet Safety Screen A basket style guard shall be offered for models LUD and LUB to accommodate motors and drives extending down into the roof curb. Twin City Fan & Blower recommends the use of an inlet safety screen on all non-ducted installations.

2 Birdscreen (Outlet) A zinc plated steel birdscreen protects the fan discharge from birds and other types of debris. An aluminum insect screen (LUBMO only) at the fan inlet prevents insects from entering the building.

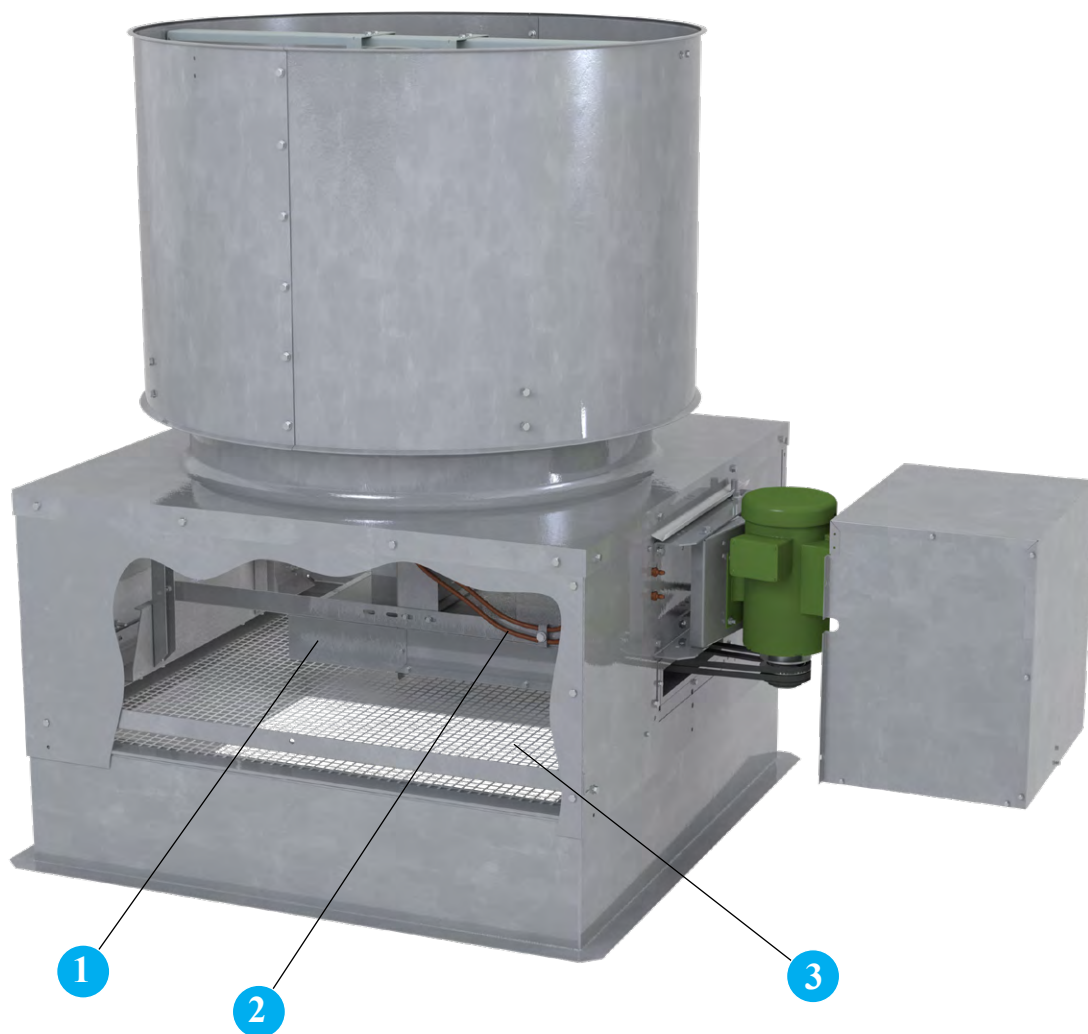
3 Magnetic Damper Latches Used to hold butterfly dampers closed when fan is not in operation. Damper blades must be steel with magnetic damper latches.

4 Tie Down Brackets Quantity of four brackets to allow for unit to be anchored to the roof. Cables by others.



Magnetic Damper Latch





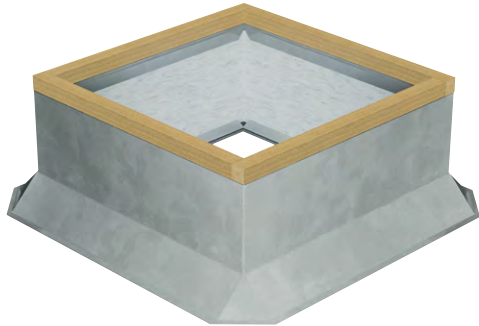
1 Belt Tube (LUMBO and LUBSH only) Protects belts from the airstream. This accessory is optional on model LUBMO, but an insulated version is standard on model LUBSH.

2 Extended Lube Lines Allow for easy lubrication of bearings on belt driven units without disassembly by extending polyethylene lines from fan bearings to exterior of base.

3 Flat Type Inlet Safety Guard A flat style guard to sit between the roof curb and the curb cap is available on models LUBMO and LUBSH. Twin City Fan & Blower recommends the use of an inlet safety screen on all non-ducted installations.

Other Accessories Include:

- Fusible Links (standard on Model LUBSH)
- Hinged Base
- Aluminum Housing
- Insect Screen
- Special Coatings



Canted Roof Curbs

- Constructed of 18-gauge galvanized steel with continuous welded seams
- Large 3" built-in 45° cant to accommodate roofing material to top of curb. Cant is beveled at corners for better support of roofing material
- Wood nailer (1½") secured to top ledge
- Lined with 1½" fiberglass fire-resistant, sound-absorbing insulation
- Damper shelf standard
- Options: Aluminum (16-gauge) construction, burglar security bars, metal liner (galvanized or aluminum), special heights up to 24", single or double pitched curbs for sloping roofs



Self-Flashing & Straight-Sided Roof Curbs

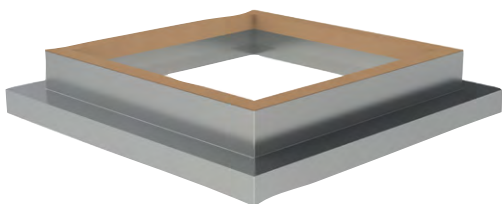
- Constructed of 18-gauge galvanized steel with continuous welded seams
- Wide base plate (flashing) to insure watertight seal to roof
- Top ledge covered with ¾" polystyrene gasket (self-flashing) for weather seal and to reduce metal-to-metal conducted noise
- Wood nailer secured to top ledge (straight-sided)
- Lined with 1½" fiberglass fire-resistant, sound-absorbing insulation
- Damper shelf standard
- Straight-sided roof curbs are constructed with the same features as the self-flashing curbs, but are one dimensional to allow for field supplied cants and roofing material to be brought up to the top of the curb
- Options: Aluminum (16-gauge) construction, burglar security bars, metal liner (galvanized or aluminum), special heights up to 24", single or double pitched curbs for sloping roofs



Self-Flashing Vented Roof Curbs

For High Temperature Applications

- Completely assembled unit, easier to install and less expensive than a field constructed curb
- Constructed of 18-gauge galvanized steel with continuous welded seams and wide base flashing for watertight seal to roof
- Meets NFPA-96 code requirements
- Top ledge covered with ¾" polystyrene gasket
- Furnished with ventilation slots



Curb Adapters

- Constructed of heavy-gauge galvanized steel with continuous welded seams
- Top ledge covered with ¾" polystyrene gasket to reduce metal-to-metal conducted noise and act as a weather seal
- Available in enlarger or reducer (shown) models

Disconnect switches provide positive electrical shutoff during fan cleaning or maintenance.

NEMA 1 Disconnect Switch (Standard)

A NEMA 1 disconnect switch is available shipped loose for field mounting and wiring or factory mounted and wired with ODP or TEFC motors.



NEMA 1 Disconnect Switch

NEMA 3R Disconnect Switch

A NEMA 3R, rain proof, disconnect is available shipped loose for field mounting and wiring or factory mounted and wired externally.



NEMA 3R Disconnect Switch

NEMA 4 Disconnect Switch

A NEMA 4, water and dust tight, disconnect is available shipped loose for field mounting and wiring or factory mounted and wired externally.



NEMA 4 Disconnect Switch

NEMA 7/9 Disconnect Switch

A NEMA 7/9 disconnect switch is recommended on fans with explosion proof motors. The NEMA 7/9 switch is designed for use with fans operating in hazardous environments. Available shipped loose for field mounting and wiring. (Not shown.)



Material Specifications – Direct Drive, LUD

FAN SIZE	GAUGE OF MATERIAL						
	WIND BAND	FAN PANEL	DRIVE FRAME	PROPELLERS			HUBS
				E	B	Z	Z
14	20	16	14	DIE CAST ALUM.	CAST ALUM.	---	---
16	20	16	14			---	---
18	20	16	14			---	---
21	20	16	14			---	---
24	20	16	12			14	12
30	20	16	12			14	12
36	20	16	12			12	12
42	20	14	10			10	10
48	20	14	10			10	10

* All gauges are minimums.

Material Specifications – Belt Driven, LUB/LUBMO/LUBSH

FAN SIZE	GAUGE OF MATERIAL												SHAFT SIZE (IN.)			
	LUBMO/ LUBSH HOUSING	WIND BAND	FAN PANEL	DRIVE FRAME		PROPELLERS				HUBS						
				L1/L2	E/B/C/Z	L1/L2	E	B	C	Z	L1/L2	Z	L1	L2	E/B/C/Z	
21	18	20	16	14	14	16	CAST ALUM.	CAST ALUM.	---	---	14	---	3/4	3/4	1	
24	18	20	16	14	14	16			---	14	14	12	3/4	3/4	1	
30	18	20	16	12	12	16			---	14	14	12	3/4	1	1	
36	18	20	16	12	12	16			---	12	14	12	3/4	1	1	
42	18	20	14	12	12	14			---	10	12	10	1	1 ³ / ₁₆	1 ³ / ₁₆	
48	18	20	14	12	12	14			---	10	12	10	1	1 ³ / ₁₆	1 ⁷ / ₁₆	
54	16	18	14	12	10	14			---	CAST ALUM.	10	12	7	1	1 ³ / ₁₆	1 ⁷ / ₁₆
60	16	18	14	12	10	12			---		10	3/16	7	1 ³ / ₁₆	1 ¹ / ₂	1 ¹¹ / ₁₆

* All gauges are minimums.

Shipping Weights

FAN SIZE	LUD	LUB			LUBMO			LUBSH		
		L1	L2	L3	L1	L2	L3	L1	L2	L3
14	85	---	---	---	---	---	---	---	---	---
16	96	---	---	---	---	---	---	---	---	---
18	108	---	---	---	---	---	---	---	---	---
21	133	138	144	148	273	281	283	273	281	283
24	161	160	162	175	302	307	320	302	307	320
30	213	210	232	242	395	417	477	395	417	477
36	290	256	281	321	469	493	542	469	493	542
42	370	324	399	438	630	676	778	630	676	778
48	416	372	454	519	711	760	875	711	760	875
54	---	443	522	594	831	911	1101	831	911	1101
60	---	549	633	724	988	1100	1214	988	1100	1214

* Weights are only approximate and do not include accessories. Consult Fan Selector Program for actual shipping weights.

CFM Required to Open Damper Blades

DAMPER MATERIAL		14	16	18	21	24	30	36	42	48	54	60
STEEL	MIN.	1955	2516	3179	4284	5627	8704	12444	16949	22032	28305	34782
	MAX.	2413	3519	4805	6363	8259	16223	24544	29853	41165	52321	60827
ALUM	MIN.	1380	1776	2244	3024	3972	6144	8784	11964	15552	19980	24552
	MAX.	2413	3519	4805	6363	8259	16223	24544	29853	41165	52321	60827

The terminal velocity of rain is approximately 2000 feet per minute. Selections below this point are not recommended if rain entry into the building is a concern.

Direct Drive, LUD

14 – 21 LUD

MODEL INFO			MOTOR HP	FAN RPM	MAX BHP	SONES @ 0" SP	CFM/STATIC PRESSURE (IN. W.G.)												
SIZE	PROPELLER	BLADE ANGLE					0.000	0.100	0.125	0.150	0.200	0.250	0.300	0.375	0.500	0.625	0.750	1.000	
Max RPM			B105 = 1750	E4 = 1750	E8 = 1750	Max Motor Frame Size = 56						Outlet Area (ft²) = 1.108							
14	B105 Cast Aluminum	10	1/4	1750	0.10	16.8	965	876	856	836	795	748	695	624	476	380	298		
		15	1/4	1750	0.14	15.4	1305	1222	1201	1179	1137	1093	1042	936	805				
		20	1/4	1750	0.19	15.1	1621	1535	1513	1490	1444	1397	1346	1240	1063				
		25	1/4	1750	0.25	15.2	1914	1819	1794	1769	1716	1663	1604	1489	1274	1083			
	E4 Cast Aluminum	20	1/4	1750	0.19	11.8	1880	1761	1728	1693	1615	1526	1418						
		24	1/4	1750	0.22	12.3	2087	1961	1926	1888	1804	1709	1610	1437					
		28	1/4	1750	0.26	13.0	2257	2121	2084	2046	1967	1879	1775	1578					
		32	1/3	1750	0.31	14.0	2413	2259	2218	2177	2092	1998	1884	1669					
	E8 Cast Aluminum	16	1/4	1750	0.21	14.3	1584	1517	1499	1480	1441	1398							
		20	1/4	1750	0.26	14.2	1838	1764	1745	1724	1682	1637	1588	1508					
			24	1/3	1750	0.32	14.3	2095	2016	1996	1974	1930	1883	1832	1749	1596	1413		
	Max RPM			B105 = 1750	E4 = 1750	E8 = 1750	Max Motor Frame Size = 56						Outlet Area (ft²) = 1.44						
16	B105 Cast Aluminum	10	1/4	1750	0.16	20	1417	1310	1284	1259	1210	1160	1103	1009	864	676	562		
		15	1/4	1750	0.25	18.8	1919	1819	1794	1768	1717	1666	1613	1520	1321	1162			
		20	1/3	1750	0.34	18.9	2387	2283	2256	2229	2174	2119	2063	1971	1738	1548	1340		
		25	1/2	1750	0.44	19.2	2814	2701	2672	2642	2580	2518	2453	2348	2094	1857	1630		
	E4 Cast Aluminum	16	1/4	1750	0.23	17.2	2327	2183	2144	2104	2021	1928	1818						
		20	1/3	1750	0.29	18.1	2664	2518	2479	2438	2349	2252	2147	1971					
		24	1/4	1750	0.37	18.6	2981	2829	2787	2744	2653	2551	2440	2250	1879				
		28	1/2	1750	0.45	19.0	3283	3111	3066	3019	2924	2824	2716	2524	2102				
	E8 Cast Aluminum	16	1/3	1750	0.34	13.4	2272	2191	2170	2148	2103	2056	2005	1923					
		20	1/2	1750	0.44	15.0	2668	2574	2551	2526	2478	2428	2379	2305	2167	1959			
			24	1/2	1750	0.55	15.4	3051	2965	2943	2920	2873	2822	2769	2681	2508	2304	2046	
	Max RPM			B105 = 1750	E4 = 1750	E8 = 1750	Max Motor Frame Size = 56						Outlet Area (ft²) = 1.817						
18	B105 Cast Aluminum	10	1/4	1750	0.25	24	1985	1858	1827	1796	1737	1679	1618	1513	1333	1139	923	668	
		15	1/2	1750	0.40	22	2697	2578	2548	2518	2456	2396	2335	2239	2021	1806	1609		
		20	1/2	1750	0.53	23	3354	3232	3200	3169	3104	3038	2972	2871	2667	2377	2160		
		25	3/4	1750	0.69	23	3952	3818	3784	3749	3678	3604	3530	3414	3190	2864	2595		
	E4 Cast Aluminum	16	1/3	1750	0.34	17.1	3168	2987	2941	2894	2797	2697	2591	2419					
		20	1/2	1750	0.43	18.8	3620	3453	3408	3361	3260	3150	3037	2868	2547				
		24	1/2	1750	0.54	19.2	4055	3861	3813	3764	3668	3568	3462	3278	2920	2523			
		28	3/4	1750	0.65	20	4432	4246	4198	4148	4045	3937	3822	3634	3267	2839	2273		
	E8 Cast Aluminum	12	1/2	1750	0.43	23	2565	2457	2430	2402	2346	2288							
		16	1/2	1750	0.52	22	3135	3037	3012	2986	2934	2880	2824	2738	2580	2379			
			20	3/4	1750	0.68	23	3713	3597	3568	3539	3482	3426	3370	3292	3166	3017	2683	
	Max RPM			B105 = 1750	E4 = 1750	E8 = 1750	Max Motor Frame Size = 145T						Outlet Area (ft²) = 2.463						
21	B105 Cast Aluminum	10	1/2	1750	0.43	29	3082	2923	2883	2844	2766	2689	2613	2493	2264	2035	1778	1280	
		15	3/4	1750	0.68	28	4207	4055	4017	3978	3900	3820	3742	3624	3408	3113	2840		
		20	1	1750	0.98	28	5233	5077	5037	4996	4915	4831	4747	4620	4398	4122	3759	3172	
		25	1 1/2	1750	1.27	29	6159	5990	5946	5903	5814	5722	5629	5488	5239	4945	4546	3833	
	E4 Cast Aluminum	12	1/2	1750	0.40	24	3912	3657	3593	3530	3407	3282	3143						
		16	1/2	1750	0.53	25	4667	4438	4378	4316	4189	4056	3916	3695	3276				
		20	3/4	1750	0.71	31	5515	5284	5224	5162	5037	4906	4769	4552	4148	3637			
		24	1	1750	0.89	30	6182	5937	5874	5809	5676	5536	5389	5159	4760	4291	3602		
	E8 Cast Aluminum	12	1/2	1750	1.11	31	6843	6577	6509	6440	6299	6156	6009	5779	5363	4882	4261		
		16	1/2	1750	1.34	32	7418	7159	7091	7023	6882	6737	6587	6349	5896	5344	4734		
	E8 Cast Aluminum	12	3/4	1750	0.68	22	3745	3613	3579	3544	3473	3399	3322	3199					
		16	1	1750	0.88	23	4678	4540	4505	4470	4398	4326	4251	4140	3947	3723	3428		
20		1	1750	1.16	26	5591	5450	5415	5379	5307	5234	5161	5050	4871	4684	4445	3635		
24		1 1/2	1750	1.46	28	6442	6315	6282	6249	6181	6111	6038	5925	5721	5491	5228	4503		

NOTES:

- Performance shown is for installation type A: Free inlet, free outlet.
- Performance ratings do not include the effects of appurtenances (accessories) in the airstream.
- The sound ratings shown are loudness values in fan sones at 5 ft. (1.5m) in a hemispherical free field calculated per AMCA Standard 301. Values are for installation Type A: Free inlet hemispherical sone levels.

24 - 36 LUD

MODEL INFO		BLADE ANGLE	MOTOR HP	FAN RPM	MAX BHP	SONES @ 0' SP	CFM/STATIC PRESSURE (IN. W.G.)											
SIZE	PROPELLER						0.000	0.100	0.125	0.150	0.200	0.250	0.300	0.375	0.500	0.625	0.750	1.000
24	B105 Cast Aluminum	10	3/4	1750	0.68	41	4505	4306	4256	4206	4106	4006	3908	3758	3485	3187	2891	2160
		15	1 1/2	1750	1.12	37	6176	5983	5934	5885	5786	5685	5584	5433	5172	4865	4486	3818
		20		1750	1.55	35	7684	7486	7435	7384	7281	7177	7071	6910	6637	6339	5966	5145
		25	2	1750	2.04	34	9030	8817	8763	8709	8598	8485	8370	8194	7894	7570	7187	6242
		30	3	1750	2.57	35	10209	9973	9913	9852	9728	9601	9471	9271	8920	8537	8103	7039
	E4 Cast Aluminum	12	1/2	1750	0.55	34	5245	4935	4854	4770	4594	4408	4217					
		16	3/4	1750	0.80	35	6599	6290	6211	6131	5969	5804	5634	5367	4873	4300		
		20	1	1750	1.06	37	7686	7391	7314	7236	7075	6907	6728	6447	5965	5438	4779	
		24	1 1/2	1750	1.37	41	8735	8428	8349	8269	8106	7939	7769	7503	7025	6484	5874	
		28	2	1750	1.70	44	9654	9348	9269	9189	9025	8855	8678	8400	7912	7411	6855	
	E8 Cast Aluminum	12	1	1750	0.98	40	5222	5064	5023	4980	4893	4801	4703	4542	4235			
		16	1 1/2	1750	1.35	39	6642	6453	6405	6357	6261	6165	6068	5925	5689	5433	5110	4258
		20		1750	1.78	41	8004	7840	7798	7755	7669	7581	7491	7352	7111	6854	6571	5816
		24	2	1750	2.28	46	9253	9078	9033	8988	8897	8805	8711	8567	8319	8064	7791	7087
		30	3	1750	2.92	44	10605	10290	10210	10128	9963	9794	9621	9354	8886	8390	7852	
	Z5 Fabricated Steel	30	1/2	860	0.23	13.4	4379											
		35	1/3	860	0.32	13.6	5198	4770	4644	4506	4190							
		40		860	0.42	14.7	5993	5503	5351	5180	4826	4484						
		45	1/2	860	0.51	15.4	6504	5960	5802	5633	5255	4798						
		30	1/2	1160	0.56	23	5906	5574	5491	5409	5249	5093	4926	4606				
35		3/4	1160	0.79	23	7011	6710	6629	6545	6368	6174	5959	5593	4767				
40		1	1160	1.03	25	8084	7741	7648	7551	7344	7106	6842	6454	5765				
45		1 1/2	1160	1.24	26	8774	8388	8285	8179	7956	7715	7454	7022					
30	2	1750	1.92	44	8910	8690	8635	8580	8470	8360	8250	8087	7827	7563	7263	6374		
		Max RPM	B105 = 1750	E4 = 1750	E8 = 1750	Z5 = 1750	Max Motor Frame Size = 184T					Outlet Area (ft²) = 3.31						
30	B105 Cast Aluminum	10	1/2	1160	0.40	29	5664	5187	5060	4929	4657	4379	4088	3592	2599	1548	670	
		15	3/4	1160	0.65	27	7830	7341	7215	7087	6827	6556	6263	5769	4867			
		20	1	1160	0.96	26	9748	9243	9113	8981	8714	8442	8155	7673	6723	5611		
		25	1 1/2	1160	1.30	26	11423	10898	10762	10625	10344	10056	9756	9266	8296	6975		
		30	2	1160	1.69	27	12859	12308	12164	12018	11716	11402	11073	10544	9552	7724		
	E4 Cast Aluminum	12	3/4	1160	0.68	28	7214	6723	6594	6463	6191							
		16	1	1160	0.92	27	8728	8219	8090	7961	7703	7444	7174	6739				
		20		1160	1.21	28	10172	9721	9603	9483	9237	8980	8711	8282	7477	6403		
		24	1 1/2	1160	1.54	28	11588	11108	10983	10857	10596	10326	10044	9599	8806	7793	6306	
		28	2	1160	1.92	31	13030	12536	12407	12277	12010	11734	11448	10994	10142	9111	7803	
	E8 Cast Aluminum	12		1160	1.13	29	7077	6808	6737	6665	6515	6357	6189					
		16	1 1/2	1160	1.49	30	8704	8449	8383	8315	8175	8029	7877	7630	7164	6615		
		20	2	1160	1.95	31	10546	10235	10157	10078	9919	9760	9599	9363	8969	8511	7804	
		30	3	1160	2.61	30	14188	13653	13514	13374	13086	12791	12485	12003	11118	10018		
	Z5 Fabricated Steel	30	1/2	860	0.46	18.2	7675	6925	6767	6612	6273							
		35	3/4	860	0.66	18.4	9036	8385	8218	8054	7718	7325	6770					
		40		860	0.89	18.8	10518	9780	9583	9380	8953	8488	7977	6878				
		45	1	860	1.09	19.3	11378	10592	10383	10170	9724	9250	8771					
		30	1 1/2	1160	1.14	28	10352	9767	9630	9498	9255	9024	8791	8398	7587	6331		
		35		1160	1.61	28	12188	11711	11590	11467	11220	10974	10731	10352	9541	8396		
40	2	1160	2.18	30	14188	13653	13514	13374	13086	12791	12485	12003	11118	10018				
		Max RPM	B206 = 1750	E4 = 1750	E8 = 1750	Z5 = 1160	Max Motor Frame Size = 184T					Outlet Area (ft²) = 5.032						
36	B206 Cast Aluminum	10	1	1160	0.95	42	9156	8597	8453	8306	8007	7697	7367	6813	5805	4640	3369	1247
		15	1 1/2	1160	1.46	42	12488	11966	11830	11692	11407	11111	10803	10308	9316	8226		
		20	2	1160	2.14	43	15596	15064	14925	14785	14496	14197	13886	13395	12475	11340	10058	
		25	3	1160	2.93	43	18473	17902	17754	17604	17297	16980	16652	16136	15192	14098	12710	
		30	5	1160	3.90	46	21102	20469	20305	20140	19800	19451	19089	18522	17499	16386	14935	
	E4 Cast Aluminum	12	1	1160	1.04	39	9884	9187	9011	8835								
		16	1 1/2	1160	1.38	37	12244	11592	11424	11255	10913	10565	10204	9616				
		20	2	1160	1.86	41	15011	14420	14265	14106	13776	13426	13050	12445	11344	10077		
		24		1160	2.44	41	17342	16721	16559	16394	16053	15697	15317	14710	13661	12546	11145	
		28	3	1160	3.16	45	19689	19056	18890	18722	18376	18015	17632	17014	15925	14814	13444	
	E8 Cast Aluminum	12	2	1160	1.86	41	10061	9603	9488	9373	9144	8919						
		16		1160	2.46	46	12867	12525	12435	12343	12154	11955	11746	11403	10724	10005	9235	
		20	3	1160	3.31	48	15823	15463	15370	15276	15085	14888	14686	14371	13814	13199	12485	10564
	Z5 Fabricated Steel	30	1 1/2	860	1.15	26	13261	12327	12115	11918	11544	11162	10728	9962				
		35		860	1.63	26	15612	14837	14639	14438	14040	13646	13232	12483	10674			
		40	2	860	2.21	26	18173	17301	17073	16840	16363	15865	15340	14488	12734			
		45		860	2.71	27	19657	18727	18485	18239	17735	17212	16666	15812	14092			
		30	3	1160	2.83	40	17886	17171	17002	16835	16511	16208	15923	15509	14779	13896	12828	
			Max RPM	B206 = 1750	E4 = 1750	E8 = 1750	Z5 = 1160	Max Motor Frame Size = 215T					Outlet Area (ft²) = 7.217					

NOTES:

1. Performance shown is for installation type A: Free inlet, free outlet.
2. Performance ratings do not include the effects of appurtenances (accessories) in the airstream.
3. The sound ratings shown are loudness values in fan sones at 5 ft. (1.5m) in a hemispherical free field calculated per AMCA Standard 301. Values are for installation Type A: Free inlet hemispherical sone levels.

Direct Drive, LUD

42 – 48 LUD

MODEL INFO		MOTOR HP	FAN RPM	MAX BHP	SONES @ 0" SP	CFM/STATIC PRESSURE (IN. W.G.)													
SIZE	PROPELLER					BLADE ANGLE	0.000	0.100	0.125	0.150	0.200	0.250	0.300	0.375	0.500	0.625	0.750	1.000	
		Max RPM	B304 = 1160	E4 = 1160	E8 = 1160	Z5 = 860	Max Motor Frame Size = 256T						Outlet Area (ft ²) = 9.794						
42	B304 Cast Aluminum	10	1	860	0.77	30	12428	11374	11103	10826	10238	9579	8866	7707	5347	2902			
		15	1 1/2	860	1.22	30	16080	14988	14690	14383	13744	13076	12370	11298	9313				
		20	2	860	1.76	32	19218	18072	17755	17427	16745	16046	15320	14196	12263				
		25	3	860	2.37	34	21847	20627	20292	19946	19231	18498	17739	16542	14378				
	E4 Cast Aluminum	12	1 1/2	860	1.32	26	13804	12836	12585	12331									
		16	2	860	1.79	27	16795	15816	15568	15319	14823	14323	13800	12948					
		24	3	860	3.03	30	22663	21737	21496	21250	20746	20219	19667	18798	17264	15378	12623		
		28	5	860	3.80	34	25547	24599	24352	24101	23586	23049	22488	21599	19973	18059	15542		
	E8 Cast Aluminum	12	2	860	2.24	24	13669	13120	12977	12831	12529	12216							
		16	3	860	2.94	27	16974	16478	16348	16216	15943	15658	15358	14870	13943	12879			
		20	5	860	3.89	29	20646	20064	19916	19767	19466	19160	18850	18385	17603	16706	15408		
	Z5 Fabricated Steel	24	5	860	4.95	29	23718	23213	23082	22949	22678	22398	22108	21653	20831	19895	18736	15472	
		30	3	860	3.20	33	21735	21160	21008	20852	20527	20183	19814	19179	17864	16492	14712		
			35	5	860	4.38	36	26204	25057	24802	24558	24118	23728	23360	22814	21774	20214	18311	
		Max RPM	B304 = 1160	E4 = 1160	E8 = 1160	Z5 = 860	Max Motor Frame Size = 256T						Outlet Area (ft ²) = 12.764						
48	B304 Cast Aluminum	10	1 1/2	860	1.11	34	17127	15832	15495	15157	14462	13699	12810	11418	8868	5212	2113		
		15	2	860	1.78	36	22407	21111	20765	20409	19655	18849	18012	16667	14510				
		20	3	860	2.62	38	26990	25649	25293	24926	24151	23312	22433	21079	18733	16305			
		25	5	860	3.61	41	30874	29452	29078	28694	27892	27038	26138	24732	22177	19287			
	E4 Cast Aluminum	12	2	860	1.79	39	17359	16107	15790										
		16	3	860	2.37	39	21501	20330	20028	19724	19108	18480	17827	16758					
		20	5	860	3.20	44	26360	25296	25016	24729	24133	23498	22817	21722	19722	17406			
		24	5	860	4.20	43	30448	29330	29038	28740	28125	27479	26791	25693	23808	21770	19159		
	E8 Cast Aluminum	28	5	860	5.40	50	34564	33423	33125	32822	32197	31544	30848	29729	27773	25758	23163		
		12	3	860	3.19	42	17680	16854	16648	16442	16029	15628							
	Z5 Fabricated Steel	16	5	860	4.22	47	22610	21993	21831	21666	21324	20965	20586	19959	18724	17431	16013		
		20	5	860	5.68	48	27804	27155	26988	26819	26474	26119	25754	25186	24176	23057			
			30	5	860	4.86	44	31423	30140	29835	29537	28956	28417	27909	27164	25831	24215	22225	

NOTES:

1. Performance shown is for installation type A: Free inlet, free outlet.
2. Performance ratings do not include the effects of appurtenances (accessories) in the airstream.
3. The sound ratings shown are loudness values in fan sones at 5 ft. (1.5m) in a hemispherical free field calculated per AMCA Standard 301. Values are for installation Type A: Free inlet hemispherical sone levels.



21 LUB

MODEL INFO		MOTOR HP	FAN RPM	MAX BHP	SONES @ 0" SP	CFM/STATIC PRESSURE (IN. W.G.)												
PROPELLER	BLADE ANGLE					0.000	0.100	0.125	0.150	0.200	0.250	0.300	0.375	0.500	0.625	0.750	1.000	
Level 1 Performance		Max RPM L1 = 1085			Max Motor Frame Size = 56						Outlet Area (ft²) = 2.463							
L1 Fabricated Steel	---	1/4	730	0.22	10.1	4096	3533	3314	3087									
			762	0.25	10.7	4276	3760	3552	3343									
			786	0.28	11.2	4411	3925	3730	3528	3057								
	---	1/3	813	0.30	12.0	4562	4105	3928	3730	3305								
			838	0.33	12.5	4702	4268	4106	3916	3523								
			866	0.37	13.3	4860	4447	4301	4123	3751	3298							
---	1/2	915	0.43	14.2	5134	4754	4629	4477	4129	3750								
		960	0.50	15.9	5387	5030	4920	4789	4465	4128	3719							
			991	0.55	16.2	5561	5218	5116	4996	4695								
Level 2 Performance		Max RPM L2 = 1241			Max Motor Frame Size = 145T						Outlet Area (ft²) = 2.463							
L2 Fabricated Steel	---	1/2	915	0.43	14.2	5134	4754	4629	4477	4129	3750							
			960	0.50	15.9	5387	5030	4920	4789	4465	4128	3719						
			991	0.55	16.2	5561	5218	5116	4996	4695	4372	4004						
	---	3/4	1048	0.65	18.1	5881	5562	5469	5366	5109	4804	4493	3913					
			1099	0.75	19.6	6167	5866	5780	5688	5465	5182	4893	4394					
			1134	0.83	21	6363	6074	5992	5904	5701	5440	5158						
Level 3 Performance		Max RPM B105 = 1890			E4 = 1890		E8 = 1280		Max Motor Frame Size = 145T						Outlet Area (ft²) = 2.463			
B105 Cast Aluminum	20	1/4	1142	0.27	14.7	3388	3145	3077	3007	2858	2697	2510	2236					
			1048	0.27	13.0	3649	3355	3272	3184	2994	2782	2537	2188					
			977	0.27	12.1	3842	3474	3366	3251	3002	2709	2387						
	25	1/3	1252	0.36	17.3	3714	3495	3436	3374	3245	3107	2958	2695	2292				
			1150	0.35	15.1	4004	3741	3668	3592	3429	3252	3057	2728					
			1072	0.36	14.1	4216	3888	3794	3695	3481	3250	2978	2535					
	30	1/2	1438	0.54	21	4266	4078	4029	3977	3871	3759	3641	3453	3078	2733			
			1320	0.55	18.9	4596	4371	4311	4248	4116	3975	3825	3582	3110	2617			
			1231	0.55	17.6	4841	4562	4486	4406	4235	4051	3854	3520	2881				
	20	3/4	1646	0.79	26	4883	4721	4679	4636	4547	4454	4357	4206	3932	3612	3291		
			1511	0.82	24	5261	5067	5016	4964	4855	4740	4620	4427	4074	3653	3256		
			1409	0.82	22	5541	5302	5238	5172	5033	4885	4727	4474	3992	3438			
E4 Cast Aluminum	20	1/4	1307	0.27	14.9	3881	3566	3483	3397	3217	3028							
			1115	0.27	13.6	4306	3895	3790	3683	3449	3182							
			1042	0.27	12.6	4410	3984	3841	3690	3421	3140							
	28	1/3	1440	0.37	17.5	4276	3993	3918	3842	3685	3520	3349	3067					
			1227	0.37	15.8	4738	4366	4271	4176	3979	3760	3516	3083					
			1146	0.37	14.8	4850	4477	4362	4231	3962	3724	3468	2934					
	32	1/2	1648	0.55	22	4893	4648	4585	4520	4388	4251	4108	3886	3476				
			1405	0.55	20	5425	5102	5020	4937	4771	4600	4415	4107	3482				
			1312	0.55	18.4	5553	5236	5148	5052	4828	4590	4377	4059	3294				
20	3/4	1887	0.82	27	5603	5390	5336	5281	5168	5053	4934	4750	4428	4079	3588			
		1609	0.82	24	6213	5932	5861	5789	5644	5500	5352	5118	4672	4139	3377			
		1503	0.82	22	6361	6091	6017	5941	5776	5582	5372	5082	4618	3972				
E8 Cast Aluminum	32	1/4	885	0.27	11.6	4063	3727	3640	3552	3360	3097							
			974	0.37	13.4	4472	4169	4090	4011	3849	3667	3425						
	32	1/2	1113	0.55	16.1	5110	4847	4779	4710	4572	4431	4280	3993	3334				
			1277	0.82	20	5863	5635	5577	5518	5398	5277	5156	4965	4556	3989			

NOTES:

1. Performance certified is for installation type A: Free inlet, free outlet.
2. Power rating (BHP) does not include transmission losses.
3. Performance ratings do not include the effects of appurtenances (accessories) in the airstream.
4. The sound ratings shown are loudness values in fan sones at 5 ft. (1.5m) in a hemispherical free field calculated per AMCA Standard 301. Values are for installation Type A: Free inlet hemispherical sone levels.



Belt Driven, LUB

24 LUB

MODEL INFO		MOTOR HP	FAN RPM	MAX BHP	SONES @ 0" SP	CFM/STATIC PRESSURE (IN. W.G.)													
PROPELLER	BLADE ANGLE					0.000	0.100	0.125	0.150	0.200	0.250	0.300	0.375	0.500	0.625	0.750	1.000		
Level 1 Performance		Max RPM L1 = 907			Max Motor Frame Size = 56						Outlet Area (ft²) = 3.207								
L1 Fabricated Steel	---	1/4	585	0.22	9.0	4900	4023												
			610	0.25	9.7	5109	4300	4001											
			630	0.28	10.0	5277	4519	4230											
	---	1/3	652	0.30	10.7	5461	4755	4475	4192										
672			0.33	11.4	5629	4964	4697	4427											
			694	0.37	12.1	5813	5188	4940	4677	4077									
---	1/2	733	0.43	13.0	6139	5571	5359	5110	4598										
		769	0.50	14.3	6441	5914	5730	5507	5031	4464									
			794	0.55	15.1	6650	6146	5980	5776	5317	4807								
---	3/4	839	0.65	16.1	7027	6560	6415	6243	5819	5379	4843								
		880	0.75	17.3	7371	6931	6800	6651	6272	5857	5403								
			907	0.83	18.0	7597	7174	7050	6912	6564	6162								
Level 2 Performance		Max RPM L2 = 986			Max Motor Frame Size = 145T						Outlet Area (ft²) = 3.207								
L2 Fabricated Steel	---	1/2	733	0.43	13.0	6139	5571	5359	5110	4598									
			769	0.50	14.3	6441	5914	5730	5507	5031	4464								
			794	0.55	15.1	6650	6146	5980	5776	5317	4807								
	---	3/4	839	0.65	16.1	7027	6560	6415	6243	5819	5379	4843							
880			0.75	17.3	7371	6931	6800	6651	6272	5857	5403								
			907	0.83	18.0	7597	7174	7050	6912	6564	6162	5746							
---	1	940	0.91	19.1	7873	7469	7352	7225	6913	6528	6140	5442							
		969	1.00	20	8116	7726	7615	7496	7211	6848	6473	5840							
			986	1.10	20	8259	7877	7768	7653	7382	7035	6665	6069						
Level 3 Performance		Max RPM B105 = 1930			E4 = 1930		E8 = 1175		Z5 = 1450		Max Motor Frame Size = 145T			Outlet Area (ft²) = 3.207					
B105 Cast Aluminum	20	1/3	1067	0.35	17.0	4644	4312	4221	4127	3928	3713	3472	3093						
			977	0.36	15.0	4985	4588	4477	4360	4109	3836	3512	3018						
			910	0.36	13.4	5231	4745	4605	4455	4136	3767	3305							
	25	1/2	1226	0.54	20	5336	5052	4976	4898	4735	4563	4381	4087	3533					
			1122	0.55	18.0	5724	5387	5295	5200	4998	4781	4550	4148	3432					
			1045	0.55	16.9	6007	5596	5482	5362	5105	4828	4531	3969						
	30	3/4	1403	0.82	24	6106	5861	5797	5732	5596	5453	5306	5072	4643	4151	3673			
			1285	0.82	22	6556	6266	6189	6110	5944	5769	5584	5287	4711	4096				
			1197	0.82	20	6881	6529	6434	6336	6128	5905	5668	5292	4488					
	20	1	1544	1.06	28	6719	6499	6442	6383	6263	6138	6009	5807	5445	5037	4591			
			1414	1.09	24	7214	6953	6884	6814	6669	6516	6357	6103	5644	5098	4540			
			1317	1.10	23	7571	7254	7170	7084	6903	6711	6508	6184	5585	4805				
E4 Cast Aluminum	16	1/3	1335	0.37	25	4899	4515	4415	4314	4104									
			1109	0.37	19.0	5488	4976	4852	4727	4455	4137								
			963	0.37	15.4	5714	5109	4950	4783	4418	4009								
	24	1/2	1531	0.55	31	5618	5286	5200	5113	4937	4755	4562	4240						
			1268	0.55	23	6275	5826	5715	5606	5387	5152	4885	4433						
			1100	0.55	19.5	6527	6003	5866	5728	5437	5120	4771	4196						
	16	3/4	1745	0.82	40	6404	6114	6040	5965	5812	5658	5500	5251	4781	4212				
			1450	0.82	29	7176	6783	6685	6587	6396	6205	6006	5671	5015					
			1258	0.82	24	7465	7010	6892	6774	6532	6279	6009	5566	4716					
	24	1	1926	1.10	49	7068	6806	6740	6672	6536	6398	6258	6043	5656	5218	4702			
			1600	1.10	37	7918	7562	7473	7384	7208	7035	6862	6591	6063	5449	4711			
			1388	1.10	28	8236	7826	7720	7614	7398	7178	6948	6580	5890					
E8 Cast Aluminum	32	1/3	812	0.37	13.2	5426	4987	4864	4735	4443	4049								
			928	0.55	16.0	6202	5825	5723	5617	5393	5141	4830	4206						
	32	3/4	1062	0.82	19.9	7097	6773	6687	6599	6415	6220	6009	5635	4739					
			1171	1.10	23	7826	7534	7458	7380	7218	7049	6873	6584	5964	5084				
Z5 Fabricated Steel	30	1/3	1003	0.37	17.8	5127	4721	4625	4533	4349	4135								
			766	0.37	13.6	5668	5057	4900	4720	4126									
	45	1/2	1146	0.55	22	5858	5500	5413	5327	5166	5006	4832	4496						
			875	0.55	17.4	6474	5940	5806	5671	5361	5161	4857							
	30	3/4	1310	0.82	27	6697	6382	6305	6228	6078	5937	5798	5578	5093	4305				
			1001	0.82	22	7407	6943	6823	6706	6469	6205	5838	4994						
	45	1	1446	1.10	31	7392	7106	7035	6966	6827	6692	6565	6376	6027	5554	4844			
			1104	1.10	25	8169	7750	7642	7534	7322	7105	6866	6351						

NOTES:

- Performance certified is for installation type A: Free inlet, free outlet.
- Power rating (BHP) does not include transmission losses.
- Performance ratings do not include the effects of appurtenances (accessories) in the airstream.
- The sound ratings shown are loudness values in fan sones at 5 ft. (1.5m) in a hemispherical free field calculated per AMCA Standard 301. Values are for installation Type A: Free inlet hemispherical sone levels.

30 LUB

MODEL INFO		MOTOR HP	FAN RPM	MAX BHP	SONES @ 0" SP	CFM/STATIC PRESSURE (IN. W.G.)														
PROPELLER	BLADE ANGLE					0.000	0.100	0.125	0.150	0.200	0.250	0.300	0.375	0.500	0.625	0.750	1.000			
Level 1 Performance		Max RPM L1 = 696			Max Motor Frame Size = 145T											Outlet Area (ft²) = 5.032				
L1 Fabricated Steel	---	1/4	403	0.22	7.5	6591														
			421	0.25	7.9	6885														
			434	0.28	8.4	7098														
	---	1/3	449	0.30	8.9	7343														
			463	0.33	9.4	7572	6176													
			478	0.37	9.4	7818	6500	6020												
	---	1/2	505	0.43	10.7	8259	7080	6629	6149											
			530	0.50	11.4	8668	7600	7172	6741											
			547	0.55	12.2	8946	7942	7539	7124	6148										
	---	3/4	578	0.65	13.4	9453	8544	8197	7800	6972										
607			0.75	14.6	9928	9087	8788	8426	7670	6749										
626			0.83	15.3	10238	9435	9163	8830	8101	7259										
---	1	648	0.91	16.5	10598	9832	9586	9285	8587	7840										
		668	1.00	17.4	10925	10190	9962	9688	9020	8326	7477									
		689	1.10	18.1	11269	10563	10350	10101	9474	8812	8039									
Level 2 Performance		Max RPM L2 = 950			Max Motor Frame Size = 184T											Outlet Area (ft²) = 5.032				
L2 Fabricated Steel	---	3/4	578	0.65	13.4	9453	8544	8197	7800	6972										
			607	0.75	14.6	9928	9087	8788	8426	7670	6749									
			626	0.83	15.3	10238	9435	9163	8830	8101	7259									
	---	1	648	0.91	16.5	10598	9832	9586	9285	8587	7840									
			668	1.00	17.4	10925	10190	9962	9688	9020	8326	7477								
			689	1.10	18.1	11269	10563	10350	10101	9474	8812	8039								
	---	1 1/2	729	1.30	20	11923	11266	11074	10861	10325	9698	9055	8333							
			764	1.50	22	12495	11876	11698	11506	11041	10455	9862	9189							
			789	1.65	22	12904	12308	12139	11959	11535	10993	10415	9484							
	---	2	816	1.83	24	13346	12773	12613	12442	12056	11563	11001	10147							
841			2.00	25	13755	13202	13048	12886	12527	12078	11541	10728	9018							
868			2.20	26	14196	13664	13517	13363	13027	12619	12121	11333	9805							
Level 3 Performance		Max RPM B105 = 1565			E4 = 1565			E8 = 975			Z5 = 1295			Max Motor Frame Size = 184T			Outlet Area (ft²) = 5.032			
B105 Cast Aluminum	20	1/2	964	0.55	20	8007	7397	7232	7062	6709	6336	5933	5214							
			25	0.55	17.1	8455	7742	7545	7341	6911	6456	5893								
			30	0.55	15.5	8704	7867	7629	7379	6856	6231	5011								
	20	3/4	1104	0.82	24	9170	8645	8506	8363	8068	7761	7440	6932	5897						
			25	0.82	21	9678	9066	8902	8732	8378	8004	7613	6945							
			30	0.82	19.3	9956	9242	9046	8841	8408	7952	7478	6184							
	20	1	1215	1.10	28	10092	9618	9494	9368	9107	8837	8557	8119	7312	6329					
			25	1.10	24	10659	10109	9963	9814	9503	9177	8837	8304	7176						
			30	1.10	22	10959	10318	10146	9967	9591	9192	8776	8113							
	20	1 1/2	1390	1.65	33	11545	11135	11029	10921	10701	10473	10240	9877	9240	8547	7728				
			25	1.65	29	12202	11727	11603	11477	11217	10946	10665	10226	9452	8502	7225				
			30	1.65	26	12549	11998	11852	11703	11392	11065	10722	10185	9207	7200					
	20	2	1530	2.20	37	12708	12337	12242	12145	11949	11747	11541	11221	10665	10079	9448	7911			
			25	2.20	33	13425	12996	12885	12772	12541	12303	12056	11673	10997	10283	9409				
			30	2.20	30	13813	13315	13186	13053	12780	12495	12197	11728	10906	9940	8049				
	20	3	1752	3.28	46	14552	14230	14148	14065	13896	13725	13551	13282	12818	12334	11830	10739			
			25	3.29	39	15367	14994	14899	14802	14605	14404	14198	13878	13321	12733	12119	10643			
			30	3.30	37	15806	15375	15264	15151	14920	14682	14436	14052	13371	12653	11912				
E4 Cast Aluminum	16	1/2	981	0.55	22	7203	6663	6520	6372											
			24	0.55	17.0	8062	7359	7177	6992	6593										
			32	0.55	14.1	8541	7664	7409	7139	6566										
	16	3/4	1122	0.82	27	8238	7772	7650	7525	7269	7000	6714	6246							
			24	0.82	21	9216	8608	8450	8291	7967	7622	7230	6532							
			32	0.82	17.1	9773	9027	8820	8602	8134	7637	7075								
	16	1	1238	1.10	32	9089	8670	8561	8451	8224	7989	7745	7355	6619						
			24	1.10	25	10175	9627	9485	9342	9054	8759	8446	7911	6765						
			32	1.10	20	10778	10110	9930	9742	9342	8911	8460	7681							
	16	1 1/2	1417	1.65	40	10404	10040	9946	9852	9659	9461	9258	8943	8377	7744	6968				
			24	1.65	32	11652	11176	11055	10932	10682	10431	10176	9776	9005	8037					
			32	1.65	25	12345	11770	11619	11463	11137	10789	10421	9839	8709	6961					
	16	2	1560	2.20	48	11454	11125	11040	10955	10783	10607	10427	10150	9665	9140	8563	7029			
			24	2.20	39	12826	12395	12286	12175	11951	11723	11495	11147	10524	9791	8906				
			32	2.20	31	13589	13071	12936	12798	12512	12212	11896	11392	10494	9378	7788				
	24	3	1501	3.30	51	14685	14310	14215	14119	13926	13731	13533	13234	12728	12189	11582	10076			
			28	3.30	45	15178	14772	14668	14562	14349	14130	13907	13562	12955	12304	11611	9657			
			32	3.30	42	15562	15114	14998	14881	14640	14392	14135	13727	12997	12219	11351	8657			

NOTES:

1. Performance certified is for installation type A: Free inlet, free outlet.
2. Power rating (BHP) does not include transmission losses.
3. Performance ratings do not include the effects of appurtenances (accessories) in the airstream.
4. The sound ratings shown are loudness values in fan sones at 5 ft. (1.5m) in a hemispherical free field calculated per AMCA Standard 301. Values are for installation Type A: Free inlet hemispherical sone levels.

Belt Driven, LUB

30 LUB (cont.)

MODEL INFO		MOTOR HP	FAN RPM	MAX BHP	SONES @ 0" SP	CFM/STATIC PRESSURE (IN. W.G.)											
PROPELLER	BLADE ANGLE					0.000	0.100	0.125	0.150	0.200	0.250	0.300	0.375	0.500	0.625	0.750	1.000
Level 3 Performance			Max RPM	E4 = 1565	E8 = 975	Z5 = 1295	Max Motor					Frame Size = 184T		Outlet Area (ft ²) = 5.032			
E8 Cast Aluminum	32	1/2	613	0.55	14.7	7979	7439	7272	7075	6547							
	32	3/4	701	0.82	18.5	9125	8670	8539	8398	8061	7605	7055	6164				
	32	1	773	1.10	21	10062	9658	9545	9426	9164	8840	8423	7658	6393			
	32	1 1/2	884	1.64	26	11507	11160	11067	10969	10763	10536	10274	9768	8656	7551		
	32	2	975	2.20	30	12691	12381	12298	12213	12035	11844	11638	11278	10458	9385	8401	
Z5 Fabricated Steel	35	1/2	813	0.55	17.7	8369	7720	7535	7336	6897	6412						
	45	1/2	680	0.55	14.2	8904	7908	7645	7359	6706							
	35	3/4	929	0.82	22	9563	9008	8856	8697	8352	7970	7559	6851				
	45	3/4	778	0.82	17.9	10187	9322	9101	8874	8381	7826						
	35	1	1025	1.10	26	10552	10054	9921	9783	9492	9172	8825	8264	7106			
	45	1	858	1.10	21	11235	10454	10253	10053	9638	9178	8675					
	35	1 1/2	1174	1.65	32	12085	11657	11544	11429	11190	10937	10666	10223	9410	8429		
	45	1 1/2	983	1.65	26	12871	12194	12020	11845	11495	11136	10750	10112				
	35	2	1293	2.20	38	13310	12924	12824	12721	12510	12291	12061	11690	11003	10246	9349	
	45	2	1082	2.20	30	14168	13555	13398	13240	12923	12604	12276	11746	10732			
	45	3	1239	3.30	38	16223	15691	15555	15419	15143	14865	14588	14164	13396	12532		

NOTES:

1. Performance certified is for installation type A: Free inlet, free outlet.
2. Power rating (BHP) does not include transmission losses.
3. Performance ratings do not include the effects of appurtenances (accessories) in the airstream.
4. The sound ratings shown are loudness values in fan sones at 5 ft. (1.5m) in a hemispherical free field calculated per AMCA Standard 301. Values are for installation Type A: Free inlet hemispherical sone levels.



36 LUB

MODEL INFO		MOTOR HP	FAN RPM	MAX BHP	SONES @ 0" SP	CFM/STATIC PRESSURE (IN. W.G.)														
PROPELLER	BLADE ANGLE					0.000	0.100	0.125	0.150	0.200	0.250	0.300	0.375	0.500	0.625	0.750	1.000			
Level 1 Performance		Max RPM L1 = 533				Max Motor Frame Size = 145T						Outlet Area (ft²) = 7.217								
L1 Fabricated Steel	---	1/3	332	0.30	8.1	9073	6378													
			344	0.33	8.6	9401	6966	5043												
			355	0.36	9.1	9701	7423	5904												
	---	1/2	381	0.45	10.2	10412	8418	7628	5862											
			395	0.50	10.9	10795	8936	8223	6952											
			407	0.55	11.6	11123	9386	8695	7834											
	---	3/4	436	0.68	13.1	11915	10449	9783	9140	6450										
			452	0.75	13.9	12352	11002	10379	9761	7689										
			466	0.83	14.5	12735	11468	10903	10286	8802										
	---	1	480	0.90	15.0	13118	11920	11415	10805	9560	6590									
			497	1.00	15.9	13582	12455	12015	11440	10294	7969									
			513	1.10	16.8	14019	12947	12557	12037	10929	9236									
Level 2 Performance		Max RPM L2 = 671				Max Motor Frame Size = 184T						Outlet Area (ft²) = 7.217								
L2 Fabricated Steel	---	1	480	0.90	15.0	13118	11920	11415	10805	9560	6590									
			497	1.00	15.9	13582	12455	12015	11440	10294	7969									
			513	1.10	16.8	14019	12947	12557	12037	10929	9236									
	---	1 1/2	549	1.35	19.1	15003	14030	13717	13319	12282	11233	9075								
			569	1.50	20	15550	14623	14336	13988	13026	12042	10662								
			587	1.65	21	16042	15152	14883	14571	13700	12732	11667	7996							
---	2	605	1.80	22	16534	15678	15423	15139	14362	13406	12456	9473								
		626	2.00	23	17107	16288	16048	15786	15106	14184	13296	11116								
		646	2.20	25	17654	16866	16639	16393	15788	14933	14060	12526								
Level 3 Performance		Max RPM B206 = 1395 E4 = 1395 E8 = 915 Z5 = 1095				Max Motor Frame Size = 184T						Outlet Area (ft²) = 7.217								
B206 Cast Aluminum	20	3/4	844	0.82	26	11235	10482	10274	10054	9581	9067	8523	7546							
			25	761	0.83	22	11964	11057	10802	10531	9946	9320	8608	6863						
			30	692	0.83	20	12385	11260	10937	10597	9875	9091	7301							
	25	1	929	1.10	30	12366	11693	11510	11320	10915	10476	10008	9259	7669						
			25	837	1.10	26	13159	12348	12125	11892	11392	10850	10279	9267						
			30	761	1.10	23	13620	12616	12336	12042	11415	10751	10041							
	20	1 1/2	1064	1.65	36	14163	13584	13430	13272	12942	12591	12217	11617	10526	9175					
			25	958	1.65	32	15061	14365	14179	13986	13582	13147	12684	11946	10471					
			30	872	1.66	29	15607	14747	14516	14275	13767	13222	12649	11768						
	20	2	1171	2.20	43	15587	15066	14929	14789	14500	14196	13876	13364	12436	11410	10175				
			25	1055	2.20	37	16586	15960	15795	15625	15273	14900	14504	13871	12740	11252				
			30	959	2.19	34	17164	16391	16185	15974	15532	15062	14565	13783	12230					
	20	3	1340	3.30	54	17837	17385	17268	17149	16905	16653	16392	15980	15237	14430	13577	11471			
			25	1207	3.30	47	18976	18434	18293	18150	17854	17548	17227	16719	15799	14813	13704			
			30	1098	3.30	42	19651	18984	18809	18631	18264	17880	17477	16838	15702	14482	11703			
	20	5	1589	5.37	73	21151	20773	20677	20579	20380	20176	19968	19646	19079	18470	17820	16420			
			25	1431	5.50	62	22497	22045	21928	21811	21571	21325	21072	20679	19980	19226	18423	16702		
			30	1302	5.49	56	23303	22745	22602	22456	22159	21853	21538	21045	20166	19227	18250	14875		
E4 Cast Aluminum	20	3/4	814	0.82	23	10359	9375	9129	8881											
			28	735	0.82	23	12509	11436	11125	10791	10099	9404								
			32	684	0.82	22	12759	11548	11213	10861	10081	9162								
	20	1	964	1.10	29	12267	11440	11230	11022	10605	10173	9701	8910							
			28	811	1.10	25	13802	12847	12583	12301	11689	11063	10434	9304						
			32	754	1.10	26	14065	12982	12688	12384	11735	11005	10168	8626						
	20	1 1/2	1105	1.65	37	14062	13342	13160	12977	12613	12250	11880	11283	10142						
			28	928	1.65	29	15794	14973	14753	14526	14038	13506	12956	12139	10504					
			32	864	1.65	29	16117	15186	14939	14685	14158	13595	12984	11941	9717					
	20	2	1215	2.20	45	15461	14808	14643	14477	14145	13814	13484	12978	12041	10965					
			28	1023	2.20	32	17410	16674	16479	16279	15862	15410	14926	14179	12924	11321				
			32	951	2.20	32	17740	16901	16681	16456	15993	15507	14995	14156	12496	10260				
	20	3	1392	3.30	58	17714	17144	17001	16857	16568	16278	15988	15557	14821	14011	13111				
			28	1171	3.30	41	19929	19292	19126	18957	18610	18248	17863	17242	16155	15070	13812			
			32	1089	3.30	38	20314	19588	19400	19209	18818	18414	17997	17339	16123	14696	12979			
	20	5	1389	5.50	55	23639	23108	22971	22832	22550	22260	21963	21497	20649	19738	18827				
			28	1291	5.50	50	24082	23475	23319	23162	22842	22515	22181	21665	20760	19778	18685	16064		
			32																	
E8 Cast Aluminum	32	3/4	573	0.82	18.5	11859	10959	10707	10442	9857	9142									
		1	632	1.10	22	13080	12276	12057	11829	11341	10794	10144	8862							
	32	1 1/2	724	1.65	28	14984	14294	14110	13921	13525	13102	12644	11850	10007						
		2	797	2.20	32	16495	15874	15710	15543	15196	14832	14447	13818	12521	10679					
	32	3	912	3.30	38	18875	18337	18198	18056	17764	17463	17149	16654	15741	14635	13211				

NOTES:

1. Performance certified is for installation type A: Free inlet, free outlet.
2. Power rating (BHP) does not include transmission losses.
3. Performance ratings do not include the effects of appurtenances (accessories) in the airstream.
4. The sound ratings shown are loudness values in fan sones at 5 ft. (1.5m) in a hemispherical free field calculated per AMCA Standard 301. Values are for installation Type A: Free inlet hemispherical sone levels.

Belt Driven, LUB

36 LUB (cont.)

MODEL INFO		MOTOR HP	FAN RPM	MAX BHP	SONES @ 0" SP	CFM/STATIC PRESSURE (IN. W.G.)												
PROPELLER	BLADE ANGLE					0.000	0.100	0.125	0.150	0.200	0.250	0.300	0.375	0.500	0.625	0.750	1.000	
Level 3 Performance			Max RPM	E4 = 1395	E8 = 915	Z5 = 1095	Max Motor Frame Size = 184T						Outlet Area (ft ²) = 7.217					
Z5 Fabricated Steel	35	3/4	686	0.82	18.8	12201	11280	11019	10738	10120	9440							
	45		574	0.82	15.2	12984	11571	11200	10800	9892								
	35	1	757	1.10	22	13464	12643	12418	12181	11664	11091	10474	9377					
	45		634	1.10	17.9	14342	13067	12740	12405	11663	10808							
	35	1 1/2	867	1.65	27	15421	14716	14528	14334	13923	13475	12989	12202	10619				
	45		726	1.65	22	16423	15317	15033	14749	14165	13523	12823						
	35	2	954	2.20	32	16968	16334	16167	15995	15639	15259	14850	14184	12954	11409			
	45		799	2.20	26	18074	17074	16816	16559	16041	15504	14917	13952					
	35	3	1093	3.30	40	19440	18893	18750	18605	18307	17997	17673	17152	16187	15127	13898		
	45		915	3.30	32	20698	19829	19607	19384	18933	18482	18020	17280	15874				
	45	5	1085	5.50	44	24544	23815	23630	23443	23068	22688	22308	21735	20728	19597			

NOTES:

1. Performance certified is for installation type A: Free inlet, free outlet.
2. Power rating (BHP) does not include transmission losses.
3. Performance ratings do not include the effects of appurtenances (accessories) in the airstream.
4. The sound ratings shown are loudness values in fan sones at 5 ft. (1.5m) in a hemispherical free field calculated per AMCA Standard 301. Values are for installation Type A: Free inlet hemispherical sone levels.



42 LUB

MODEL INFO		MOTOR HP	FAN RPM	MAX BHP	SONES @ 0" SP	CFM/STATIC PRESSURE (IN. W.G.)													
PROPELLER	BLADE ANGLE					0.000	0.100	0.125	0.150	0.200	0.250	0.300	0.375	0.500	0.625	0.750	1.000		
Level 1 Performance		Max RPM L1 = 411			Max Motor Frame Size = 145T							Outlet Area (ft²) = 9.794							
L1 Fabricated Steel	---	1/2	295	0.45	9.2	12835	9547	6951											
			305	0.50	9.7	13271	10202	8205											
			315	0.55	10.2	13706	10821	9485	6501										
	---	3/4	337	0.68	11.3	14663	12136	11151	9369										
			349	0.75	12.0	15185	12858	11904	10765										
			361	0.83	12.5	15707	13571	12630	11672										
---	1	371	0.90	13.2	16142	14145	13224	12333	8506										
		385	1.00	14.1	16751	14917	14063	13205	10282										
		397	1.10	15.0	17273	15554	14784	13927	11842										
Level 2 Performance		Max RPM L2 = 703			Max Motor Frame Size = 184T							Outlet Area (ft²) = 9.794							
L2 Fabricated Steel	---	1	371	0.90	13.2	16142	14145	13224	12333	8506									
			385	1.00	14.1	16751	14917	14063	13205	10282									
			397	1.10	15.0	17273	15553	14783	13927	11842									
	---	1 1/2	425	1.35	16.8	18492	16968	16383	15601	14022	10833								
			440	1.50	17.8	19144	17699	17187	16496	14969	12774								
			454	1.65	18.6	19753	18372	17911	17303	15818	14184	10367							
	---	2	468	1.80	19.8	20363	19039	18616	18079	16652	15202	12167							
			484	2.00	20	21059	19794	19403	18932	17608	16242	14245							
			500	2.20	22	21755	20544	20177	19756	18570	17228	15747	10551						
	---	3	535	2.70	24	23278	22167	21842	21488	20581	19318	18092	15115						
			555	3.00	26	24148	23087	22781	22452	21657	20521	19311	17289						
			572	3.30	27	24888	23865	23573	23262	22540	21528	20324	18538						
---	5	635	4.50	31	27629	26725	26475	26213	25644	24968	24069	22455	19458						
		657	5.00	33	28586	27717	27479	27230	26695	26085	25303	23765	21165	15192					
		679	5.50	35	29543	28707	28479	28242	27735	27173	26488	25092	22623	17986					
Level 3 Performance		Max RPM B304 = 965 E4 = 965 E8 = 660 Z5 = 870			Max Motor Frame Size = 215T							Outlet Area (ft²) = 9.794							
B304 Cast Aluminum	20	1	736	1.10	25	16205	14829	14443	14045	13233	12407	11555	10172						
			25	1.10	22	16618	14971	14511	14042	13095	12064	10939							
			30	1.10	21	16655	14699	14163	13624	12382	10856								
	20	1 1/2	842	1.65	30	18538	17366	17043	16708	16015	15306	14594	13482	11464					
			25	1.65	28	19039	17638	17251	16852	16036	15213	14337	12918						
			30	1.65	25	19057	17388	16930	16463	15520	14456	13171							
	20	2	927	2.20	36	20410	19361	19075	18781	18169	17535	16890	15916	14225	12272				
			25	2.20	32	20935	19682	19338	18985	18256	17511	16764	15563	13310					
			30	2.20	30	20968	19474	19067	18650	17800	16939	15964	14198						
	20	3	1061	3.30	44	23360	22460	22219	21971	21459	20926	20377	19535	18115	16639	15076			
			25	3.31	40	23979	22907	22617	22320	21706	21070	20422	19446	17709	15778				
			30	3.31	37	24026	22746	22402	22050	21325	20584	19837	18637	16102					
20	5	1258	5.48	60	27698	26950	26755	26555	26143	25716	25277	24596	23420	22234	21010	18479			
		25	5.49	53	28421	27534	27298	27057	26562	26051	25524	24714	23342	21928	20397	16664			
		30	5.51	50	28477	27417	27136	26850	26262	25657	25038	24096	22480	20483	18203				
E4 Cast Aluminum	20	1	668	1.10	21	15159	13827	13510	13197	12551									
			28	1.10	16.4	16524	15021	14603	14166	13237	12225								
			32	1.10	15.5	16937	15248	14763	14249	13141									
	20	1 1/2	766	1.65	26	17382	16216	15929	15649	15103	14544	13934	12920						
			28	1.65	21	18939	17652	17306	16947	16190	15382	14534	12977						
			32	1.65	20	19392	17955	17559	17144	16253	15294	14225	11998						
	20	2	842	2.20	29	19107	18044	17781	17520	17015	16518	16009	15171	13524					
			28	2.20	24	20830	19671	19364	19049	18390	17691	16954	15789	13060					
			32	2.20	24	21370	20082	19736	19376	18612	17790	16918	15443						
	20	3	964	3.30	37	21876	20944	20714	20484	20028	19586	19152	18494	17282	15883	13927			
			28	3.30	29	23856	22854	22593	22327	21779	21206	20606	19659	17964	15687				
			32	3.29	29	24432	23321	23028	22728	22102	21436	20732	19609	17461	14339				
32	5	909	5.50	37	28993	28068	27828	27585	27085	26567	26027	25171	23631	21950	19867				
E8 Cast Aluminum	32	1	453	1.10	13.4	15813	14721	14391	14010	13051									
			519	1.65	17.5	18116	17196	16934	16655	16006	15182	14210	12468						
			572	2.20	21	19967	19146	18920	18682	18163	17546	16792	15443	12902					
32	2	653	3.30	26	22794	22089	21899	21703	21288	20838	20327	19395	17417	15177					
Z5 Fabricated Steel	30	1	602	1.10	21	15457	14311	14018	13726	13133	12479								
			45	1.10	19.8	17433	15556	15031	14446	12882									
			30	1.65	25	17716	16722	16468	16212	15703	15187	14641	13706						
	30	1 1/2	534	1.65	24	19977	18370	17938	17489	16486	15166	13374							
			45	2.20	29	19488	18587	18357	18127	17661	17199	16730	15979	14482	12216				
			45	2.20	28	21997	20555	20169	19776	18949	17997	16786	14241						
	30	3	869	3.30	35	22312	21528	21329	21129	20726	20320	19915	19306	18215	16932	15286			
			45	3.30	34	25177	23933	23606	23271	22587	21869	21083	19630	18150	16932	15286			
			40	5.49	44	29298	28363	28125	27885	27400	26908	26421	25684	24344	22583	20228			
	45	5	798	5.50	44	29853	28817	28548	28276	27717	27145	26559	25630	23771	21168				

NOTES:

- Performance certified is for installation type A: Free inlet, free outlet.
- Power rating (BHP) does not include transmission losses.
- Performance ratings do not include the effects of appurtenances (accessories) in the airstream.
- The sound ratings shown are loudness values in fan sones at 5 ft. (1.5m) in a hemispherical free field calculated per AMCA Standard 301. Values are for installation Type A: Free inlet hemispherical sone levels.

Belt Driven, LUB

48 LUB

MODEL INFO		MOTOR HP	FAN RPM	MAX BHP	SONES @ 0" SP	CFM/STATIC PRESSURE (IN. W.G.)												
PROPELLER	BLADE ANGLE					0.000	0.100	0.125	0.150	0.200	0.250	0.300	0.375	0.500	0.625	0.750	1.000	
Level 1 Performance		Max RPM L1 = 330			Max Motor Frame Size = 145T							Outlet Area (ft²) = 12.764						
L1 Fabricated Steel	---	3/4	297 280 289	0.90 0.75 0.83	12.0 10.4 11.4	17557 18208 18793	13651 14563 15367	11414 13036 14020	9438 11189									
	---	1	297 308 318	0.90 1.00 1.10	12.0 12.5 13.3	19313 20028 20679	16084 16084 17959	14805 14805 15501	12760 12760 9792									
	Level 2 Performance		Max RPM L2 = 564			Max Motor Frame Size = 184T							Outlet Area (ft²) = 12.764					
L2 Fabricated Steel	---	1	297 308 318	0.90 1.00 1.10	12.0 12.5 13.3	19313 20028 20679	16084 17077 17958	14805 15826 16726	12760 14432 15501	9792								
	---	1 1/2	340 352 364	1.35 1.50 1.65	15.0 15.9 16.9	22109 22890 23670	19778 20713 21619	18701 19770 20798	17572 18647 19722	14115 16215 17575	12692							
	---	2	375 388 400	1.80 2.00 2.20	18.0 18.5 19.2	24385 25231 26011	22430 23372 24232	21702 22730 23648	20715 21866 22888	18662 19873 20956	14793 17317 18903	14154						
	---	3	429 444 458	2.70 3.00 3.30	22 23 24	27897 28872 29783	26279 27326 28297	25785 26862 27858	25206 26343 27377	23558 24897 26103	21778 23142 24391	19573 21336 22734	15182 17884					
	---	5	508 526 543	4.50 5.00 5.50	29 30 32	33034 34204 35310	31726 32950 34102	31356 32598 33766	30961 32227 33413	30066 31404 32641	28840 30340 31701	27280 28906 30424	25024 26727 28272	16572 20123 23448				
	Level 3 Performance		Max RPM B304 = 1025			E4 = 1025	E8 = 670	Z5 = 805	Max Motor Frame Size = 215T				Outlet Area (ft²) = 12.764					
	B304 Cast Aluminum	20	1 1/2	738	1.64	30	22833	21240	20804	20346	19369	18342	17309	15734				
		25	662	1.64	26	23361	21457	20924	20365	19184	17972	16666	14400					
		30	598	1.63	24	23212	20913	20265	19588	18172	16442	13912						
		20	2	812	2.20	34	25122	23693	23309	22912	22068	21166	20231	18817	16433			
25		729	2.20	31	25726	24022	23558	23073	22045	20961	19861	18071						
30		658	2.17	28	25541	23487	22920	22330	21088	19789	18199	14658						
20		3	929	3.30	43	28742	27509	27184	26852	26161	25427	24652	23437	21374	19300	16841		
25		834	3.29	39	29431	27965	27575	27174	26333	25438	24501	23062	20470	17191				
30		754	3.26	35	29267	27508	27035	26547	25524	24445	23322	21470						
20		5	1102	5.51	58	34094	33068	32802	32531	31977	31404	30808	29864	28183	26458	24690	21062	
25		989	5.48	51	34901	33681	33363	33040	32374	31679	30950	29800	27790	25708	23374			
30		893	5.42	47	34663	33201	32817	32425	31615	30766	29881	28494	26045	22308				
20	7 1/2	1261	8.20	75	39014	38123	37894	37662	37191	36708	36212	35442	34071	32606	31097	28030		
25	1132	8.22	65	39947	38890	38617	38341	37777	37197	36598	35658	33989	32234	30457	26450			
30	1023	8.15	58	39709	38444	38117	37784	37102	36397	35666	34524	32513	30407	27633				
E4 Cast Aluminum	20	1 1/2	684	1.65	29	20613	19059	18666	18277	17488	16639	15699						
	28	575	1.65	24	23170	21356	20842	20289	19116	17948	16688							
	32	535	1.65	23	23626	21575	21014	20428	19153	17678	15955							
	20	2	753	2.20	33	22693	21284	20927	20570	19862	19140	18366	17076					
	28	633	2.20	30	25507	23885	23442	22973	21953	20882	19823	18075						
	32	589	2.20	28	26010	24171	23677	23166	22086	20896	19550	17165						
	20	3	862	3.30	42	25978	24750	24440	24129	23505	22887	22263	21279	19411	17234			
	28	725	3.30	38	29215	27821	27450	27068	26257	25372	24440	23048	20511	16833				
	32	674	3.30	36	29764	28179	27760	27332	26444	25506	24500	22810	19358					
	20	5	1022	5.50	58	30800	29766	29506	29245	28722	28195	27671	26889	25539	24036	22361		
	28	859	5.49	47	34614	33455	33153	32844	32208	31542	30830	29686	27719	25720	23277			
	32	800	5.51	47	35328	34009	33667	33319	32606	31870	31106	29898	27641	24968	21667			
28	7 1/2	984	8.25	55	39651	38648	38389	38126	37589	37036	36464	35554	33897	32175	30467	26349		
32	915	8.25	55	40407	39261	38967	38669	38062	37440	36803	35814	34057	32105	29883	24256			
E8 Cast Aluminum	32	1 1/2	448	1.65	20	21973	20449	20027	19586	18627	17508	16096						
	32	2	493	2.19	24	24181	22814	22444	22060	21247	20352	19329	17370					
	32	3	565	3.30	31	27712	26537	26226	25907	25241	24536	23781	22512	19712				
	32	5	670	5.51	43	32862	31884	31630	31371	30840	30288	29714	28805	27110	25002	22241		
Z5 Fabricated Steel	35	1 1/2	537	1.65	22	22635	21078	20644	20181	19164	18046	16800						
	45	449	1.65	17.9	24067	21663	21040	20385	18916									
	35	2	591	2.20	25	24911	23517	23137	22742	21886	20939	19920	18198					
	45	495	2.20	21	26532	24360	23805	23240	22023	20655								
	35	3	676	3.29	32	28494	27294	26975	26647	25960	25216	24411	23104	20602				
	45	566	3.30	26	30338	28451	27965	27481	26496	25442	24279	22145						
	35	5	802	5.50	42	33805	32808	32548	32283	31738	31170	30574	29610	27829	25860	23502		
	45	671	5.49	33	35966	34386	33982	33574	32756	31933	31086	29706	27045					
45	7 1/2	768	8.23	42	41165	39791	39441	39089	38378	37662	36947	35851	33849	31594				

NOTES:

1. Performance certified is for installation type A: Free inlet, free outlet.
2. Power rating (BHP) does not include transmission losses.
3. Performance ratings do not include the effects of appurtenances (accessories) in the airstream.
4. The sound ratings shown are loudness values in fan sones at 5 ft. (1.5m) in a hemispherical free field calculated per AMCA Standard 301. Values are for installation Type A: Free inlet hemispherical sone levels.

54 LUB

MODEL INFO		MOTOR HP	FAN RPM	MAX BHP	SONES @ 0" SP	CFM/STATIC PRESSURE (IN. W.G.)											
PROPELLER	BLADE ANGLE					0.000	0.100	0.125	0.150	0.200	0.250	0.300	0.375	0.500	0.625	0.750	1.000
Level 1 Performance		Max RPM L1 = 312				Max Motor Frame Size = 145T						Outlet Area (ft²) = 16.126					
L1 Fabricated Steel	---	1	244 253 261	0.90 1.00 1.10	10.7 11.4 12.1	22639 23474 24217	17876 19037 20063	15658 17251 18407	10569 13222 15420								
	---	1 1/2	280 290 299	1.35 1.50 1.65	13.3 14.2 15.1	25980 26907 27743	22502 23717 24762	20917 22198 23366	19323 20723 21915	14661 17116							
Level 2 Performance		Max RPM L2 = 467				Max Motor Frame Size = 184T						Outlet Area (ft²) = 16.126					
L2 Fabricated Steel	---	1 1/2	280 290 299	1.35 1.50 1.65	13.3 14.2 15.0	25980 26907 27743	22502 23717 24762	20917 22198 23366	19323 20723 21915	14661 17116							
	---	2	308 319 329	1.80 2.00 2.20	15.9 16.4 17.5	28578 29505 30526	25770 26856 28020	24524 25768 27076	23077 24358 25786	19661 21507 23124	14560 17727						
	---	3	352 365 377	2.70 3.00 3.30	19.4 20 22	32660 33866 34980	30391 31709 32915	29646 31031 32280	28668 30190 31537	26178 27843 29399	23470 25455 27104	17035 20646 24028					
	---	5	418 433 447	4.50 5.00 5.50	26 27 29	38784 40176 41475	36976 38444 39809	36449 37948 39336	35879 37414 38833	34462 36159 37691	32414 34353 36111	30356 32305 34096	25973 29059 31171	19764			
Level 3 Performance		Max RPM B406 = 985		C3 = 985		C6 = 795		Z5 = 665		Max Motor Frame Size = 254T			Outlet Area (ft²) = 16.126				
B406 Cast Aluminum	20	1 1/2	556	1.65	29	25855	23794	23236	22657	21448	20214	18990	16710				
	25		502	1.65	26	27125	24710	24032	23320	21817	20228	18278					
	30		455	1.65	24	27505	24618	23753	22818	20612	17552						
	20	2	612	2.20	32	28459	26607	26114	25606	24544	23437	22315	20624	16901			
	25		553	2.21	30	29880	27724	27133	26516	25210	23829	22387	19700				
	30		501	2.20	28	30286	27732	26993	26205	24469	22313	19516					
	20	3	700	3.30	40	32551	30950	30531	30104	29220	28294	27335	25866	23379	20191		
	25		632	3.30	36	34149	32293	31798	31287	30214	29075	27882	26026	22150			
	30		573	3.29	35	34639	32467	31862	31228	29863	28357	26670	23228				
	20	5	830	5.51	52	38596	37260	36915	36566	35853	35118	34358	33172	31120	29073	26795	
	25		750	5.52	49	40525	38985	38582	38171	37324	36437	35510	34048	31483	28548	24846	
	30		679	5.47	45	41047	39258	38777	38281	37236	36117	34918	32953	28641			
20	7 1/2	950	8.26	65	44177	43016	42719	42419	41810	41188	40552	39568	37845	36054	34250	30355	
25		858	8.25	60	46360	45026	44680	44330	43614	42876	42111	40913	38790	36551	34171	27883	
30		778	8.22	58	47031	45491	45085	44670	43808	42901	41945	40414	37571	33912	29255		
20	10	1046	10.95	78	48641	47590	47322	47053	46506	45950	45385	44518	43009	41427	39798	36544	
25		944	10.98	70	51007	49800	49489	49176	48536	47881	47209	46164	44320	42362	40323	35722	
30		856	10.95	68	51746	50356	49994	49625	48865	48073	47246	45938	43558	40899	37515		
C3 Cast Aluminum	10	1 1/2	662	1.65	18.7	24461	21774	20911	20005								
	20		534	1.65	13.7	25973	22427	21457	20506								
	10	2	728	2.20	23	26900	24540	23823	23033	21380							
	20		588	2.20	16.1	28599	25433	24563	23682	21948							
	10	3	834	3.30	28	30817	28819	28259	27655	26298	24861	23355	21127				
	20		673	3.29	20	32733	30021	29288	28534	26998	25488	23886	20806				
10	5	985	5.40	36	36396	34746	34302	33841	32857	31749	30547	28704	25517	22489			
20		798	5.50	26	38813	36560	35971	35367	34114	32822	31530	29613	25714	20363			
20	7 1/2	914	8.25	32	44455	42504	42000	41489	40439	39348	38226	36528	33732	30427	26089		
25		856	8.25	34	43935	41378	40833	40316	39326	38335	37271	35431	31896	27679			
25	10	942	11.00	39	48350	45985	45456	44961	44033	43138	42237	40770	37874	34552	30690		
C6 Cast Aluminum	10	1 1/2	533	1.65	16.4	23065	20572	20104									
	20		438	1.65	12.7	25525	22870	22129	21361								
	25		404	1.65	11.5	25437	22270	21578	20834								
	10	2	587	2.20	18.9	25402	23034	22592	22168	21290	20208						
	20		482	2.20	15.1	28089	25712	25064	24390	22985	21523						
	25		445	2.20	13.8	28019	25057	24439	23810	22455	20994						
	10	3	672	3.30	24	29080	26897	26467	26073	25327	24569	23694	22087				
	20		552	3.30	18.8	32168	30124	29582	29024	27854	26629	25371	23370				
	25		509	3.29	17.4	32048	29348	28788	28246	27150	25965	24737	22435				
	10	5	795	5.46	32	34402	32474	32058	31668	30975	30337	29711	28719	26603	24331	22309	
	20		654	5.49	24	38112	36409	35966	35515	34588	33617	32608	31043	28306	25232		
	25		604	5.50	23	38030	35658	35137	34649	33722	32810	31859	30345	27487	23107		
20	7 1/2	749	8.25	31	43649	42172	41792	41407	40623	39815	38979	37675	35402	33029	30446		
25		691	8.24	27	43508	41392	40906	40441	39579	38766	37971	36750	34552	32128	28559		
20	10	795	9.87	34	46329	44942	44586	44226	43495	42745	41975	40774	38672	36491	34196	28888	

NOTES:

1. Performance certified is for installation type A: Free inlet, free outlet.
2. Power rating (BHP) does not include transmission losses.
3. Performance ratings do not include the effects of appurtenances (accessories) in the airstream.
4. The sound ratings shown are loudness values in fan sones at 5 ft. (1.5m) in a hemispherical free field calculated per AMCA Standard 301. Values are for installation Type A: Free inlet hemispherical sone levels.

Belt Driven, LUB

54 LUB (cont.)

MODEL INFO		MOTOR HP	FAN RPM	MAX BHP	SONES @ 0" SP	CFM/STATIC PRESSURE (IN. W.G.)											
PROPELLER	BLADE ANGLE					0.000	0.100	0.125	0.150	0.200	0.250	0.300	0.375	0.500	0.625	0.750	1.000
Level 3 Performance			Max RPM	C3 = 985	C6 = 795	Z5 = 665			Max Motor Frame Size = 254T					Outlet Area (ft²) = 16.126			
Z5 Fabricated Steel	30	1 1/2	444	1.65	18.8	24869	22842	22342	21853	20846							
	45		341	1.65	17.1	27747	24529	23637	22577								
	30	2	489	2.20	22	27390	25550	25088	24635	23746	22814	21732					
	45		375	2.19	19.7	30514	27613	26849	26034	23927	20730						
	30	3	559	3.29	27	31310	29702	29299	28895	28100	27323	26528	25185	22250			
	45		430	3.30	25	34989	32487	31833	31173	29769	28008	25497					
	30	5	663	5.50	35	37136	35781	35441	35102	34421	33743	33083	32098	30319	28105	25103	
	45		510	5.51	33	41499	39419	38876	38325	37219	36076	34817	32339				
	40	7 1/2	622	8.25	41	46963	45450	45056	44657	43837	42988	42111	40726	38118	34825	30510	
	45		584	8.27	41	47520	45718	45253	44782	43822	42858	41876	40294	36736	31312		
45	10	643	11.04	48	52321	50691	50273	49851	48992	48117	47242	45899	43382	39808	34855		

NOTES:

1. Performance certified is for installation type A: Free inlet, free outlet.
2. Power rating (BHP) does not include transmission losses.
3. Performance ratings do not include the effects of appurtenances (accessories) in the airstream.
4. The sound ratings shown are loudness values in fan sones at 5 ft. (1.5m) in a hemispherical free field calculated per AMCA Standard 301. Values are for installation Type A: Free inlet hemispherical sone levels.



60 LUB

MODEL INFO		MOTOR HP	FAN RPM	MAX BHP	SONES @ 0" SP	CFM/STATIC PRESSURE (IN. W.G.)													
PROPELLER	BLADE ANGLE					0.000	0.100	0.125	0.150	0.200	0.250	0.300	0.375	0.500	0.625	0.750	1.000		
Level 1 Performance		Max RPM L1 = 300			Max Motor Frame Size = 145T														
L1 Fabricated Steel	---	1	205	0.90	10.1	26124	19379	13845											
			212	1.00	10.7	27016	20735	16520											
			219	1.10	11.1	27908	22015	19238											
	---	1 1/2	235	1.35	12.6	29947	24854	22802	19205										
			243	1.50	13.6	30966	26286	24280	21944										
			251	1.65	13.8	31986	27685	25710	23719										
---	2	258	1.80	14.6	32878	28861	26944	25086	16983										
		268	2.00	15.5	34152	30466	28731	26923	20839										
		276	2.20	16.1	35171	31700	30153	28348	24004										
Level 2 Performance		Max RPM L2 = 399			Max Motor Frame Size = 215T														
L2 Fabricated Steel	---	1 1/2	235	1.35	12.6	29947	24854	22802	19205										
			243	1.50	13	30966	26286	24280	21944										
			251	1.65	13.8	31986	27685	25710	23719										
	---	2	258	1.80	14.6	32878	28861	26944	25086	16983									
			268	2.00	15.5	34152	30466	28731	26923	20839									
			276	2.20	16.1	35171	31698	30151	28348	24004									
	---	3	296	2.70	18.2	37720	34639	33489	31907	28603	21958								
			306	3.00	19.2	38994	36062	35047	33664	30463	25891								
			316	3.30	20	40269	37469	36552	35350	32256	28885	20806							
	---	5	350	4.50	24	44601	42163	41429	40607	38293	35477	32504	21899						
			363	5.00	25	46258	43931	43244	42491	40507	37775	35122	27071						
			375	5.50	26	47787	45554	44904	44199	42457	39917	37351	31800						
Level 3 Performance		Max RPM C3 = 955 C6 = 850 Z5 = 685			Max Motor Frame Size = 256T														
C3 Cast Aluminum	10	2	681	2.20	24	29606	26546	25526											
			20	536	2.20	19.9	32018	28306	27259	26137									
			25	493	2.20	17.3	31847	26823	25451	23912									
	10	3	779	3.30	30	33867	31309	30558	29698	27880	26326	24833							
			20	614	3.31	24	36677	33507	32645	31747	29811	27595	25161						
			25	564	3.30	21	36433	32025	30953	29779	27129								
	10	5	924	5.50	38	40171	38082	37509	36912	35559	34012	32554	30648	27153					
			20	728	5.51	32	43487	40865	40170	39458	37976	36396	34677	31770	26070				
			25	669	5.50	28	43216	39405	38535	37660	35768	33684	31082						
	10	7 1/2	955	6.07	41	41518	39507	38959	38390	37136	35669	34195	32291	29119	25310				
			20	833	8.26	40	49759	47492	46901	46298	45058	43768	42416	40233	36030	31247			
			25	766	8.26	35	49482	46090	45306	44543	43016	41380	39608	36560					
20	10	917	11.02	47	54777	52730	52200	51662	50561	49426	48252	46403	42978	39041	34688				
		843	11.00	40	54456	51348	50610	49900	48515	47119	45628	43200							
C6 Cast Aluminum	10	2	549	2.21	24	28415	25829	25166											
			20	439	2.20	18.9	31425	28185	27424	26643	24771								
			25	401	2.20	17.2	32111	28770	27607	26416									
	10	3	628	3.30	29	32504	30251	29680	29103	27934	26766	25635							
			20	503	3.30	24	36006	33144	32462	31797	30440	28852	26877						
			25	460	3.31	22	36836	34080	33246	32277	30201	28383	26502						
	10	5	744	5.49	39	38508	36613	36134	35654	34685	33701	32712	31240	28898	26180				
			20	596	5.50	32	42663	40237	39638	39047	37913	36787	35597	33420	29434	25559			
			25	545	5.51	29	43642	41400	40776	40120	38602	36836	35171	32897	28308				
	10	7 1/2	850	8.19	49	43994	42339	41921	41503	40662	39815	38957	37660	35514	33472	31283	25508		
			20	682	8.24	40	48819	46694	46168	45644	44609	43616	42638	41118	37981	34415	31339		
			25	623	8.23	36	49888	47964	47445	46907	45767	44455	42944	40673	37335	33416			
15	10	833	11.03	58	50828	49130	48709	48288	47451	46619	45804	44606	42584	40352	37873	33176			
		20	751	11.00	49	53758	51826	51346	50869	49918	48985	48085	46751	44371	41320	38078	31935		
		25	687	11.04	42	55013	53287	52828	52357	51373	50320	49125	47066	43766	40746	37170			
Z5 Fabricated Steel	30	1 1/2	398	1.65	17.9	28796	26269	25554	24794										
			45	303	1.66	15.6	32335	27976	26696	25211									
	30	2	438	2.20	20	31690	29430	28811	28160	26756	25251								
			45	333	2.20	18.1	35536	31623	30561	29389	26497								
	30	3	502	3.31	26	36321	34382	33865	33332	32205	30988	29696	27658						
			45	381	3.29	23	40658	37279	36394	35482	33464	31014							
	30	5	595	5.51	33	43049	41438	41017	40587	39702	38773	37791	36219	33416	30110				
			45	452	5.50	30	48235	45427	44692	43952	42441	40827	38992	35612					
	40	7 1/2	553	8.25	37	54361	52204	51655	51102	49987	48886	47780	46035	42391	37248				
			45	517	8.23	37	55172	52737	52107	51469	50175	48858	47484	45187	40258				
	35	10	672	11.00	45	56980	55560	55193	54820	54059	53272	52459	51177	48837	46249	43363	36164		
			40	609	11.02	43	59866	57912	57416	56918	55912	54900	53900	52391	49644	46087	41376		
45	570	11.03	42	60827	58630	58065	57494	56331	55155	53961	52084	48450	43501						

NOTES:

1. Performance certified is for installation type A: Free inlet, free outlet.
2. Power rating (BHP) does not include transmission losses.
3. Performance ratings do not include the effects of appurtenances (accessories) in the airstream.
4. The sound ratings shown are loudness values in fan sones at 5 ft. (1.5m) in a hemispherical free field calculated per AMCA Standard 301. Values are for installation Type A: Free inlet hemispherical sone levels.

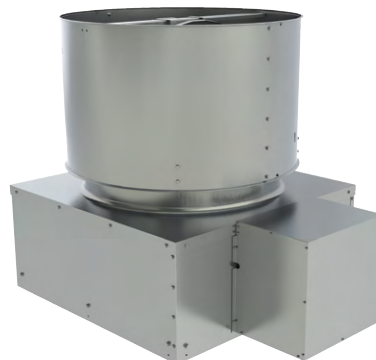
Belt Driven, LUBMO/LUBSH

21 LUBMO/LUBSH

MODEL INFO		MOTOR HP	FAN RPM	MAX BHP	SONES @ 0" SP	CFM/STATIC PRESSURE (IN. W.G.)												
PROPELLER	BLADE ANGLE					0.000	0.100	0.125	0.150	0.200	0.250	0.300	0.375	0.500	0.625	0.750	1.000	
Level 1 Performance		Max RPM L1 = 989				Max Motor Frame Size = 56						Outlet Area (ft²) = 2.463						
L1 Fabricated Steel	---	1/4	730	0.22	9.8	4039	3447	3239										
			762	0.25	10.4	4217	3670	3470	3265									
			786	0.28	11.1	4349	3835	3641	3447									
	---	1/3	813	0.30	11.3	4499	4016	3831	3645	3216								
			838	0.33	12.0	4637	4179	4007	3825	3434								
			866	0.37	12.5	4792	4359	4200	4023	3662	3205							
---	1/2	915	0.43	14.1	5063	4667	4529	4369	4035	3649								
		960	0.50	15.0	5312	4943	4822	4679	4362	4029	3622							
		991	0.55	16.0	5484	5130	5018	4887	4582									
Level 2 Performance		Max RPM L2 = 1133				Max Motor Frame Size = 145T						Outlet Area (ft²) = 2.463						
L2 Fabricated Steel	---	1/2	915	0.43	14.1	5063	4667	4529	4369	4035	3649							
			960	0.50	15.0	5312	4943	4822	4679	4362	4029	3622						
			991	0.55	16.0	5484	5130	5018	4887	4582	4271	3898						
	---	3/4	1048	0.65	17.1	5799	5470	5372	5259	4985	4694	4384						
			1099	0.75	18.7	6081	5771	5681	5581	5338	5060	4781	4281					
			1134	0.83	19.9	6275	5977	5891	5798	5574	5307	5040						
Level 3 Performance		Max RPM B105 = 1890		E4 = 1890		E8 = 1280		Max Motor Frame Size = 145T						Outlet Area (ft²) = 2.463				
B105 Cast Aluminum	20	1/4	1142	0.27	14.5	3367	3123	3056	2986	2838	2677	2487	2223					
			1048	0.27	12.5	3620	3325	3242	3154	2965	2751	2514	2169					
			977	0.27	11.7	3803	3433	3325	3210	2964	2672	2357						
	25	1/3	1252	0.36	16.7	3691	3472	3413	3351	3222	3084	2936	2673	2277				
			1150	0.35	14.8	3972	3708	3635	3559	3396	3220	3023	2703					
			1072	0.36	13.9	4172	3843	3749	3650	3438	3206	2938	2503					
	20	1/2	1438	0.54	21	4240	4052	4002	3951	3844	3732	3615	3427	3054	2716			
			1320	0.54	18.7	4560	4334	4273	4211	4079	3938	3788	3546	3082				
			1231	0.55	17.4	4791	4511	4435	4354	4184	4000	3806	3472	2844				
	20	3/4	1646	0.80	25	4853	4690	4648	4605	4516	4423	4327	4176	3903	3580	3270		
			1511	0.82	23	5219	5025	4974	4921	4812	4697	4577	4385	4032	3620	3227		
			1409	0.82	22	5484	5244	5179	5113	4974	4826	4668	4418	3938	3395			
E4 Cast Aluminum	20	1/4	1307	0.27	14.2	3844	3532	3449	3364	3186								
			1115	0.27	13.0	4246	3844	3741	3635	3401	3135							
			1042	0.27	12.5	4352	3914	3770	3627	3372	3088							
	20	1/3	1440	0.37	17.2	4235	3954	3881	3805	3649	3486	3317	3033					
			1227	0.37	15.4	4672	4308	4216	4122	3926	3707	3464	3033					
			1146	0.37	14.5	4786	4405	4284	4152	3901	3671	3410						
	20	1/2	1648	0.55	21	4847	4604	4541	4477	4346	4210	4069	3850	3436				
			1405	0.55	19.5	5350	5033	4953	4872	4709	4539	4354	4048	3425				
			1312	0.55	18.2	5479	5159	5067	4965	4738	4516	4315	3996	3222				
	20	3/4	1887	0.82	27	5550	5339	5285	5230	5119	5004	4887	4704	4386	4037	3540		
			1609	0.82	22	6127	5851	5781	5711	5571	5429	5283	5048	4604	4073	3297		
			1503	0.82	21	6277	6003	5929	5851	5676	5479	5278	5008	4544	3895			
E8 Cast Aluminum	32	1/4	885	0.27	11.0	4020	3688	3603	3515	3320	3048							
		1/3	974	0.37	12.8	4424	4125	4047	3969	3808	3621	3370						
		1/2	1113	0.55	15.9	5056	4796	4729	4660	4525	4384	4231	3933	3280				
		3/4	1277	0.82	19.7	5801	5576	5518	5460	5341	5223	5103	4910	4486	3928			

NOTES:

1. Performance certified is for installation type A: Free inlet, free outlet.
2. Power rating (BHP) does not include transmission losses.
3. Performance ratings do not include the effects of appurtenances (accessories) in the airstream.
4. The sound ratings shown are loudness values in fan sones at 5 ft. (1.5m) in a hemispherical free field calculated per AMCA Standard 301. Values are for installation Type A: Free inlet hemispherical sone levels.
5. E4, E8 and B propellers are only available on model LUBMO. Model LUBSH must use steel propellers.
6. LUBSH butterfly damper blades are constructed of steel and require a minimum outlet velocity of 1700 FPM to open fully. Not all selections above are valid for this model.



LUBMO (with Motor Out of the Airstream)

24 LUBMO/LUBSH

MODEL INFO		MOTOR HP	FAN RPM	MAX BHP	SONES @ 0" SP	CFM/STATIC PRESSURE (IN. W.G.)												
PROPELLER	BLADE ANGLE					0.000	0.100	0.125	0.150	0.200	0.250	0.300	0.375	0.500	0.625	0.750	1.000	
Level 1 Performance		Max RPM L1 = 907			Max Motor Frame Size = 56							Outlet Area (ft ²) = 3.207						
L1 Fabricated Steel	---	1/4	585 610 630	0.22 0.25 0.28	8.7 9.3 9.9	4831 5038 5203	4197 4408	4133										
	---	1/3	652 672 694	0.30 0.33 0.37	10.6 10.8 11.4	5385 5550 5732	4639 4846 5070	4373 4587 4819	4091 4324 4570									
	---	1/2	733 769 794	0.43 0.50 0.55	12.6 13.6 14.3	6054 6351 6558	5455 5799 6033	5229 5599 5849	4991 5372 5635	4481 4913 5195	4349 4678							
	---	3/4	839 880 907	0.65 0.75 0.83	15.5 17.0 18.0	6929 7268 7491	6445 6814 7054	6286 6673 6923	6098 6508 6770	5685 6119 6403	5249 5722 6021	4716 5258						
Level 2 Performance		Max RPM L2 = 989			Max Motor Frame Size = 145T							Outlet Area (ft ²) = 3.207						
L2 Fabricated Steel	---	1/2	733 769 794	0.43 0.50 0.55	12.6 13.6 14.3	6054 6351 6558	5455 5799 6033	5229 5599 5849	4991 5372 5635	4481 4913 5195	4349 4678							
	---	3/4	839 880 907	0.65 0.75 0.83	15.5 17.0 18.0	6929 7268 7491	6445 6814 7054	6286 6673 6923	6098 6508 6770	5685 6119 6403	5249 5722 6021	4716 5258 5603						
	---	1	940 969 986	0.91 1.00 1.10	19.1 19.2 20	7763 8003 8143	7346 7601 7750	7224 7485 7637	7085 7356 7514	6747 7044 7215	6377 6684 6863	5996 6325 6513	5300 5685 5906					
Level 3 Performance		Max RPM B105 = 1930			E4 = 1930		E8 = 1175		Z5 = 1450		Max Motor Frame Size = 145T				Outlet Area (ft ²) = 3.207			
B105 Cast Aluminum	20	1/2	1226	0.54	19.8	5299	5016	4940	4862	4699	4528	4347	4052	3508				
	25		1122	0.55	17.6	5675	5337	5245	5149	4948	4732	4503	4103	3396				
	30		1045	0.55	16.0	5941	5529	5414	5294	5038	4765	4467	3907					
	20	3/4	1403	0.82	24	6064	5819	5755	5690	5554	5412	5265	5032	4601	4121	3646		
	25		1285	0.82	21	6499	6209	6131	6052	5886	5711	5527	5233	4660	4054			
	30		1197	0.82	19.5	6805	6453	6357	6259	6050	5828	5594	5220	4418				
20	1	1544	1.07	27	6673	6453	6395	6337	6217	6092	5963	5762	5402	4990	4558			
25		1414	1.09	24	7151	6890	6821	6751	6605	6453	6293	6041	5586	5044	4493			
30		1317	1.10	22	7488	7170	7086	6999	6818	6626	6423	6103	5503	4732				
E4 Cast Aluminum	16	1/2	1531	0.55	18.1													
	24		1268	0.55	14.9	4294												
	32		1100	0.55	13.5	4594	4190	4059										
	16	3/4	1745	0.82	22	4485	4238	4174	4111	3981								
	24		1450	0.82	18.4	4911	4616	4544	4474	4337	4195	4033						
	32		1258	0.82	16.7	5254	4916	4817	4706	4465	4244	4036						
16	1	1926	1.10	26	4951	4727	4670	4613	4497	4379	4259	4078						
24		1600	1.10	21	5419	5151	5085	5019	4894	4770	4641	4419						
32		1388	1.10	19.4	5797	5497	5413	5323	5117	4899	4699	4415						
E8 Cast Aluminum	32	1/2	928	0.55	11.8	4215												
	32	3/4	1062	0.82	14.8	4824	4551	4480	4409	4266	4114							
	32	1	1171	1.10	17.0	5319	5073	5009	4945	4816	4685	4548	4304					
Z5 Fabricated Steel	30	1/3	1003	0.37	17.3	5075	4679	4587	4498	4315	4095							
	45		766	0.37	13.1	5578	4983	4823	4630	4010								
	30	1/2	1146	0.55	21	5799	5450	5365	5283	5126	4967	4788	4445					
	45		875	0.55	16.6	6372	5851	5721	5585	5255	4715							
	30	3/4	1310	0.82	25	6629	6322	6247	6172	6028	5890	5753	5531	5035	4226			
	45		1001	0.82	21	7290	6834	6720	6607	6371	6092	5683	4834					
30	1	1446	1.10	30	7317	7038	6970	6901	6766	6637	6513	6326	5970	5488	4756			
45		1104	1.10	24	8040	7629	7524	7420	7214	6996	6743	6174						

NOTES:

- Performance certified is for installation type A: Free inlet, free outlet.
- Power rating (BHP) does not include transmission losses.
- Performance ratings do not include the effects of appurtenances (accessories) in the airstream.
- The sound ratings shown are loudness values in fan sones at 5 ft. (1.5m) in a hemispherical free field calculated per AMCA Standard 301. Values are for installation Type A: Free inlet hemispherical sone levels.
- E4, E8 and B propellers are only available on model LUBMO. Model LUBSH must use steel propellers.
- LUBSH butterfly damper blades are constructed of steel and require a minimum outlet velocity of 1700 FPM to open fully. Not all selections above are valid for this model.

Belt Driven, LUBMO/LUBSH

30 LUBMO/LUBSH

MODEL INFO		MOTOR HP	FAN RPM	MAX BHP	SONES @ 0" SP	CFM/STATIC PRESSURE (IN. W.G.)														
PROPELLER	BLADE ANGLE					0.000	0.100	0.125	0.150	0.200	0.250	0.300	0.375	0.500	0.625	0.750	1.000			
Level 1 Performance		Max RPM L1 = 696				Max Motor Frame Size = 145T						Outlet Area (ft²) = 5.032								
L1 Fabricated Steel	---	1/4	403	0.20	7.1	6498														
			421	0.25	7.6	6789														
			434	0.28	7.9	6998														
	---	1/3	449	0.30	8.4	7240														
			463	0.33	8.9	7466														
			478	0.37	9.4	7708	6348													
	---	1/2	505	0.43	10.1	8143	6905	6476												
			530	0.50	11.0	8546	7416	7005	6581											
			547	0.55	11.7	8820	7756	7357	6959											
	---	3/4	578	0.65	12.7	9320	8359	7995	7620	6785										
607			0.75	14.1	9788	8905	8581	8220	7486	6557										
626			0.83	14.7	10094	9255	8956	8611	7912	7073										
---	1	648	0.91	15.6	10449	9653	9380	9060	8389	7631										
		668	1.00	17.0	10772	10010	9758	9461	8811	8122	7274									
		689	1.10	17.9	11110	10381	10148	9874	9247	8604	7830									
Level 2 Performance		Max RPM L2 = 866				Max Motor Frame Size = 184T						Outlet Area (ft²) = 5.032								
L2 Fabricated Steel	---	3/4	578	0.65	12.7	9320	8359	7995	7620	6785										
			607	0.75	14.1	9788	8905	8581	8220	7486	6557									
			626	0.83	14.7	10094	9255	8956	8611	7912	7073									
	---	1	648	0.91	15.6	10449	9653	9380	9060	8389	7631									
			668	1.00	17.0	10772	10010	9758	9461	8811	8122	7274								
			689	1.10	17.9	11110	10381	10148	9874	9247	8604	7830								
	---	1 1/2	729	1.30	19.2	11755	11077	10873	10638	10070	9475	8831								
			764	1.50	21	12320	11681	11495	11286	10778	10208	9631	8593							
			789	1.65	22	12723	12109	11933	11739	11273	10723	10175	9227							
	---	2	816	1.83	23	13158	12568	12401	12222	11795	11278	10747	9896							
841			2.00	24	13561	12992	12833	12664	12269	11786	11266	10474								
868			2.20	25	13997	13449	13296	13136	12771	12325	11822	11071	9548							
Level 3 Performance		Max RPM B105 = 1565 E4 = 1565 E8 = 975 Z5 = 1295				Max Motor Frame Size = 184T						Outlet Area (ft²) = 5.032								
B105 Cast Aluminum	20	1/2	964	0.55	19.4	7935	7328	7164	6996	6645	6276	5873	5160							
			25	0.55	16.4	8363	7652	7456	7254	6829	6378	5804								
			30	0.55	15.1	8591	7755	7519	7272	6762	6094									
	20	3/4	1104	0.82	24	9087	8565	8426	8285	7992	7687	7370	6864	5836						
			25	0.82	21	9573	8963	8799	8630	8278	7909	7524	6845							
			30	0.82	18.3	9828	9115	8918	8714	8286	7840	7358	6002							
	20	1	1215	1.10	27	10001	9530	9407	9281	9022	8753	8476	8042	7236	6264					
			25	1.10	23	10542	9994	9849	9700	9391	9068	8732	8206	7065						
			30	1.10	22	10817	10178	10005	9827	9452	9058	8652	7964							
	20	1 1/2	1390	1.65	32	11441	11033	10928	10820	10601	10375	10143	9783	9153	8461	7647				
			25	1.65	28	12069	11596	11472	11346	11087	10818	10539	10104	9340	8374	7106				
			30	1.65	26	12387	11837	11691	11542	11232	10906	10567	10039	9028						
	20	2	1530	2.20	36	12594	12225	12130	12034	11838	11638	11432	11115	10564	9984	9353	7830			
			25	2.20	31	13279	12851	12740	12628	12398	12160	11915	11534	10867	10159	9268				
			30	2.20	30	13634	13138	13008	12876	12603	12318	12022	11558	10754	9726					
	20	3	1752	3.29	45	14421	14101	14019	13936	13769	13598	13424	13157	12697	12217	11718	10630			
			25	3.29	38	15199	14828	14733	14636	14440	14240	14034	13716	13163	12582	11978	10481			
			30	3.30	35	15602	15172	15061	14948	14718	14480	14234	13850	13177	12474	11725				

NOTES:

1. Performance certified is for installation type A: Free inlet, free outlet.
2. Power rating (BHP) does not include transmission losses.
3. Performance ratings do not include the effects of appurtenances (accessories) in the airstream.
4. The sound ratings shown are loudness values in fan sones at 5 ft. (1.5m) in a hemispherical free field calculated per AMCA Standard 301. Values are for installation Type A: Free inlet hemispherical sone levels.
5. E4, E8 and B propellers are only available on model LUBMO. Model LUBSH must use steel propellers.
6. LUBSH butterfly damper blades are constructed of steel and require a minimum outlet velocity of 1700 FPM to open fully. Not all selections above are valid for this model.

30 LUBMO/LUBSH (cont.)

MODEL INFO		MOTOR HP	FAN RPM	MAX BHP	SONES @ 0" SP	CFM/STATIC PRESSURE (IN. W.G.)													
PROPELLER	BLADE ANGLE					0.000	0.100	0.125	0.150	0.200	0.250	0.300	0.375	0.500	0.625	0.750	1.000		
Level 3 Performance			Max RPM	E4 = 1565	E8 = 975	Z5 = 1295	Max Motor Frame Size = 184T						Outlet Area (ft²) = 5.032						
E4 Cast Aluminum	16	1/2	981	0.55	21	7151	6614	6472	6325										
	24		824	0.55	16.6	7977	7284	7104	6921	6520									
	32		714	0.55	13.5	8428	7551	7298	7031	6464									
	16	3/4	1122	0.82	26	8178	7715	7594	7470	7214	6947	6662	6195						
			24	942	0.82	21	9119	8518	8362	8206	7886	7539	7145	6444					
			32	817	0.82	16.8	9644	8899	8691	8473	8011	7520	6949						
	24	1	1238	1.10	31	9024	8607	8498	8388	8163	7930	7687	7298	6563					
			24	1040	1.10	24	10067	9526	9386	9245	8962	8669	8354	7817	6664				
			32	901	1.10	19.4	10635	9970	9789	9600	9201	8776	8331	7536					
	16	1 1/2	1417	1.65	40	10329	9967	9874	9780	9588	9391	9189	8876	8312	7680	6899			
			24	1191	1.65	31	11529	11059	10939	10817	10571	10324	10072	9672	8897	7923			
			32	1032	1.65	25	12182	11609	11457	11301	10975	10628	10262	9690	8537	6748			
24	2	1560	2.20	45	11371	11044	10960	10875	10704	10528	10350	10074	9592	9068	8492				
		24	1311	2.20	38	12691	12265	12157	12047	11826	11602	11378	11033	10407	9672	8781			
		32	1136	2.20	30	13409	12893	12758	12620	12334	12033	11717	11219	10332	9180	7582			
28	3	1501	3.30	50	14530	14160	14066	13971	13780	13587	13392	13098	12597	12057	11447	9933			
		28	1391	3.30	44	15000	14596	14493	14388	14176	13959	13737	13394	12792	12147	11458	9474		
		32	1301	3.30	41	15357	14910	14794	14677	14437	14189	13930	13523	12799	12033	11154			
E8 Cast Aluminum	32	1/2	613	0.55	14.0	7920	7370	7197	6988	6452									
	32	3/4	701	0.82	17.8	9057	8595	8460	8315	7959	7492	6930							
	32	1	773	1.10	20	9987	9577	9461	9340	9068	8725	8298	7522	6310					
	32	1 1/2	884	1.64	24	11422	11070	10974	10875	10664	10430	10152	9625	8504	7463				
Z5 Fabricated Steel	35	1/2	813	0.55	17.2	8288	7636	7450	7249	6812	6329								
	45		680	0.55	13.9	8758	7784	7522	7234	6560									
	35	3/4	929	0.82	21	9470	8913	8761	8601	8253	7872	7465	6752						
	45		778	0.82	17.1	10020	9175	8958	8734	8239	7675								
	35	1	1025	1.10	25	10449	9951	9817	9679	9384	9063	8717	8160	6995					
	45		858	1.10	20	11051	10286	10092	9896	9482	9022	8512							
	35	1 1/2	1174	1.65	31	11968	11539	11425	11310	11070	10814	10541	10099	9290	8305				
	45		983	1.65	25	12660	11997	11827	11658	11316	10958	10567	9933						
	35	2	1293	2.20	37	13181	12794	12693	12590	12379	12158	11926	11552	10868	10114	9212			
	45		1082	2.20	29	13936	13335	13181	13027	12720	12407	12081	11546	10508					
45	3	1239	3.30	36	15958	15435	15302	15169	14900	14631	14360	13940	13168	12296					

NOTES:

- Performance certified is for installation type A: Free inlet, free outlet.
- Power rating (BHP) does not include transmission losses.
- Performance ratings do not include the effects of appurtenances (accessories) in the airstream.
- The sound ratings shown are loudness values in fan sones at 5 ft. (1.5m) in a hemispherical free field calculated per AMCA Standard 301. Values are for installation Type A: Free inlet hemispherical sone levels.
- E4, E8 and B propellers are only available on model LUBMO. Model LUBSH must use steel propellers.
- LUBSH butterfly damper blades are constructed of steel and require a minimum outlet velocity of 1700 FPM to open fully. Not all selections above are valid for this model.



Belt Driven, LUBMO/LUBSH

36 LUBMO/LUBSH

MODEL INFO		MOTOR HP	FAN RPM	MAX BHP	SONES @ 0" SP	CFM/STATIC PRESSURE (IN. W.G.)													
PROPELLER	BLADE ANGLE					0.000	0.100	0.125	0.150	0.200	0.250	0.300	0.375	0.500	0.625	0.750	1.000		
Level 1 Performance		Max RPM L1 = 533				Max Motor Frame Size = 145T						Outlet Area (ft²) = 7.217							
L1 Fabricated Steel	---	1/2	381	0.45	10.2	10285	8228	7395	5609										
			395	0.50	10.8	10663	8730	8020	6608										
			407	0.55	11	10987	9154	8494	7485										
	---	3/4	436	0.68	12.4	11769	10184	9560	8919	6178									
			452	0.75	13.2	12201	10741	10127	9538	7349									
			466	0.83	14	12579	11214	10623	10054	8353									
---	1	480	0.90	14.8	12957	11674	11121	10557	9254	6322									
		497	1.00	15.5	13416	12218	11720	11159	10035	7622									
		513	1.10	16.4	13848	12717	12271	11726	10674	8740									
Level 2 Performance		Max RPM L2 = 671				Max Motor Frame Size = 184T						Outlet Area (ft²) = 7.217							
L2 Fabricated Steel	---	1	480	0.90	14.8	12957.0	11674.0	11121.0	10557.0	9254.0	6322.0								
			497	1.00	15.5	13416	12218	11720	11159	10035	7622								
			513	1.10	16.4	13848	12716	12269	11726	10674	8740								
	---	1 1/2	549	1.35	18.5	14820	13805	13449	12997	12003	10935	8679							
			569	1.50	19.5	15360	14395	14076	13677	12713	11758	10099							
			587	1.65	20	15846	14921	14629	14270	13350	12443	11287	7673						
---	2	605	1.80	21	16331	15443	15172	14847	13991	13103	12135	9062							
		626	2.00	23	16898	16048	15795	15503	14732	13854	12985	10546							
		646	2.20	23	17438	16622	16382	16115	15421	14561	13741	12004							
Level 3 Performance		Max RPM B206 = 1395 E4 = 1395 E8 = 915 Z5 = 1095				Max Motor Frame Size = 185T						Outlet Area (ft²) = 7.217							
B206 Cast Aluminum	20	1/2	964	0.55	19.4	7935	7328	7164	6996	6645	6276	5873	5160						
			25	0.55	16.4	8363	7652	7456	7254	6829	6378	5804							
			30	0.55	15.1	8591	7755	7519	7272	6762	6094								
	25	3/4	1104	0.82	24	9087	8565	8426	8285	7992	7687	7370	6864	5836					
			25	0.82	21	9573	8963	8799	8630	8278	7909	7524	6845						
			30	0.82	18.3	9828	9115	8918	8714	8286	7840	7358	6602						
	20	1	1215	1.10	27	10001	9530	9407	9281	9022	8753	8476	8042	7236	6264				
			25	1.10	23	10542	9994	9849	9700	9391	9068	8732	8206	7065					
			30	1.10	22	10817	10178	10005	9827	9452	9058	8652	7964						
	20	1 1/2	1390	1.65	32	11441	11033	10928	10820	10601	10375	10143	9783	9153	8461	7647			
			25	1.65	28	12069	11596	11472	11346	11087	10818	10539	10104	9340	8374	7106			
			30	1.65	26	12387	11837	11691	11542	11232	10906	10567	10309	9828					
	20	2	1530	2.20	36	12594	12225	12130	12034	11838	11638	11432	11115	10564	9984	9353	7830		
			25	2.20	31	13279	12851	12740	12628	12398	12160	11915	11534	10867	10159	9268			
			30	2.20	30	13634	13138	13008	12876	12603	12318	12022	11558	10754	9726				
	20	3	1752	3.29	45	14421	14101	14019	13936	13769	13598	13424	13157	12697	12217	11718	10630		
			25	3.29	38	15199	14828	14733	14636	14440	14240	14034	13716	13163	12582	11978	10481		
			30	3.30	35	15602	15172	15061	14948	14718	14480	14234	13850	13177	12474	11725			
E4 Cast Aluminum	20	3/4	814	0.82	22	10264	9297	9055	8809										
			28	0.82	22	12369	11293	10979	10647	9974	9288								
			32	0.82	21	12594	11390	11057	10706	9926	9012								
	20	1	964	1.10	28	12156	11341	11135	10930	10519	10088	9616	8829						
			28	1.10	25	13648	12692	12425	12140	11535	10926	10305	9164						
			32	1.10	25	13882	12806	12514	12212	11564	10834	10001							
	20	1 1/2	1105	1.65	36	13934	13225	13045	12866	12508	12151	11783	11185	10050					
			28	1.65	28	15617	14797	14576	14347	13854	13326	12791	11991	10344					
			32	1.65	28	15908	14982	14737	14485	13961	13400	12788	11748	9520					
	20	2	1215	2.20	42	15321	14677	14514	14351	14025	13700	13375	12871	11935	10865				
			28	2.20	32	17216	16479	16284	16084	15663	15207	14728	14001	12760	11145				
			32	2.20	31	17509	16676	16457	16234	15773	15291	14779	13940	12287	10001				
	20	3	1392	3.30	56	17553	16992	16850	16709	16424	16139	15855	15431	14699	13889	12993			
			28	3.30	39	19706	19069	18903	18734	18386	18021	17631	17012	15954	14884	13613			
			32	3.30	37	20050	19329	19142	18952	18563	18162	17747	17092	15876	14455	12742			
	28	5	1389	5.50	53	23375	22843	22706	22568	22285	21996	21697	21226	20375	19481	18596			
			32	5.50	48	23769	23166	23011	22854	22537	22212	21880	21368	20467	19486	18392			

NOTES:

- Performance certified is for installation type A: Free inlet, free outlet.
- Power rating (BHP) does not include transmission losses.
- Performance ratings do not include the effects of appurtenances (accessories) in the airstream.
- The sound ratings shown are loudness values in fan sones at 5 ft. (1.5m) in a hemispherical free field calculated per AMCA Standard 301. Values are for installation Type A: Free inlet hemispherical sone levels.
- E4, E8 and B propellers are only available on model LUBMO. Model LUBSH must use steel propellers.
- LUBSH butterfly damper blades are constructed of steel and require a minimum outlet velocity of 1700 FPM to open fully. Not all selections above are valid for this model.

36 LUBMO/LUBSH (cont.)

MODEL INFO		MOTOR HP	FAN RPM	MAX BHP	SONES @ 0" SP	CFM/STATIC PRESSURE (IN. W.G.)												
PROPELLER	BLADE ANGLE					0.000	0.100	0.125	0.150	0.200	0.250	0.300	0.375	0.500	0.625	0.750	1.000	
Level 3 Performance		Max RPM E4 = 1395 E8 = 915 Z5 = 1095			Max Motor Frame Size = 185T						Outlet Area (ft²) = 7.217							
E8 Cast Aluminum	32	3/4	573	0.82	17.9	11748	10847	10595	10330	9740	9013							
	32	1	632	1.10	22	12958	12154	11934	11705	11216	10664	10002						
	32	1 1/2	724	1.65	27	14844	14154	13970	13780	13384	12960	12498	11691	9830				
	32	2	797	2.20	31	16341	15719	15555	15388	15041	14676	14290	13656	12339	10484			
	32	3	912	3.30	36	18699	18161	18021	17879	17587	17285	16971	16475	15556	14431	12995		
Z5 Fabricated Steel	35	3/4	686	0.82	18.5	12082	11158	10894	10611	9995	9318							
	45		574	0.82	14.8	12770	11389	11019	10614	9691								
	35	1	757	1.10	21	13332	12509	12283	12043	11523	10954	10340	9238					
	45		634	1.10	17.1	14105	12861	12540	12205	11464	10572							
	35	1 1/2	867	1.65	27	15270	14564	14375	14180	13765	13314	12829	12048	10459				
	45		726	1.65	21	16152	15070	14795	14517	13936	13292	12589						
	35	2	954	2.20	31	16802	16167	15999	15827	15468	15085	14673	14008	12785	11229			
	45		799	2.20	25	17776	16796	16546	16296	15788	15251	14662	13686					
	35	3	1093	3.30	39	19250	18701	18558	18413	18114	17802	17475	16949	15987	14934	13697		
	45		915	3.30	31	20357	19505	19288	19070	18634	18191	17733	16984	15564				
45	5	1085	5.50	41	24139	23425	23243	23061	22693	22326	21957	21392	20380	19258	17834			

42 LUBMO/LUBSH

MODEL INFO		MOTOR HP	FAN RPM	MAX BHP	SONES @ 0" SP	CFM/STATIC PRESSURE (IN. W.G.)												
PROPELLER	BLADE ANGLE					0.000	0.100	0.125	0.150	0.200	0.250	0.300	0.375	0.500	0.625	0.750	1.000	
Level 1 Performance		Max RPM L1 = 411			Max Motor Frame Size = 145T						Outlet Area (ft²) = 9.794							
L1 Fabricated Steel	---	1/2	295	0.45	8.8	12686	9296	6663										
			305	0.50	9.4	13116	9967	7852										
			315	0.55	9.8	13546	10583	9022										
		3/4	337	0.68	11.0	14492	11862	10885	8923									
			349	0.75	11.6	15008	12543	11640	10335									
			361	0.83	12.4	15524	13230	12353	11364									
	1	371	0.90	13.2	15954	13800	12932	12044	8159									
		385	1.00	14.1	16556	14580	13728	12913	9841									
		397	1.10	14.5	17072	14415	14413	13622	11233									
Level 2 Performance		Max RPM L2 = 703			Max Motor Frame Size = 184T						Outlet Area (ft²) = 9.794							
L2 Fabricated Steel	---	1	371	0.90	13.2	15954	13800	12932	12044	8159								
			385	1.00	14.1	16556	14580	13728	12913	9841								
			397	1.10	14.5	17072	15226	14413	13622	11233								
		1 1/2	425	1.35	15.9	18276	16666	16001	15223	13685	10371							
			440	1.50	17.0	18921	17406	16818	16081	14635	12081							
			454	1.65	18.0	19523	18082	17556	16880	15472	13687	9945						
		2	468	1.80	19.0	20125	18748	18273	17662	16284	14811	11647						
			484	2.00	20	20813	19500	19071	18530	17196	15870	13480						
			500	2.20	21	21501	20245	19852	19370	18106	16849	15238						
		3	535	2.70	24	23006	21856	21515	21127	20095	18878	17685	14345					
			555	3.00	25	23866	22768	22448	22097	21189	20014	18888	16664					
			572	3.30	26	24597	23539	23235	22906	22088	20988	19876	18055					
	5	635	4.50	30	27306	26373	26113	25840	25233	24460	23471	21962	18631	14570				
		657	5.00	32	28252	27356	27108	26849	26285	25596	24710	23221	20595	15716				
		679	5.50	33	29198	28335	28099	27852	27321	26703	25916	24470	22095	17216				
Level 3 Performance		Max RPM B304 = 965 E4 = 965 E8 = 660 Z5 = 870			Max Motor Frame Size = 215T						Outlet Area (ft²) = 9.794							
B304 Cast Aluminum	20	1	736	1.10	24	16038	14658	14275	13883	13089	12273	11438	10059					
	25		666	1.10	22	16412	14764	14311	13854	12923	11906	10792						
	30		610	1.10	19.8	16410	14466	13945	13417	12160	10667							
	20	1 1/2	842	1.65	30	18348	17169	16846	16514	15831	15137	14435	13344	11332				
	25		763	1.65	27	18803	17395	17011	16619	15822	15015	14148	12746					
	30		698	1.65	25	18777	17110	16661	16206	15284	14202	12933						
	20	2	927	2.20	35	20200	19144	18858	18565	17958	17334	16703	15744	14082	12118			
	25		839	2.20	31	20676	19413	19072	18722	18005	17280	16545	15357	13122				
	30		768	2.20	29	20660	19163	18762	18354	17526	16677	15683	13946					
	20	3	1061	3.30	44	23120	22162	21970	21723	21212	20683	20141	19316	17919	16471	14917		
	25		961	3.31	38	23682	22598	22309	22013	21405	20780	20147	19194	17476	15565			
	30		880	3.31	36	23673	22386	22045	21697	20986	20264	19538	18318	15820				
	20	5	1258	5.49	60	27412	26660	26462	26260	25847	25422	24984	24310	23155	21993	20785	18290	
	25		1139	5.50	52	28069	27170	26933	26692	26198	25690	25170	24375	23039	21635	20129	16350	
	30		1043	5.51	48	28058	26989	26709	26424	25843	25247	24642	23727	22110	20110	17869		

NOTES:

- Performance certified is for installation type A: Free inlet, free outlet.
- Power rating (BHP) does not include transmission losses.
- Performance ratings do not include the effects of appurtenances (accessories) in the airstream.
- The sound ratings shown are loudness values in fan sones at 5 ft. (1.5m) in a hemispherical free field calculated per AMCA Standard 301. Values are for installation Type A: Free inlet hemispherical sone levels.
- E4, E8 and B propellers are only available on model LUBMO. Model LUBSH must use steel propellers.
- LUBSH butterfly damper blades are constructed of steel and require a minimum outlet velocity of 1700 FPM to open fully. Not all selections above are valid for this model.

Belt Driven, LUBMO/LUBSH

42 LUBMO/LUBSH (cont.)

MODEL INFO		MOTOR HP	FAN RPM	MAX BHP	SONES @ 0" SP	CFM/STATIC PRESSURE (IN. W.G.)													
PROPELLER	BLADE ANGLE					0.000	0.100	0.125	0.150	0.200	0.250	0.300	0.375	0.500	0.625	0.750	1.000		
Level 3 Performance			Max RPM		E4 = 965	E8 = 660	Z5 = 870	Max Motor Frame Size = 215T							Outlet Area (ft ²) = 9.794				
E4 Cast Aluminum	20	1	668	1.10	20	15000	13702	13393	13085	12439									
	28		568	1.10	16.3	16328	14832	14417	13982	13066	12054								
	32		531	1.10	15.4	16710	15024	14540	14030	12934									
	20	1 1/2	766	1.65	25	17201	16062	15783	15512	14975	14418	13807	12792						
			28	651	1.65	20	18715	17434	17089	16732	15980	15183	14343	12750					
			32	608	1.65	19.4	19133	17699	17303	16887	16003	15056	13981						
	20	2	842	2.20	29	18908	17869	17612	17359	16868	16378	15870	15032	13372					
			28	716	2.20	24	20583	19430	19125	18811	18154	17461	16735	15577	12826				
			32	670	2.20	23	21085	19801	19454	19093	18331	17516	16655	15168					
	20	3	964	3.30	35	21647	20738	20513	20288	19845	19415	18989	18335	17124	15719	13746			
			28	820	3.30	29	23573	22577	22317	22053	21507	20936	20340	19402	17721	15399			
			32	766	3.29	28	24106	22998	22705	22406	21778	21114	20414	19306	17138	14034			
32	5	909	5.50	36	28606	27684	27445	27202	26703	26184	25643	24790	23268	21594	19460				
E8 Cast Aluminum	32	1	453	1.10	13.4	15688	14579	14238	13840	12867									
	32	1 1/2	519	1.65	17.4	17973	17040	16773	16487	15809	14968	13978	12307						
	32	2	572	2.20	21	19809	18977	18747	18504	17970	17325	16557	15183	12730					
	32	3	653	3.30	26	22614	21899	21707	21507	21085	20622	20088	19127	17122	14984				
Z5 Fabricated Steel	30	1	602	1.10	20	15319	14188	13900	13614	13024	12366								
	45		466	1.10	19.4	17165	15305	14775	14170	12561									
	30	1 1/2	690	1.65	25	17559	16577	16326	16075	15574	15062	14514	13576						
	45		534	1.65	24	19670	18077	17649	17200	16167	14802	12961							
	30	2	759	2.20	28	19315	18425	18198	17970	17514	17058	16592	15837	14334	12037				
	45		588	2.20	27	21659	20227	19848	19459	18626	17639	16387							
	30	3	869	3.30	35	22114	21339	21143	20946	20548	20148	19751	19148	18052	16766	15087			
	45		673	3.30	33	24790	23554	23229	22900	22223	21502	20694	19184	18052	16766	15087			
	40	5	848	5.49	41	28895	27974	27740	27503	27026	26551	26076	25346	23973	22149	19767			
	45		798	5.50	42	29394	28365	28098	27827	27275	26712	26129	25190	23259	20614				

48 LUBMO/LUBSH

MODEL INFO		MOTOR HP	FAN RPM	MAX BHP	SONES @ 0" SP	CFM/STATIC PRESSURE (IN. W.G.)												
PROPELLER	BLADE ANGLE					0.000	0.100	0.125	0.150	0.200	0.250	0.300	0.375	0.500	0.625	0.750	1.000	
Level 1 Performance			Max RPM		L1 = 330	Max Motor Frame Size = 145T							Outlet Area (ft ²) = 12.764					
L1 Fabricated Steel	---	3/4	270	0.68	10	17351	13340	10817										
			280	0.75	10.6	17993	14240	12561	9049									
			289	0.83	11.1	18572	15023	13655	10702									
	---	1	297	0.90	11.7	19086	15707	14456	12061									
			308	1.00	12.4	19793	16645	15472	13940									
			318	1.10	13.2	20435	17506	16354	15106									
Level 2 Performance			Max RPM		L2 = 564	Max Motor Frame Size = 184T							Outlet Area (ft ²) = 12.764					
L2 Fabricated Steel	---	1	297	0.90	11.7	19086	15707	14456	12061									
			308	1.00	12.4	19793	16645	15472	13940									
			318	1.10	13.2	20435	17504	16354	15106									
	---	1 1/2	340	1.35	14.5	21849	19340	18236	17182	13431								
			352	1.50	15.1	22620	20294	19267	18231	15557								
			364	1.65	15.9	23391	21216	20290	19258	17104	12160							
	---	2	375	1.80	16.9	24098	22039	21205	20195	18221	14148							
			388	2.00	18	24934	22990	22253	21312	19428	16418							
			400	2.20	19.1	25705	23852	23189	22332	20491	18311	13556						
	---	3	429	2.70	21	27568	25890	25355	24689	22976	21285	18703						
			444	3.00	23	28532	26929	26438	25847	24263	22628	20750	14552					
			458	3.30	24	29432	27893	27431	26897	25459	23843	22192	17106					
	---	5	508	4.50	27	32645	31293	30906	30491	29488	28120	26658	24413	15903				
			526	5.00	29	33802	32506	32139	31749	30846	29632	28190	26122	19249				
			543	5.50	31	34894	33646	33297	32927	32098	31019	29649	27645	22155				

NOTES:

1. Performance certified is for installation type A: Free inlet, free outlet.
2. Power rating (BHP) does not include transmission losses.
3. Performance ratings do not include the effects of appurtenances (accessories) in the airstream.
4. The sound ratings shown are loudness values in fan sones at 5 ft. (1.5m) in a hemispherical free field calculated per AMCA Standard 301. Values are for installation Type A: Free inlet hemispherical sone levels.
5. E4, E8 and B propellers are only available on model LUBMO. Model LUBSH must use steel propellers.
6. LUBSH butterfly damper blades are constructed of steel and require a minimum outlet velocity of 1700 FPM to open fully. Not all selections above are valid for this model.

48 LUBMO/LUBSH (cont.)

MODEL INFO		MOTOR HP	FAN RPM	MAX BHP	SONES @ 0" SP	CFM/STATIC PRESSURE (IN. W.G.)												
PROPELLER	BLADE ANGLE					0.000	0.100	0.125	0.150	0.200	0.250	0.300	0.375	0.500	0.625	0.750	1.000	
Level 3 Performance			Max RPM	B304 = 1025	E4 = 1025	E8 = 670	Z5 = 805		Max Motor	Frame Size = 215T	Outlet Area (ft ²) = 12.764							
B304 Cast Aluminum	20	1 1/2	738	1.64	29	22597	21007	20570	20111	19141	18134	17119	15580					
	25		662	1.64	26	23071	21168	20636	20079	18918	17734	16437	14170					
	30		598	1.62	23	22871	20580	19938	19272	17887	16075	13583						
	2	20	812	2.20	34	24863	23436	23052	22654	21810	20917	20001	18612	16271				
		25	729	2.19	30	25406	23705	23240	22755	21735	20673	19598	17824					
		30	658	2.16	27	25166	23119	22555	21971	20749	19474	17799						
	3	20	929	3.29	42	28446	27215	26890	26558	25866	25131	24361	23166	21141	19112	16616		
		25	834	3.28	36	29065	27601	27212	26811	25969	25080	24159	22757	20190	16871			
		30	754	3.25	34	28837	27084	26613	26127	25113	24051	22955	21037					
	5	20	1102	5.51	57	33743	32718	32452	32182	31629	31056	30457	29514	27855	26168	24432	20824	
		25	989	5.47	50	34467	33250	32932	32609	31943	31247	30519	29381	27418	25353	23049		
		30	893	5.39	44	34153	32697	32315	31924	31116	30273	29398	28037	25579	21810			
7 1/2	20	1261	8.20	72	38612	37722	37493	37262	36791	36309	35814	35041	33671	32224	30748	27742		
	25	1132	8.21	64	39450	38395	38123	37847	37284	36704	36104	35165	33511	31795	30051	26079		
	30	1023	8.11	57	39125	37866	37539	37207	36528	35825	35098	33967	31992	29909	26996			
E4 Cast Aluminum	20	1 1/2	684	1.65	28	20417	18887	18503	18120	17338	16489	15552						
	28		575	1.65	24	22898	21081	20560	20006	18860	17719	16452						
	32		535	1.65	22	23303	21267	20709	20126	18851	17380	15665						
	2	20	753	2.20	33	22477	21090	20739	20390	19693	18975	18200	16916					
		28	633	2.20	29	25208	23585	23138	22663	21647	20606	19570	17810					
		32	589	2.20	26	25656	23829	23338	22831	21755	20563	19221	16848					
	3	20	862	3.30	40	25730	24522	24217	23910	23300	22692	22074	21089	19228	17063			
		28	725	3.30	37	28872	27478	27106	26723	25901	25017	24106	22754	20206	16497			
		32	674	3.30	35	29358	27783	27368	26943	26061	25126	24120	22431	18995				
	5	20	1022	5.50	54	30506	29489	29233	28976	28461	27944	27431	26660	25315	23814	22148		
		28	859	5.49	45	34208	33049	32746	32437	31801	31126	30407	29272	27362	25379	22909		
		32	800	5.51	45	34846	33536	33196	32850	32143	31412	30652	29448	27189	24532	21228		
7 1/2	28	984	8.25	53	39186	38182	37923	37660	37123	36569	35992	35071	33425	31756	30078	25927		
	32	915	8.25	53	39855	38718	38425	38129	37527	36909	36276	35294	33542	31588	29376	23729		
E8 Cast Aluminum	32	1 1/2	448	1.65	20	21766	20239	19817	19375	18411	17275	15849						
	32	2	493	2.19	23	23952	22584	22214	21829	21014	20113	19073	17100					
	32	3	565	3.30	30	27450	26274	25963	25643	24977	24270	23511	22227	19398				
	32	5	670	5.51	42	32551	31573	31319	31060	30528	29975	29400	28488	26779	24636	21850		
Z5 Fabricated Steel	35	1 1/2	537	1.65	21	22411	20849	20411	19944	18926	17816	16569						
	45		449	1.65	17.1	23666	21319	20702	20041	18575								
	35	2	591	2.20	25	24664	23267	22886	22487	21623	20678	19667	17941					
	45		495	2.20	20	26091	23970	23427	22867	21640	20270							
	35	3	676	3.29	30	28212	27009	26689	26360	25667	24917	24110	22813	20305				
	45		566	3.30	24	29833	27985	27516	27044	26069	25003	23855						
	35	5	802	5.50	40	33470	32471	32210	31945	31398	30827	30224	29254	27481	25519	23149		
	45		671	5.49	32	35367	33819	33423	33027	32234	31425	30580	29191	26437				
45	7 1/2	768	8.23	40	40480	39133	38791	38446	37753	37061	36360	35272	33265	30969				

NOTES:

- Performance certified is for installation type A: Free inlet, free outlet.
- Power rating (BHP) does not include transmission losses.
- Performance ratings do not include the effects of appurtenances (accessories) in the airstream.
- The sound ratings shown are loudness values in fan sones at 5 ft. (1.5m) in a hemispherical free field calculated per AMCA Standard 301. Values are for installation Type A: Free inlet hemispherical sone levels.
- E4, E8 and B propellers are only available on model LUBMO. Model LUBSH must use steel propellers.
- LUBSH butterfly damper blades are constructed of steel and require a minimum outlet velocity of 1700 FPM to open fully. Not all selections above are valid for this model.



Belt Driven, LUBMO/LUBSH

54 LUBMO/LUBSH

MODEL INFO		MOTOR HP	FAN RPM	MAX BHP	SONES @ 0" SP	CFM/STATIC PRESSURE (IN. W.G.)												
PROPELLER	BLADE ANGLE					0.000	0.100	0.125	0.150	0.200	0.250	0.300	0.375	0.500	0.625	0.750	1.000	
Level 1 Performance			Max RPM L1 = 312			Max Motor Frame Size = 145T						Outlet Area (ft²) = 16.126						
L1 Fabricated Steel	---	1	244 253 261	0.90 1.00 1.10	10.4 11.1 11.8	22382 23207 23941	17486 18621 19607	14899 16776 17975	12660 14680									
	---	1½	280 290 299	1.35 1.50 1.65	13.2 14.1 14.5	25684 26601 27427	21944 23162 24228	20462 21700 22800	18828 20253 21436	14047 16373								
Level 2 Performance			Max RPM L2 = 467			Max Motor Frame Size = 184T						Outlet Area (ft²) = 16.126						
L2 Fabricated Steel	---	1½	280 290 299	1.35 1.50 1.65	13.2 14.1 14.5	25684 26601 27427	21944 23162 24228	20462 21700 22800	18828 20253 21436	14047 16373								
	---	2	308 319 329	1.80 2.00 2.20	15.4 16.1 17	28252 29261 30178	25254 26471 27544	23911 25264 26464	22574 23933 25156	18675 21049 22575	14266 16967							
	---	3	352 365 377	2.70 3.00 3.30	19.1 20 22	32288 33481 34581	29930 31242 32441	29086 30494 31759	27985 29530 30905	25609 27224 28692	22682 24832 26497	16339 19756 22812						
	---	5	418 433 447	4.50 5.00 5.50	25 26 27	38342 39718 41002	36473 37929 39282	35921 37410 38789	35311 36848 38260	33693 35424 36987	31651 33496 35227	29688 31602 33339	24547 28144 30409					
Level 3 Performance			Max RPM B406 = 985 C3 = 985 C6 = 795 Z5 = 665			Max Motor Frame Size = 254T						Outlet Area (ft²) = 16.126						
B406 Cast Aluminum	20	1½	556	1.65	28	25609	23559	23003	22428	21235	20026	18811	16530					
	25		502	1.65	26	26815	24404	23728	23022	21542	19961	18007						
	30		455	1.64	23	27142	24236	23370	22436	20174	17169							
	20	2	612	2.20	32	28188	26346	25856	25350	24296	22106	20419	16704					
	25		553	2.21	30	29539	27387	26796	26181	24887	23530	22094	19405					
	30		501	2.19	28	29886	27314	26572	25783	24052	21839	19088						
	20	3	700	3.30	39	32241	30649	30233	29808	28927	28008	27061	25619	23145	19973			
	25		632	3.30	36	33759	31908	31412	30902	29831	28702	27527	25696	21817				
	30		573	3.28	33	34181	31995	31385	30748	29380	27878	26135	22716					
	20	5	830	5.51	51	38229	36900	36557	36210	35501	34769	34012	32837	30818	28813	26517		
	25		750	5.52	46	40062	38526	38124	37714	36867	35981	35058	33612	31091	28136	24464		
	30		679	5.45	44	40504	38704	38220	37719	36668	35546	34346	32389	28015				
20	7½	950	8.26	64	43756	42602	42307	42008	41402	40784	40151	39170	37463	35699	33935	30038		
25		858	8.26	59	45831	44500	44155	43806	43091	42353	41589	40395	38293	36096	33705	27437		
30		778	8.20	55	46410	44860	44452	44033	43164	42251	41292	39758	36928	33182				
20	10	1046	10.97	75	48177	47133	46867	46598	46055	45502	44940	44076	42575	41009	39406	36217		
25		944	10.99	69	50425	49221	48911	48598	47960	47306	46634	45590	43755	41820	39820	35204		
30		856	10.92	66	51063	49665	49300	48928	48162	47364	46532	45219	42838	40183	36709			
C3 Cast Aluminum	10	1½	662	1.65	18.4	24199	21481	20618										
	20		534	1.65	13.1	25564	22068	21132	20210									
	10	2	728	2.20	22	26612	24230	23499	22711	21090								
	20		588	2.20	15.6	28150	25021	24171	23321	21630								
	10	3	834	3.30	27	30487	28477	27908	27289	25930	24525	23046	20889					
	20		673	3.29	19.2	32219	29538	28814	28075	26589	25121	23511	20434					
	10	5	985	5.40	35	36007	34348	33900	33436	32429	31308	30126	28314	25220	22261			
	20		798	5.50	25	38203	35980	35396	34797	33563	32306	31065	29182	25256	20024			
	20	7½	914	8.25	31	43756	41832	41335	40829	39787	38711	37617	35979	33238	29898	25571		
25	856		8.25	33	42980	40697	40201	39719	38764	37773	36670	34820	31318	27150				
25	10	942	11.00	37	47299	45180	44714	44265	43391	42522	41620	40105	37208	33919	30109			

NOTES:

- Performance certified is for installation type A: Free inlet, free outlet.
- Power rating (BHP) does not include transmission losses.
- Performance ratings do not include the effects of appurtenances (accessories) in the airstream.
- The sound ratings shown are loudness values in fan sones at 5 ft. (1.5m) in a hemispherical free field calculated per AMCA Standard 301. Values are for installation Type A: Free inlet hemispherical sone levels.
- E4, E8 and B propellers are only available on model LUBMO. Model LUBSH must use steel propellers.
- LUBSH butterfly damper blades are constructed of steel and require a minimum outlet velocity of 1700 FPM to open fully. Not all selections above are valid for this model.

54 LUBMO/LUBSH (cont.)

MODEL INFO		MOTOR HP	FAN RPM	MAX BHP	SONES @ 0" SP	CFM/STATIC PRESSURE (IN. W.G.)													
PROPELLER	BLADE ANGLE					0.000	0.100	0.125	0.150	0.200	0.250	0.300	0.375	0.500	0.625	0.750	1.000		
Level 3 Performance		Max RPM C3 = 985 C6 = 795 Z5 = 665		Max Motor Frame Size = 254T							Outlet Area (ft²) = 16.126								
C6 Cast Aluminum	10	1 1/2	533	1.65	15.6	22751	20422												
	20		438	1.65	12.0	25224	22586	21853	21097										
	25		404	1.65	10.9	24987	22018	21327	20591										
		10	2	587	2.20	18.0	25056	22855	22429	22012	21126	20021							
		20		482	2.20	14.7	27758	25398	24753	24086	22704	21263							
		25		445	2.20	13.2	27523	24768	24163	23534	22195	20725							
		10	3	672	3.30	23	28684	26659	26258	25880	25149	24386	23487	21883					
		20		552	3.30	18.2	31789	29760	29222	28665	27507	26302	25064	23082					
		25		509	3.29	16.6	31481	28987	28453	27926	26833	25664	24441	22054					
		10	5	795	5.46	31	33934	32146	31755	31398	30742	30121	29501	28493	26352	24151	22147		
		20		654	5.49	24	37663	35973	35534	35086	34163	33199	32202	30664	27961	24916			
		25		604	5.50	22	37356	35167	34690	34230	33337	32438	31479	29994	27076	22787			
	20	7 1/2	749	8.25	30	43134	41670	41292	40910	40132	39327	38496	37205	34971	32629	30073			
	25		691	8.24	27	42737	40780	40334	39910	39103	38322	37543	36318	34151	31695	28056			
	20		795	9.87	33	45783	44407	44054	43697	42971	42226	41458	40266	38194	36050	33778	28486		
Z5 Fabricated Steel	30	1 1/2	444	1.65	18.3	24634	22643	22157	21676	20669									
	45		341	1.65	16.5	27312	24142	23229	22096										
	30		489	2.20	22	27131	25323	24872	24431	23554	22617	21521							
		45	2	375	2.19	19.5	30035	27183	26422	25588	23342	20102							
		30		559	3.29	27	31014	29434	29038	28641	27868	27102	26308	24947	21972				
		45		430	3.30	25	34440	31974	31337	30685	29253	27371	24817						
		30	5	663	5.50	34	36784	35453	35120	34786	34117	33458	32813	31839	30039	27805	24729		
		45		510	5.51	32	40848	38791	38257	37723	36639	35489	34177	31535					
		40		622	8.25	39	46350	44841	44448	44050	43232	42387	41512	40124	37478	34144	29765		
		45	7 1/2	584	8.27	40	46775	44993	44533	44068	43135	42191	41211	39587	35804				
		45		643	11.04	47	51500	49889	49476	49058	48212	47364	46507	45166	42537	38767	33709		

NOTES:

1. Performance certified is for installation type A: Free inlet, free outlet.
2. Power rating (BHP) does not include transmission losses.
3. Performance ratings do not include the effects of appurtenances (accessories) in the airstream.
4. The sound ratings shown are loudness values in fan sones at 5 ft. (1.5m) in a hemispherical free field calculated per AMCA Standard 301. Values are for installation Type A: Free inlet hemispherical sone levels.
5. E4, E8 and B propellers are only available on model LUBMO. Model LUBSH must use steel propellers.
6. LUBSH butterfly damper blades are constructed of steel and require a minimum outlet velocity of 1700 FPM to open fully. Not all selections above are valid for this model.



Belt Driven, LUBMO/LUBSH

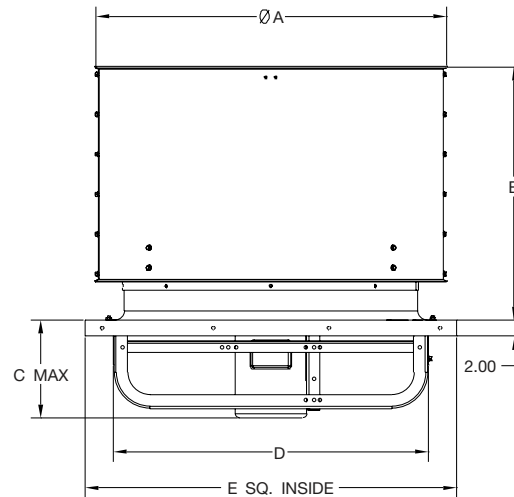
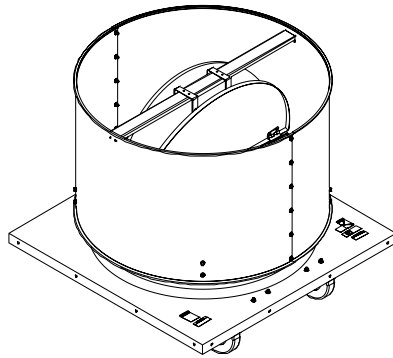
60 LUBMO/LUBSH

MODEL INFO		MOTOR HP	FAN RPM	MAX BHP	SONES @ 0" SP	CFM/STATIC PRESSURE (IN. W.G.)													
PROPELLER	BLADE ANGLE					0.000	0.100	0.125	0.150	0.200	0.250	0.300	0.375	0.500	0.625	0.750	1.000		
Level 1 Performance		Max RPM L1 = 300				Max Motor Frame Size = 145T													
L1 Fabricated Steel	---	1	205	0.90	9.5	25824	18870	13264											
			212	1.00	10.1	26706	20256	15794											
			219	1.10	10.8	27587	21528	18272											
	---	1 1/2	235	1.35	12.1	29603	24275	22263	18233										
			243	1.50	12.9	30611	25626	23740	21082										
			251	1.65	13.4	31618	26988	25143	23095										
---	2	258	1.80	14.2	32500	28167	26340	24498	16280										
		268	2.00	15.1	33760	29800	28026	26327	19923										
		276	2.20	15.9	34768	31062	29386	27722	22728										
Level 2 Performance		Max RPM L2 = 399				Max Motor Frame Size = 215T													
L2 Fabricated Steel	---	1 1/2	235	1.35	12.1	29603	24275	22263	18233										
			243	1.50	12.9	30611	25626	23740	21082										
			251	1.65	13.4	31618	26988	25143	23095										
	---	2	258	1.80	14.2	32500	28167	26340	24498	16280									
			268	2.00	15.1	33760	29800	28026	26327	19923									
			276	2.20	15.9	34768	31058	29386	27722	22728									
	---	3	296	2.70	17.5	37287	34051	32732	31111	27919	20998								
			306	3.00	18.6	38547	35488	34323	32814	29782	24441								
			316	3.30	19.4	39806	36896	35859	34500	31545	27890	19945							
	---	5	350	4.50	23	44089	41564	40789	39859	37322	34695	31544	21020						
			363	5.00	24	45727	43319	42598	41773	39522	36933	34286	25888						
			375	5.50	26	47239	44929	44248	43500	41503	38959	36517	30017						
Level 3 Performance		Max RPM C3 = 955 C6 = 850 Z5 = 685				Max Motor Frame Size = 256T													
C3 Cast Aluminum	10	2	681	2.20	23	29318	26209	25188											
			20	536	2.20	19.0	31588	27905	26864	25743									
			25	493	2.20	16.6	31187	26354	24998										
	10	3	779	3.30	29	33537	30961	30179	29304	27565	26075	24596							
			20	614	3.31	23	36185	33040	32185	31292	29359	27157							
			25	564	3.30	21	35679	31503	30418	29258	26544								
	10	5	924	5.50	37	39779	37677	37100	36491	35092	33579	32211	30360	26852					
			20	728	5.51	31	42903	40301	39612	38907	37435	35862	34140	31270	25537				
			25	669	5.50	26	42321	38750	37907	37040	35144	33060							
	10	7 1/2	955	6.07	39	41113	39090	38538	37963	36661	35199	33808	31983	28809	25116				
			20	833	8.26	39	49091	46842	46255	45657	44428	43147	41801	39619	35465	30721			
			25	766	8.26	33	48457	45286	44548	43814	42306	40656	38905	35727					
20	10	917	11.02	45	54042	52011	51485	50951	49859	48734	47568	45728	42305	38433	34112				
		25	843	11.00	39	53328	50415	49733	49063	47726	46337	44829	42425						
C6 Cast Aluminum	10	2	549	2.21	23	28162	25612	24957											
			20	439	2.20	18.1	31025	27889	27141	26357									
			25	401	2.20	16.2	31749	28322	27157	26045									
	10	3	628	3.30	28	32214	29995	29431	28860	27709	26562								
			20	503	3.30	24	35548	32774	32118	31468	30111	28475	26526						
			25	460	3.31	21	36420	33624	32742	31749	29782	28031	26138						
	10	5	744	5.49	39	38165	36297	35826	35352	34395	33425	32452	31009	28701	25964				
			20	596	5.50	31	42120	39763	39182	38619	37519	36404	35198	32964	29140	25198			
			25	545	5.51	29	43150	40880	40247	39566	37979	36260	34707	32486	27865				
	10	7 1/2	850	8.19	49	43602	41971	41560	41147	40319	39481	38635	37358	35255	33245	31045	25304		
			20	682	8.24	38	48198	46134	45622	45112	44121	43161	42197	40670	37460	34053	31017		
			25	623	8.23	35	49326	47380	46853	46307	45127	43750	42244	40119	36865	32921			
15	10	833	11.03	55	50289	48632	48220	47809	46990	46181	45390	44216	42208	39967	37519	32920			
		20	751	11.00	47	53074	51197	50731	50267	49345	48454	47582	46267	43852	40753	37672			
		25	687	11.04	41	54393	52647	52183	51705	50705	49604	48351	46305	43206	40225	36627			
Z5 Fabricated Steel	30	1 1/2	398	1.65	17.2	28555	26030	25313	24554										
			45	303	1.66	15.3	31813	27509	26205	24694									
	30	2	438	2.20	20	31425	29168	28547	27894	26495	25007								
			45	333	2.20	17.7	34963	31113	30046	28849	25848								
	30	3	502	3.31	25	36016	34081	33564	33031	31901	30687	29406	27385						
			45	381	3.29	22	40002	36680	35808	34898	32846	30329							
	30	5	595	5.51	33	42689	41080	40659	40230	39345	38414	37430	35866	33092	29740				
			45	452	5.50	29	47457	44686	43970	43246	41750	40114	38254	34689					
	40	7 1/2	553	8.25	36	53586	51469	50930	50388	49310	48239	47146	45378	41612	36383				
			45	517	8.23	36	54281	51879	51258	50632	49369	48067	46685	44348	39130				
	35	10	672	11.00	45	56418	54997	54630	54257	53493	52705	51889	50597	48249	45672	42786	35563		
			40	609	11.02	43	59012	57095	56609	56119	55134	54159	53187	51693	48878	45215	40435		
45			570	11.03	42	59846	57678	57121	56557	55421	54270	53088	51198	47507	42082				

NOTES:

1. Performance certified is for installation type A: Free inlet, free outlet.
2. Power rating (BHP) does not include transmission losses.
3. Performance ratings do not include the effects of appurtenances (accessories) in the airstream.
4. The sound ratings shown are loudness values in fan sones at 5 ft. (1.5m) in a hemispherical free field calculated per AMCA Standard 301. Values are for installation Type A: Free inlet hemispherical sone levels.
5. E4, E8 and B propellers are only available on model LUBMO. Model LUBSH must use steel propellers.
6. LUBSH butterfly damper blades are constructed of steel and require a minimum outlet velocity of 1700 FPM to open fully. Not all selections above are valid for this model.

LUD

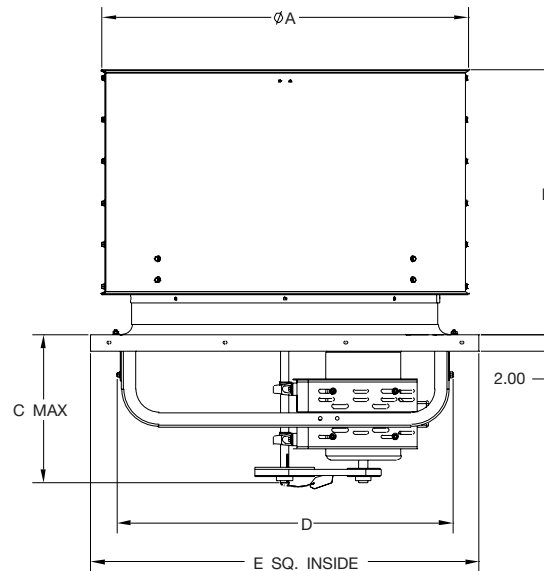
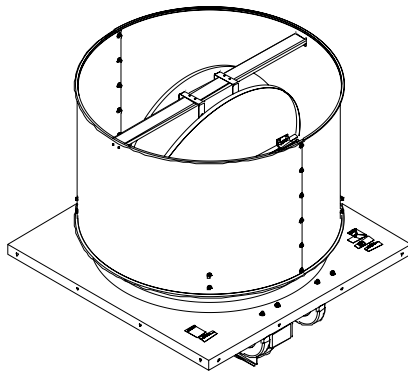


LUD Dimensions

SIZE	A	B	C MAX	D	E	CANTED CURB DIMENSIONS	SELF-FLASHING CURB DIMENSIONS
14	21.13	19.20	11.19	15.25	21.50	20 x 20	20.50 x 20.50
16	23.13	20.20	11.19	18.25	24.50	23 x 23	23.50 x 23.50
18	25.13	21.20	11.19	20.25	26.50	25 x 25	25.50 x 25.50
21	28.44	22.70	14.41	23.25	29.50	28 x 28	28.50 x 28.50
24	31.88	24.44	14.55	26.25	32.50	31 x 31	31.50 x 31.50
30	37.88	27.94	14.74	34.25	40.50	39 x 39	39.50 x 39.50
36	43.88	31.94	15.67	40.25	46.50	45 x 45	45.50 x 45.50
42	49.88	34.92	23.59	45.00	52.50	51 x 51	51.50 x 51.50
48	55.88	37.92	23.59	51.00	58.50	57 x 57	57.50 x 57.50

D-4870-4

LUB



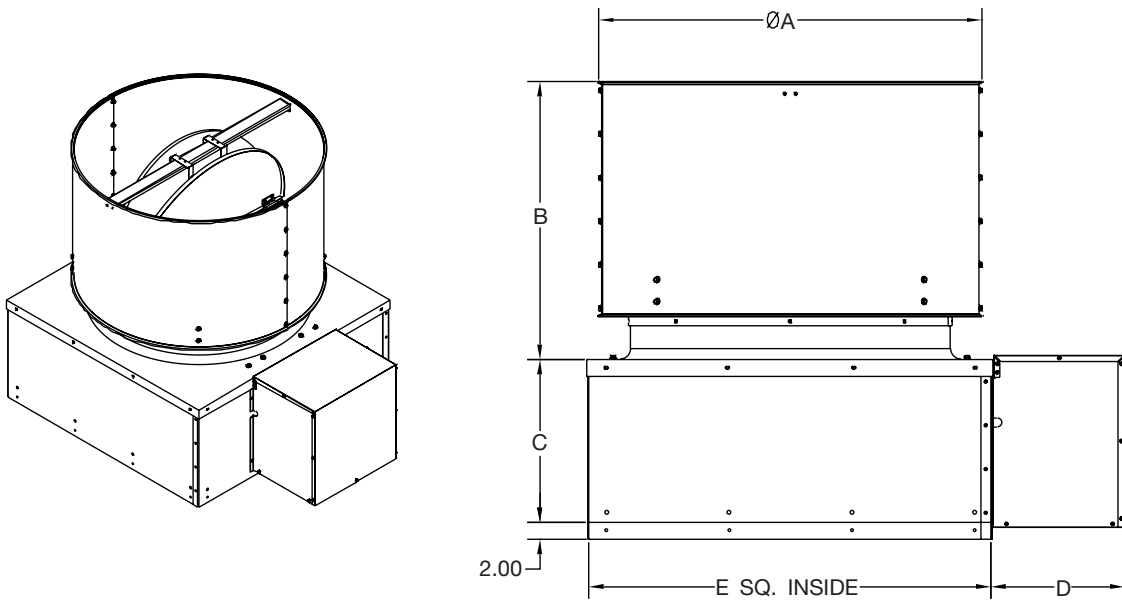
LUB Dimensions

SIZE	A	B	C MAX			D	E	CANTED CURB DIMENSIONS	SELF-FLASHING CURB DIMENSIONS
			L 1	L 2	L 3				
21	28.44	22.70	15.88	15.88	17.25	23.30	29.50	28 x 28	28.50 x 28.50
24	31.88	24.44	16.19	16.19	17.25	26.30	32.50	31 x 31	31.50 x 31.50
30	37.88	27.94	17.81	19.31	18.31	34.30	40.50	39 x 39	39.50 x 39.50
36	43.88	31.94	17.50	19.13	18.31	40.30	46.50	45 x 45	45.50 x 45.50
42	49.88	34.92	17.88	19.38	21.31	45.55	52.50	51 x 51	51.50 x 51.50
48	55.88	37.92	18.75	20.13	21.31	51.55	58.50	57 x 57	57.50 x 57.50
54	61.88	40.92	18.88	20.50	26.13	56.88	64.50	63 x 63	63.50 x 63.50
60	67.88	43.92	19.50	24.75	26.13	56.88	70.50	69 x 69	69.50 x 69.50

D-4870-1

NOTE:
1. Dimensions are not to be used for construction.

LUBMO/LUBSH



LUBMO/LUBSH Dimensions

SIZE	A	B	C	D	E	CANTED CURB DIMENSIONS	SELF-FLASHING CURB DIMENSIONS
21	28.44	22.70	17.50	13.25	29.25	28 x 28	28.50 x 28.50
24	31.88	24.44	17.50	13.25	32.25	31 x 31	31.50 x 31.50
30	37.88	27.94	18.50	15.25	40.25	39 x 39	39.50 x 39.50
36	43.88	31.94	18.50	15.25	46.25	45 x 45	45.50 x 45.50
42	49.88	34.92	21.50	17.50	52.25	51 x 51	51.50 x 51.50
48	55.88	37.92	21.50	17.50	58.25	57 x 57	57.50 x 57.50
54	61.88	40.92	22.75	19.00	64.25	63 x 63	63.50 x 63.50
60	67.88	43.92	22.75	19.00	70.25	69 x 69	69.50 x 69.50

D-4870-2
D-4870-3A

NOTES:

1. Dimensions are not to be used for construction.
2. Model LUBSH is only available with 12" or 18", vented, galvanized, self-flashing roof curbs.





Model LUB

Low Profile Upblast Propeller Roof Ventilators, shall be Model LUB (standard belt driven) as manufactured by Twin City Fan & Blower, Minneapolis, Minnesota.

PERFORMANCE — Fans shall be tested in accordance with AMCA test codes for air moving devices and shall be guaranteed by the manufacturer to deliver rated published performance levels. Model LUB shall be UL/cUL 705 listed for electrical.

CONSTRUCTION — Fan curb caps shall be constructed of heavy gauge galvanized steel or painted steel for durability and appearance. Curb caps shall have a deep formed inlet venturi for efficient airflow and pre-punched holes for easy mounting to the roof curb. Discharge cap with butterfly dampers shall contain a rain channel to protect against rain entry. Butterfly damper blades constructed of steel as standard, unless the outlet velocity of the fan is below the minimum required to open steel damper blades, then aluminum blades shall be provided. Discharge caps and motor mount assemblies shall be constructed of heavy gauge galvanized steel.

PROPELLERS — Propellers shall be constructed of fabricated steel or cast aluminum blades and hubs. Propellers on direct drive units shall be secured to the motor shaft with a taperlock bushing. Propellers on belt driven units shall be welded to the fan shaft or secured to the fan shaft with a taperlock bushing.

SHAFTS — Shafts shall be AISI 1045 cold rolled steel, accurately turned, ground, polished, and ring gauged for accuracy. Shafts shall be sized for the first critical speed of at least 1.43 times the maximum speed.

BEARINGS — Bearings are to be pillow block, heavy-duty, anti-friction, self-aligning, grease lubricated, ball type. Each fan's bearings are sized with a minimum average life, per AFBMA, in excess of 200,000 hours when operating at the maximum RPM of the fan size.

DRIVES — Motor sheaves shall be cast iron, and supplied as variable pitch standard. Drives and belts shall be rated for a minimum of 150% of the required motor HP.

MOTORS — All motors shall be single phase or three phase induction, permanently lubricated, heavy-duty, ball bearing type, closely matched to the fan load and provided at the voltage, phase, hertz and enclosure as provided on the fan schedule.

FINISH AND COATING — Fans shall have galvanized steel or finish painted curb caps, motor supports and windbands.

ACCESSORIES — When specified, accessories such as inlet safety guards, fusible link assemblies, magnetic damper latches, hinged bases, extended lube lines, roof curbs and disconnect switches shall be provided by Twin City Fan to maintain one source responsibility.

FACTORY RUN TEST — All fans prior to shipment shall be completely assembled and test run as a unit at operating speed or maximum RPM allowed for the particular construction type. Each propeller shall be statically and dynamically balanced in accordance with ANSI/AMCA 204-96 "Balance Quality and Vibration Levels for Fans" to Fan Application Category BV-3, Balance Quality Grade G6.3. Balance readings shall be taken by electronic type equipment in the axial, vertical, and horizontal directions. Records shall be maintained and a written copy shall be available upon request.

GUARANTEE — The manufacturer shall guarantee the workmanship and materials for its Model LUB for at least one (1) year from startup or eighteen (18) months from shipment, whichever occurs first.



Model LUD

Low Profile Upblast Propeller Roof Ventilators, shall be Model LUD (standard direct drive) as manufactured by Twin City Fan & Blower, Minneapolis, Minnesota.

PERFORMANCE — Fans shall be tested in accordance with AMCA test codes for air moving devices and shall be guaranteed by the manufacturer to deliver rated published performance levels. Model LUD shall be UL/cUL 705 listed for electrical.

CONSTRUCTION — Fan curb caps shall be constructed of heavy gauge galvanized steel or painted steel for durability and appearance. Curb caps shall have a deep formed inlet venturi for efficient airflow and pre-punched holes for easy mounting to the roof curb. Discharge cap with butterfly dampers shall contain a rain channel to protect against rain entry. Butterfly damper blades constructed of steel as standard, unless the outlet velocity of the fan is below the minimum required to open steel damper blades, then aluminum blades shall be provided. Discharge caps and motor mount assemblies shall be constructed of heavy gauge galvanized steel.

PROPELLERS — Propellers shall be constructed of fabricated steel or cast aluminum blades and hubs. Propellers on direct drive units shall be secured to the motor shaft with a taperlock bushing. Propellers on belt driven units shall be welded to the fan shaft or secured to the fan shaft with a taperlock bushing.

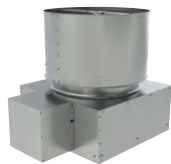
MOTORS — All motors shall be single phase or three phase induction, permanently lubricated, heavy-duty, ball bearing type, closely matched to the fan load and provided at the voltage, phase, hertz and enclosure as provided on the fan schedule.

FINISH AND COATING — Fans shall have galvanized steel or finish painted curb caps, motor supports and windbands.

ACCESSORIES — When specified, accessories such as inlet safety guards, fusible link assemblies, magnetic damper latches, hinged bases, extended lube lines, roof curbs and disconnect switches shall be provided by Twin City Fan to maintain one source responsibility.

FACTORY RUN TEST — All fans prior to shipment shall be completely assembled and test run as a unit at operating speed or maximum RPM allowed for the particular construction type. Each propeller shall be statically and dynamically balanced in accordance with ANSI/AMCA 204-96 "Balance Quality and Vibration Levels for Fans" to Fan Application Category BV-3, Balance Quality Grade G6.3. Balance readings shall be taken by electronic type equipment in the axial, vertical, and horizontal directions. Records shall be maintained and a written copy shall be available upon request.

GUARANTEE — The manufacturer shall guarantee the workmanship and materials for its Model LUD for at least one (1) year from startup or eighteen (18) months from shipment, whichever occurs first.



Model LUBMO

Low Profile Upblast Propeller Roof Ventilators, shall be Model LUBMO (belt driven with motor out of the airstream) as manufactured by Twin City Fan & Blower, Minneapolis, Minnesota.

PERFORMANCE — Fans shall be tested in accordance with AMCA test codes for air moving devices and shall be guaranteed by the manufacturer to deliver rated published performance levels. Model LUBMO shall be UL/cUL 705 listed for electrical.

CONSTRUCTION — Fan curb caps shall be constructed of heavy gauge galvanized steel or painted steel for durability and appearance. Curb caps shall have a deep formed inlet venturi for efficient airflow and pre-punched holes for easy mounting to the roof curb. Discharge cap with butterfly dampers shall contain a rain channel to protect against rain entry. Butterfly damper blades constructed of steel as standard, unless the outlet velocity of the fan is below the minimum required to open steel damper blades, then aluminum blades shall be provided. Discharge caps and motor mount assemblies shall be constructed of heavy gauge galvanized steel.

PROPELLERS — Propellers shall be constructed of fabricated steel or cast aluminum blades and hubs. Propellers on direct drive units shall be secured to the motor shaft with a taperlock bushing. Propellers on belt driven units shall be welded to the fan shaft or secured to the fan shaft with a taperlock bushing.

SHAFTS — Shafts shall be AISI 1045 cold rolled steel, accurately turned, ground, polished, and ring gauged for accuracy. Shafts shall be sized for the first critical speed of at least 1.43 times the maximum speed.

BEARINGS — Bearings are to be pillow block, heavy-duty, anti-friction, self-aligning, grease lubricated, ball type. Each fan's bearings are sized with a minimum average life, per AFBMA, in excess of 200,000 hours when operating at the maximum RPM of the fan size.

DRIVES — Motor sheaves shall be cast iron, and supplied as variable pitch standard. Drives and belts shall be rated for a minimum of 150% of the required motor HP.

MOTORS — All motors shall be single phase or three phase induction, permanently lubricated, heavy-duty, ball bearing type, closely matched to the fan load and provided at the voltage, phase, hertz and enclosure as provided on the fan schedule.

FINISH AND COATING — Fans shall have galvanized steel or finish painted curb caps, motor supports and windbands.

ACCESSORIES — When specified, accessories such as inlet safety guards, fusible link assemblies, magnetic damper latches, hinged bases, extended lube lines, roof curbs and disconnect switches shall be provided by Twin City Fan to maintain one source responsibility.

FACTORY RUN TEST — All fans prior to shipment shall be completely assembled and test run as a unit at operating speed or maximum RPM allowed for the particular construction type. Each propeller shall be statically and dynamically balanced in accordance with ANSI/AMCA 204-96 "Balance Quality and Vibration Levels for Fans" to Fan Application Category BV-3, Balance Quality Grade G6.3. Balance readings shall be taken by electronic type equipment in the axial, vertical, and horizontal directions. Records shall be maintained and a written copy shall be available upon request.

GUARANTEE — The manufacturer shall guarantee the workmanship and materials for its Model LUBMO for at least one (1) year from startup or eighteen (18) months from shipment, whichever occurs first.



Model LUBSH

Low Profile Upblast Propeller Roof Ventilators, shall be Model LUBSH (smoke and heat) as manufactured by Twin City Fan & Blower, Minneapolis, Minnesota.

PERFORMANCE — Fans shall be tested in accordance with AMCA test codes for air moving devices and shall be guaranteed by the manufacturer to deliver rated published performance levels. Model LUBSH shall be UL/cUL listed for Smoke Control Systems (500°F for 4 hours and 1000°F for 1 hour).

CONSTRUCTION — Fan curb caps shall be constructed of heavy gauge galvanized steel or painted steel for durability and appearance. Curb caps shall have a deep formed inlet venturi for efficient airflow and pre-punched holes for easy mounting to the roof curb. Discharge cap with butterfly dampers shall contain a rain channel to protect against rain entry. Butterfly damper blades constructed of steel as standard, unless the outlet velocity of the fan is below the minimum required to open steel damper blades, then aluminum blades shall be provided. Discharge caps and motor mount assemblies shall be constructed of heavy gauge galvanized steel.

PROPELLERS — Propellers shall be constructed of fabricated steel or cast aluminum blades and hubs. Propellers on direct drive units shall be secured to the motor shaft with a taperlock bushing. Propellers on belt driven units shall be welded to the fan shaft or secured to the fan shaft with a taperlock bushing.

SHAFTS — Shafts shall be AISI 1045 cold rolled steel, accurately turned, ground, polished, and ring gauged for accuracy. Shafts shall be sized for the first critical speed of at least 1.43 times the maximum speed.

BEARINGS — Bearings are to be pillow block, heavy-duty, anti-friction, self-aligning, grease lubricated, ball type. Each fan's bearings are sized with a minimum average life, per AFBMA, in excess of 200,000 hours when operating at the maximum RPM of the fan size.

DRIVES — Motor sheaves shall be cast iron, and supplied as variable pitch standard. Drives on model LUBSH shall be rated for a minimum of 200% of the required motor HP and shall be two-groove minimum.

MOTORS — All motors shall be single phase or three phase induction, permanently lubricated, heavy-duty, ball bearing type, closely matched to the fan load and provided at the voltage, phase, hertz and enclosure as provided on the fan schedule.

FINISH AND COATING — Fans shall have galvanized steel or finish painted curb caps, motor supports and windbands.

ACCESSORIES — When specified, accessories such as inlet safety guards, fusible link assemblies, magnetic damper latches, hinged bases, extended lube lines, roof curbs and disconnect switches shall be provided by Twin City Fan to maintain one source responsibility.

FACTORY RUN TEST — All fans prior to shipment shall be completely assembled and test run as a unit at operating speed or maximum RPM allowed for the particular construction type. Each propeller shall be statically and dynamically balanced in accordance with ANSI/AMCA 204-96 "Balance Quality and Vibration Levels for Fans" to Fan Application Category BV-3, Balance Quality Grade G6.3. Balance readings shall be taken by electronic type equipment in the axial, vertical, and horizontal directions. Records shall be maintained and a written copy shall be available upon request.

GUARANTEE — The manufacturer shall guarantee the workmanship and materials for its Model LUBSH for at least one (1) year from startup or eighteen (18) months from shipment, whichever occurs first.

INDUSTRIAL PROCESS AND COMMERCIAL VENTILATION SYSTEMS

CENTRIFUGAL FANS | UTILITY SETS | PLENUM & PLUG FANS | INLINE CENTRIFUGAL FANS
MIXED FLOW FANS | TUBEAXIAL & VANEAXIAL FANS | PROPELLER WALL FANS | PROPELLER ROOF VENTILATORS
CENTRIFUGAL ROOF & WALL EXHAUSTERS | CEILING VENTILATORS | GRAVITY VENTILATORS | DUCT BLOWERS
RADIAL BLADED FANS | RADIAL TIP FANS | HIGH EFFICIENCY INDUSTRIAL FANS | PRESSURE BLOWERS
LABORATORY EXHAUST FANS | FILTERED SUPPLY FANS | MANCOOLERS | FIBERGLASS FANS | CUSTOM FANS



TWIN CITY FAN & BLOWER
WWW.TCF.COM

5959 TRENTON LANE N | MINNEAPOLIS, MN 55442 | PHONE: 763-551-7600 | FAX: 763-551-7601

©2018 Twin City Fan Companies, Ltd., Minneapolis, MN. All rights reserved. Catalog illustrations cover the general appearance of Twin City Fan & Blower products at the time of publication and we reserve the right to make changes in design and construction at any time without notice.